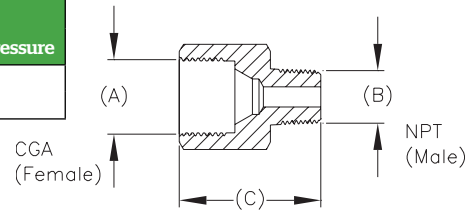


Brass Adapters CGA x Misc.

Ordering Information

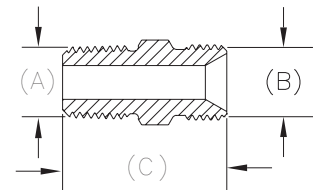
Part Number	A		B		C (Ref.)		Maximum Operating Pressure
	Inches	mm	Inches	mm	Inches	mm	
1877C	.580	15	½"	13	1¼"	44	3000 psig (206 barg)
1877D			¾"	19			



Brass Adapters Male x Male

Ordering Information

Part Number	A (Male)		B (Male)		C (Ref.)		Maximum Operating Pressure
	Inches	mm	Inches	mm	Inches	mm	
1300	¼ NPT	6	9/16" - 18NF-LH	14-457	1¼"	32	3000 psig (206 barg)
1200					2¾"	60	
2233-4HAL	½ NPT	13	1" - 11½NPS-LH	25-292	2¾"	60	
2233-4HA					2¾"	60	
2233-4HL	¾ NPT	19	1" - 11½NPS-LH	25-292	2¾"	65	
2233-4H					2¾"	65	

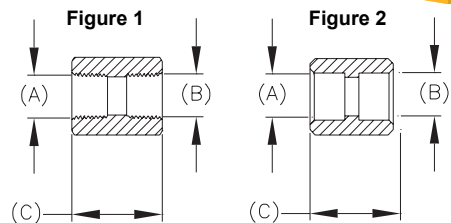


Brass Adapters Female x Female

Ordering Information

Part Number	Figure	A (Female)		B (Female)		C (Ref.)		Maximum Operating Pressure
		Inches	mm	Inches	mm	Inches	mm	
1125-15	1	½" NPT	13	½" NPT	13	15/8"	46	3000 psig (206 barg)
1044		¾" NPT	19	¾" NPT	19	2"	51	

Part Number	Figure	A (Female)		B (Female)		C (Ref.)		Maximum Operating Pressure
		Inches	mm	Inches	mm	Inches	mm	
1125-16	2	.843-.847	21-22	.843-.847	21-22	15/8"	46	3000 psig (206 barg)
1044-1		1.053-1.057	27	1.053-1.057	27	2"	51	



Brass Adapters Male x Female

Ordering Information

Part Number	Figure	A (Male)		B (Female)		C (Ref.)		Maximum Operating Pressure
		Inches	mm	Inches	mm	Inches	mm	
489-10	1	½" NPT	13	¼" NPT	6	1¼"	38	3000 psig (206 barg)
1252				½" NPT	13	119/64"	33	
1252A		¾" NPT	19	¾" NPT	19	127/32"	47	
2165-3	2	1"-11½NPS-RH	25-292	.843-.847	21-22	13/16"	30	
2165-3B				1.053-1.057	27	127/32"	47	
2165-3A				1.053-1.057	27	127/32"	47	

