

Brass High Pressure ASME Relief Valves PRV19534K Series

Application

The RegO PRV19534 Series relief valves are designed for CO2 and other industrial gases and for cryogenic service in the vapor space. Apply on piping systems, liquid cylinders or mini-bulk cryogenic containers where an ASME relief valve is required. Compatible with all oxygen, nitrogen, argon, helium, LNG and CO2.



Features

- All valves are cleaned and packaged for oxygen service per CGA G-4.1
- Bubble tight at 95% of set pressure
- Full flow at 110% of set pressure
- Temperature range -320°F to +165°F (-196°C to +74°C)
- Rated for gas service only, not liquid
- Setpoint tolerance +/- 3%
- Available in brass with settings from 800 to 1,000 psig
- Builds off proven experience of and further extends PRV9400 series offerings
- ASME rated National Board Certified
- Easy to read color coded psig / bar labels
- Tamper resistant
- Adapters provide standard pipe thread connections for venting gas to the outdoors (B-9412-4, sold separately)
- Repeatable performance
- 100% factory tested
- In liquid service be sure to use with a candy cane riser (sold separately)
- In liquid service be sure to use with a candy cane riser (Sold Separately)

Flow Performance

For set pressures 800-1000 psig, capacity is 0.805 SCFM of air per PSIA of flow pressure. Flow pressure per ASME is 10% above set pressure or +3 PSIG, whichever is greater.

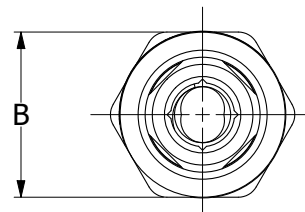
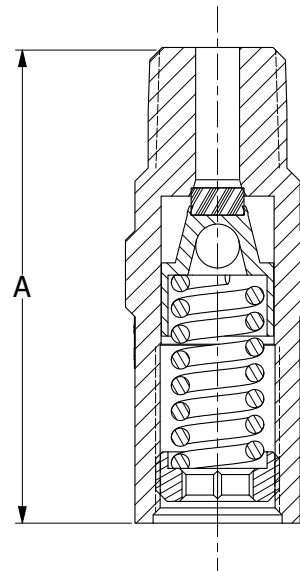
Materials

Body Brass ASTM B16 UNS C36000
 Spring Stainless Steel ASTM A313
 Seat Retainer..... Brass ASTM B16 UNS C36000
 Seat PCTFE (Kel -F)
 Pipe-Away Adapter Brass ASTM B16 UNS C36000

The use of a candy cane riser is recommended for liquid phase installation of these PRVs.



PRV19534K Series



Ordering Information

Part Number	Material	Pressure Setting Range psig (barg)	Inlet M.NPT	"A" Inches (mm)	"B" Inches (mm)	Orifice Size Inch ² (mm ²)	Kd Value	Pipe-Away Adapter P/N
PRV19534K	Brass	800- 1000 (55.1 - 68.9)	½"	2.9 (73.1)	1.0 (25.4)	0.266 (171.6)	0.79	B-9412-4

Pressure Setting and Flow Data

PRV19534K Series

Pressure Setting PSIG	Pressure Setting BARG	Air Flow Capacity SCFM	Pressure Setting PSIG	Pressure Setting BARG	Air Flow Capacity SCFM
800	551.6	720	900	620.5	809
805	555	725	905	624	813
810	558.5	729	910	627.4	818
815	561.9	734	915	630.9	822
820	565.4	738	920	634.3	826
825	568.8	742	925	637.8	831
830	572.3	747	930	641.2	835
835	575.7	751	935	644.7	840
840	579.2	756	940	648.1	844
845	582.6	760	945	651.6	849
850	586.1	765	950	655	853
855	589.5	769	955	658.5	857
860	593	773	960	661.9	862
865	596.4	778	965	665.3	866
870	599.8	782	970	668.8	871
875	603.3	787	975	672.2	875
880	606.7	791	980	675.7	880
885	610.2	796	985	679.1	884
890	613.6	800	990	682.6	888
895	617.1	804	995	686	893
			1000	689.5	897

Setpoint tolerance is $\pm 3\%$ of the set pressure or ± 2 psig whichever is greater.

WARNING: Inspection and maintenance of pressure relief valves is very important. Failure to properly inspect and maintain pressure relief valves could result in personal injuries or property damage. The useful safe service life of a pressure relief valve may be significantly affected by the service environment.

ASME Ordering Information

