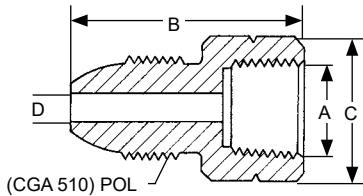
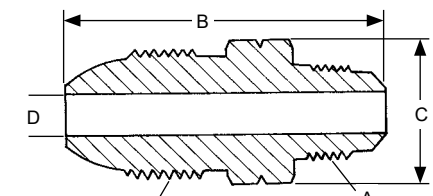


POL Adapters



(CGA 510) POL
Male POL x Female NPT



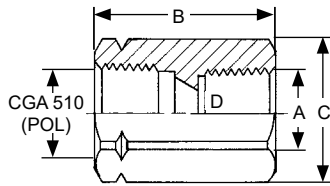
(CGA 510) POL
Male POL x Male NPT and SAE Flare

Ordering Information

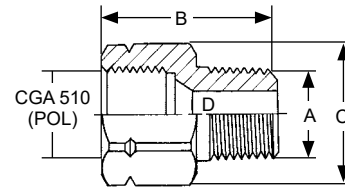
Part Number	Material	A F.NPT	B	C Hex	D Diameter
2906A	Brass	1/4"	1 1/2"	7/8"	3/32"
2906G		1/2"	2"	1 1/8"	
2906D		3/8"	M. NPT	2 5/64"	

Ordering Information

Part Number	Material	A	B	C Hex	D Diameter
2906D	Brass	3/8"	2 5/64"	7/8"	3/32"
2906F		3/8"	2 3/32"		
2906E		1/2"	2 9/32"		



Female POL x Female NPT and Female POL



Female POL x Male NPT

Ordering Information

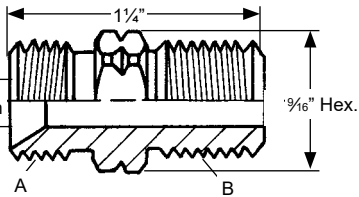
Part Number	Material	A	B	C Hex	D Diameter
5760A	Brass	1/4" F.NPT	1 5/8"	1 1/8"	13/32"
5760B		3/8" F.NPT			
5760C		1/2" F.NPT			
5760D		3/4" F.NPT	1 7/8"	1 3/8"	13/32"
5760S		POL (CGA 510)	2 1/8"	1 1/8"	

Ordering Information

Part Number	Material	A	B	C Hex	D Diameter
5761A	Brass	1/4" M.NPT	1 5/8"	1 1/8"	3/16"
5761B		3/8" M.NPT			13/32"
5761C		1/2" M.NPT			7/16"
5761D		3/4" M.NPT			7/16"

H

Hose Adapter
For use with fuel gases (LP-Gas, Acetylene).

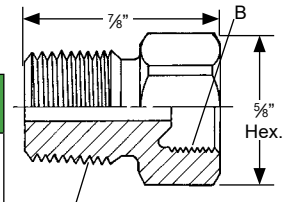


Ordering Information

Part Number	Material	A	B
1300	Brass	9/16"-18UNF (L.H.)	1/4" M. NPT

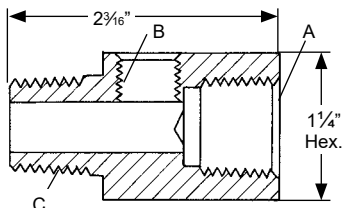
Ordering Information

Part Number	Material	A	B
15774-1	Brass	1/4" M. NPT	1/4" Female Inverted Flare



Female Inverted Flare x Male NPT

Pressure Gauge Adapter



Ordering Information

Part Number	Material	A	B	C
1494-1	Brass	1/2" F. NPT	1/4" F. NPT	1/2" M. NPT

Ordering Information

Part Number	Material	A	B	C	D	E	F
1328	Brass	3/8" SAE Male Flare	3/8" SAE Female Flare	3/8" Hose Barb	13/16"	2"	1 1/8"
1331		1/2" SAE Male Flare	1/2" SAE Female Flare		1"	2 1/2"	1 1/4"
1332		5/8" SAE Male Flare	5/8" SAE Female Flare		1 1/8"	2 1/2"	

