

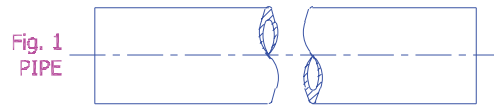
Brass Pipe & Pipe Nipples

Heavy-duty, yellow brass pipe and pipe nipples are designed with a high quality, seamless thick wall construction. They are suitable for use in most industrial piping applications.

ASTM B135 Alloy 330

For the 1/2" I.D. pipe, the O.D. is 0.840".

For the 3/4" I.D. pipe, the O.D. is 1.050".



Ordering Information

Part Number	Figure	Inside Diameter	Inlet / Outlet Connections (M.NPT)	Length	Maximum Operating Pressure (PSIG)*
TNE1050-14400	1	1/2"	Not Available	12 Feet	3600
TNE1075-14400		3/4"			
1050-15	2	1/2"	1/2"	1 1/2"	
1050-20				2"	
1050-40				4"	
1050-60				6"	
1050-80				8"	
1075-20				2"	
1075-30				3"	
1075-40				4"	
1075-50	5"				
1075-60	6"				
		3/4"	3/4"	2"	
				3"	
				4"	
				5"	
				6"	

Brass Elbows

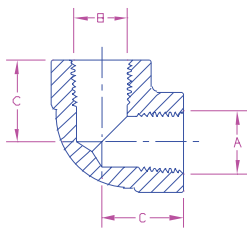


Fig. 1

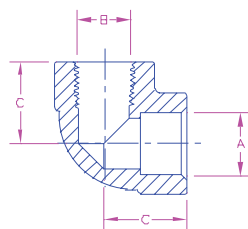


Fig. 2

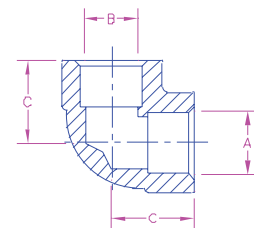


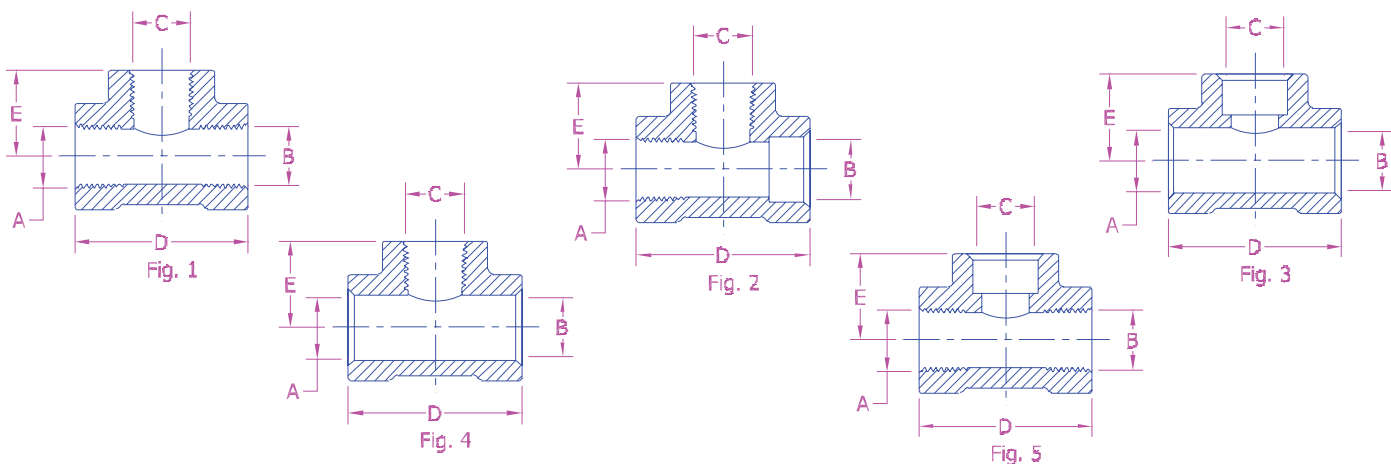
Fig. 3

Ordering Information

Part Number	Figure	A (Female)	B (Female)	C (Ref.)	Working Pressure PSIG*
1228-1	1	1/2" NPT	1/2" NPT	1 1/8"	3750
HP1228-1		1/2" NPT	1/2" NPT	1 1/2"	4500
1043		3/4" NPT	3/4" NPT	1 1/2"	4500
1228-2	2	1/2" NPT	.843-.847	1 1/8"	3750
HP1228-2		1/2" NPT	.843-.847	1 1/2"	4500
2223-2		3/4" NPT	1.053-1.057	1 1/2"	4500
1228-4	3	.843-.847	.843-.847	1 1/8"	3750
HP1228-4		.843-.847	.843-.847	1 1/2"	6000
2233-6		1.053-1.057	1.053-1.057	1 1/2"	4500

*Safety factor = 4:1

Brass Tees

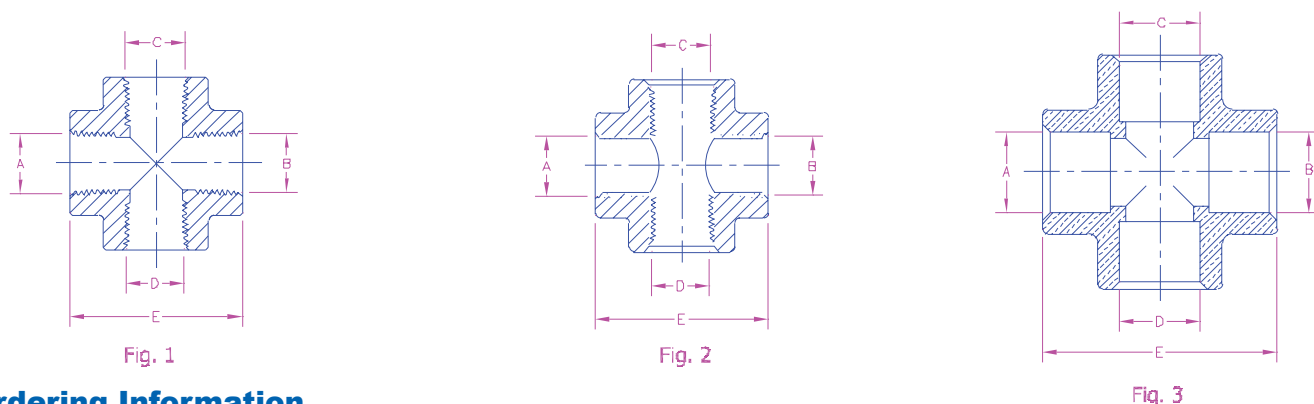


Ordering Information

Part Number	Figure	A (Female)	B (Female)	C (FEMALE)	D (Ref.)	e (Ref.)	Working Pressure PSIG*
1227-1	1	½" NPT	½" NPT	½" NPT	2¼"	1⅝"	3750
HP1227-1		¾" NPT	¾" NPT		¾" NPT	3"	1½"
1042-20				1042			
1227-3	2	½" NPT	.843-.847	½" NPT	2¼"	1⅝"	3750
HP1227-3		¾" NPT	1.053-1.057	¾" NPT	3"	1½"	4500
4608-5	3	.843-.847	.843-.847	.843-.847	2¼"	1⅝"	3750
HP1227-28		1.053-1.057	1.053-1.057	1.053-1.057	3"	1½"	6000
2118-2					4500		
1227-9	4	.843-.847	.843-.847	½" NPT	2¼"	1⅝"	3750
HP1227-9		1.053-1.057	1.053-1.057	¾" NPT	3"	1½"	4500
2223-3	HP1227-5	½" NPT	½" NPT	.843-.847			

*Safety factor = 4:1

Brass Crosses

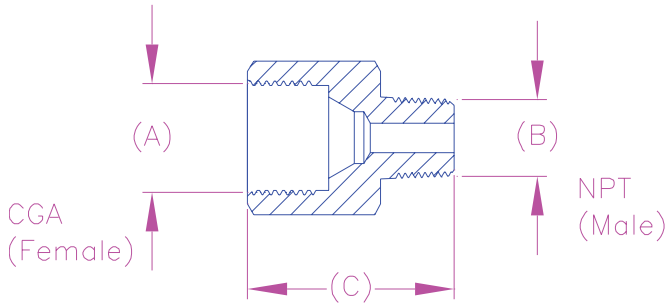


Ordering Information

Part Number	Figure	A (Female)	B (Female)	C (Female)	D (Female)	E (Ref.)	Working Pressure PSIG*
1225-1	1	½" NPT	½" NPT	½" NPT	½" NPT	2¼"	3750
HP1225-1		¾" NPT	¾" NPT	¾" NPT	¾" NPT	3"	4500
1045	4500						
1225-3	2	.843-.847	.843-.847	½" NPT	½" NPT	2¼"	3750
HP1225-3		1.053-1.057	1.053-1.057	¾" NPT	¾" NPT	3"	4500
2222-2	3	.843-.847	.843-.847	.843-.847	.843-.847	3"	6000
HP1225-4		1.053-1.057	1.053-1.057	1.053-1.057	1.053-1.057	3"	4500
2222-4							

*Safety factor = 4:1

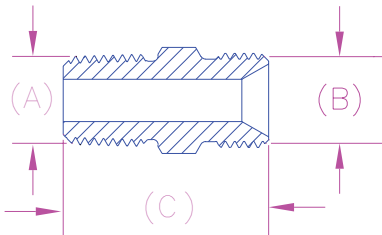
Brass Adapters CGA x Misc.



Ordering Information

Part Number	Figure	A	B	C (Ref.)
1877C	2	580	1/2"	1 3/4"
1877D			3/4"	

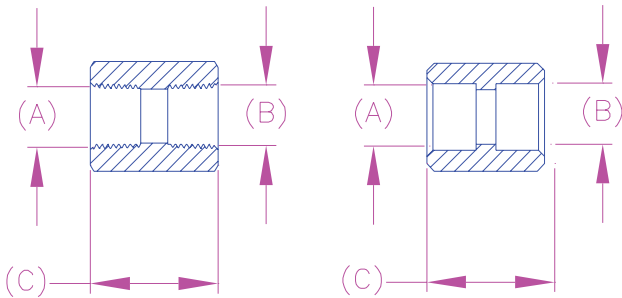
Brass Adapters Male x Male



Ordering Information

Part Number	Figure	A (Male)	B (Male)	C (Ref.)
1300	1	1/4 NPT	9/16" - 18NF-LH	1 3/16"
1200			9/16" - 18NF-RH	1 3/16"
2233-4HAL		1/2 NPT	1" - 11 1/2 NPS-LH	2 3/8"
2233-4HA			1" - 11 1/2 NPS-RH	2 3/8"
2233-4HL		3/4 NPT	1" - 11 1/2 NPS-LH	2 9/16"
2233-4H			1" - 11 1/2 NPS-RH	1 3/4"

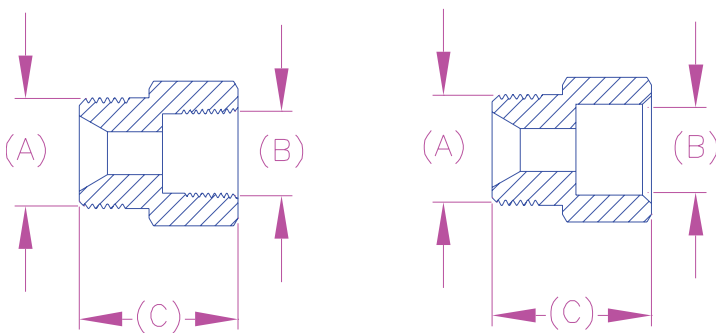
Brass Adapters Female x Female



Ordering Information

Part Number	Figure	A (Female)	B (Female)	C (Ref.)
1125-15	1	1/4" NPT	1/4" NPT	1 1/8"
1044		1/2" NPT	1/2" NPT	1 5/8"
1125-16	2	3/4" NPT	3/4" NPT	2"
1044-1		.843-.847	.843-.847	1 5/8"

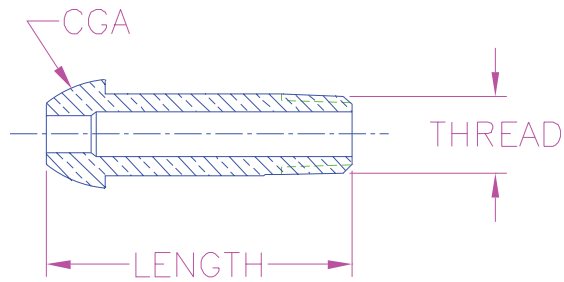
Brass Adapters Male x Female



Ordering Information

Part Number	Figure	A (Male)	B (Female)	C (Ref.)
489-10	1	1/2" NPT	1/4" NPT	
1252		3/4" NPT	1/4" NPT	
1252A			1/2" NPT	
2165-3	2	1" - 11 1/2 NPS-RH	3/4" NPT	
2165-3B			.843-.847	
2165-3A			1.053-1.057	

CGA Brass Tailpeices



Ordering Information

Part Number	CGA Connection	Figure	Thread of Bore for Tubing	Length (Approx.)
2603-2U	510, 580, 590	1	¼" NPT	2½"

Miscellaneous Brass Tailpeice

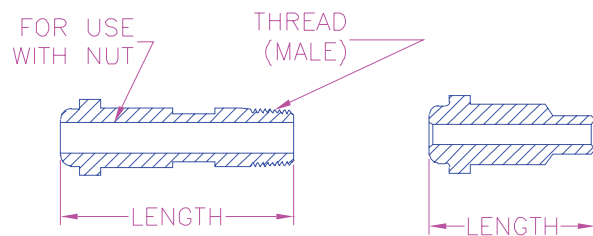


Fig 1 THREADED

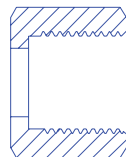
Fig 2 SWEAT END

Ordering Information

Part Number	For Use with Nut (RH or LH)	Figure	Thread of Bore for Tubing	Length (Approx.)
2233-3A	1" - 11½ NPS	1	¼" NPT	2½"
2670-35		2	542 I.D.	

Brass Union Connection Nuts

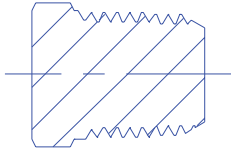
Internal Threads



Ordering Information

Part Number	Figure	Thread Connection	Wrench Flats
1302-1	2	9/16" - 18-LH	11/16"
1271-1		7/8" - 14-RH	17/8"
1371-1		7/8" - 14-LH	
2223-6		1" - 11½ NPS-RH	1¾"
2223-6A		1" - 11½ NPS-LH	

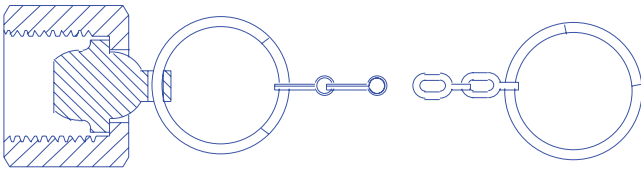
Brass Plugs



Ordering Information

Part Number	Thread Connection	Hex Flats
985B	1/4" NPT	3/16"
985D	1/2" NPT	7/8"
985E	3/4" NPT	1 1/8"

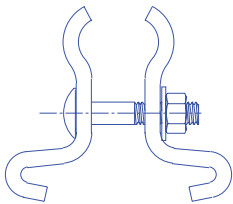
Brass Outlet Cap and Chain Assemblies



Ordering Information

Part Number	Thread Connection	End Ring Fits Pipe
10663	7/8" - 14NF-RH	1/2"
10664	7/8" 14NF-LH	

Brass Manifold Bracket



1125-8A Adjustable Clamp Assembly
(for pipe, tubing and tailpieces)

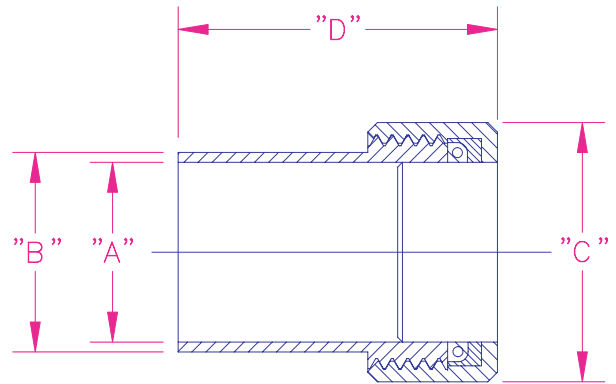
Ordering Information

Part Number	Use with
1125-8A	1/2" to 1 3/8" Pipe

Goddard Quikconnect Vacuum Couplings

Features

- Goddard "Quikconnect" vacuum couplings are available in either brass or 304 stainless steel
- An extensive range of tube sizes available. Most sizes nest, and can be used as reducers in combination with one another.
- May be used for vacuum down to 1×10^{-8} Microns
- Viton O-rings are standard
- "Quikconnect" vacuum couplings have four basic components:
 - * Knurled Nut
 - * Retainer Ring
 - * O-ring
 - * Sleeve



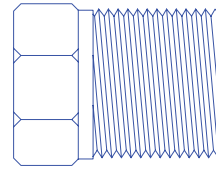
Ordering Information

Quikconnect Vacuum Couplings

Brass Machine Finish	"A"	"B"	"C"	"D"	Tube OD Size
B-000038-M	0.385"	0.500"	$\frac{13}{16}$ "	$1\frac{1}{4}$ "	$\frac{3}{8}$ "
B-000050-M	0.510"	0.625"	$\frac{7}{8}$ "	$1\frac{1}{4}$ "	$\frac{1}{2}$ "
B-000062-M	0.635"	0.750"	$1\frac{1}{8}$ "	$1\frac{3}{8}$ "	$\frac{5}{8}$ "
B-000075-M	0.760"	0.875"	$1\frac{1}{4}$ "	$1\frac{1}{2}$ "	$\frac{3}{4}$ "

Brass Plugs

(for pressures to 3000 PSIG)
Safety factor = 5:1

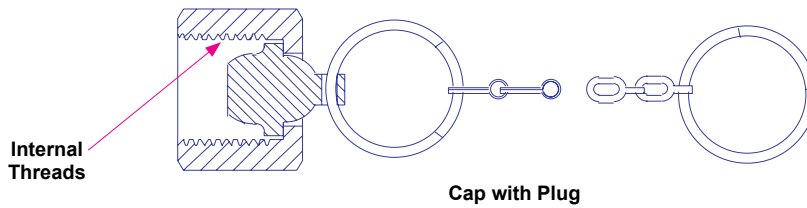


Typical Plug

Ordering Information

Part Number	Thread Connection	Hex Flats
985B	¼" NPT	9/16"
985D	½" NPT	7/8"
985E	¾" NPT	1 1/8"
985F	1" NPT	1 3/8"

Brass Outlet Cap and Chain Assemblies



Cap with Plug

Ordering Information

Part Number	Thread Connection	End Ring Fits Pipe
10663	7/8"-14NF-RH	½"
10664	7/8"-14NF-LH	½"