

Excess Flow Valve for Pressure Gauges 2884D

Application

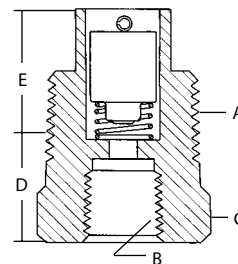
Designed for container use in pressure gauge installations to minimize excess gas discharge in the event the pressure gauge is sheared. A suitable shut-off valve should be installed between this valve and the pressure gauge to allow convenient gauge replacement.

Features

- Precision machined.
- Suitable for use with all 1/4" M.NPT pressure gauges.

Materials

Body Brass
 Valve Brass
 Spring Stainless Steel
 Pin Stainless Steel



2884D

Ordering Information



Part Number	A. Inlet Connection M. NPT	B. Outlet Connection F. NPT	C. Wrench Hex Flats	D. Effective Length (Approx.)	E. Threaded End To Port	Approximate Closing Flow*		
						Liquid (GPM Propane)	Vapor SCFH (Propane)	
							25 PSIG Inlet	100 PSIG Inlet
2884D	3/4"	1/4"	1 1/16"	1 1/4"	1 1/16"	N/A	60	110

* Based on horizontal installation of excess flow valve. Flows are slightly more when valves are installed with outlet up; slightly less when installed with outlet down.
 NOTE: Multiply flow rate by .94 to determine liquid butane flow.