

Hose End Adapters for DOT Cylinder Filling 7193D-10 and 7193U-10

Application

Designed to provide quick and easy filling of DOT cylinders with POL or Type I connections. This adapter may be used with hydraulic and electric automatic systems or with manual systems in conjunction with a RegO® 7901TB Quick Acting Shut-Off Valve.

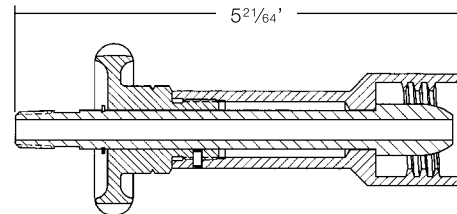
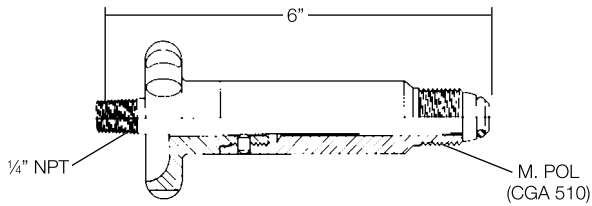
These filling connectors have an extended connection on the handwheel, which makes it possible to connect the loading hose to valves on cylinders with fixed collars. The handwheel is well outside the collar for easy operation.



7193U-10



7193D-10



Part Number	Applications	Inlet Connection	Outlet Connection	Materials
7193D-10	Filling of DOT Cylinders with POL Connections	1/4" M. NPT	M. POL (CGA 510)	Brass & Stainless Steel
7193U-10	Filling of DOT Cylinders with Type I Connections		Type 1 Connection (1 ⁵ / ₁₆ " M. ACME)	Brass