

Double Check Filler Valves for Forklift, Motor Fuel and RV Tanks 7647 Series

Application

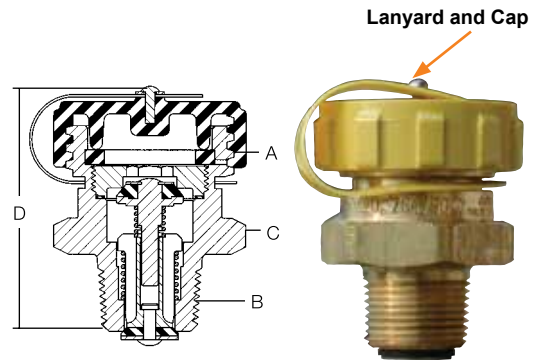
Designed to provide fast filling of forklift, motor fuel, and recreational vehicle tanks.

Features

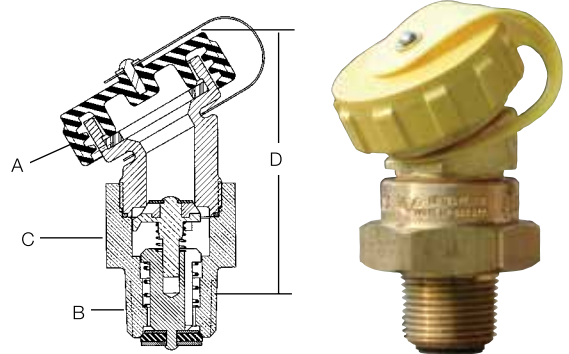
- Resilient seat disc in lower check designed to provide a gas tight seal without leakage.
- Double back check provides added system protection.
- 7647SA has 30° angle on hose connection. Makes connection and disconnection easier for certain engine fuel applications.
- Large 1 1/4" wrench flats on 7647SC allow use of socket wrench for easy installation.
- Specify RegO® Filler Valves on all your original tank purchases to insure quality and dependable performance.

Materials

Upper Body..... Brass
 Lower Body..... Brass
 Springs..... Stainless Steel
 Washer and Seat Discs..... Resilient Synthetic Rubber
 Cap..... Plastic



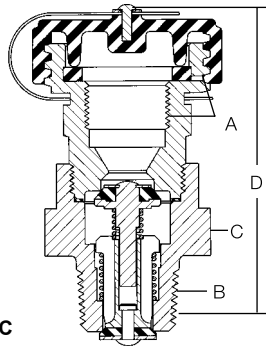
7647SC



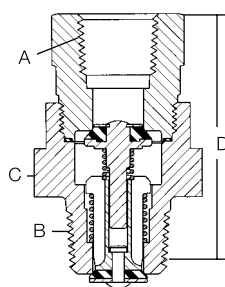
7647SA



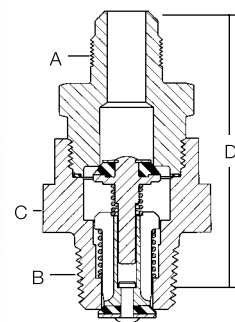
7647DC



7647H



7647HF



Ordering Information

Part Number		A	B	C	D	Propane Liquid Capacity at Various Differential Pressures (GPM)***				
Basic	w/Lanyard and Cap	Hose Connection	Tank Connection M. NPT	Wrench Flats	Effective Length (Approx.)	10 PSIG	20 PSIG	30 PSIG	40 PSIG	50 PSIG
7647H	-	1/2" F. NPT	3/4"	1 1/2"	2 1/16"	14	20	24	27	50
7647HF	-	1/2" SAE Flare			2 5/8"					
-	7647DC	1 3/4" ACME & F. POL			3"					
-	7647SA**	1 3/4" ACME			3 1/16"					
-	7647SC*		1 3/4"	2 1/4"*						

* Large 1 1/4" hex wrench flats.
 ** 30° angle on 1 3/4" ACME hose connection.
 *** Multiply flow rate by .94 to determine liquid butane capacity.