

# 3" Flanged Internal Valves for Bobtail Delivery Trucks, Transports and Large Stationary Storage Containers A3217A & A3217DA

## Application

Designed primarily for LP-Gas and anhydrous ammonia filling and/or withdrawal on MC331 bobtail delivery trucks, transports and stationary storage tanks with flanged pumps or piping. Installation is quick and easy, and the valve may be operated manually by cable or pneumatically.

Lever available on right or left side to allow for installation without the use of an extra pulley.



## Features

### Provides More Efficient Operation

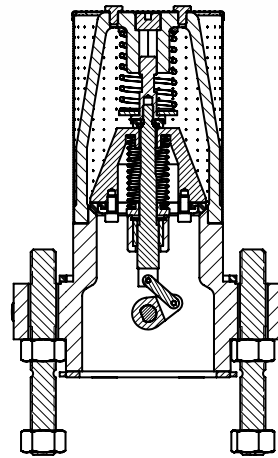
- Flow passages designed to allow substantially higher flow without cavitation or loss of efficiency--saving time and money.
- Simple operating lever facilitates easy adaptation of all cable controls.
- Lever available on right or left side to allow for installation without the use of an extra pulley.
- Nylon bearing supported operating shaft provides smooth, easy operation.

### Less Frequent-Easier Maintenance

- Stainless steel screws resist rusting and are easily removed during valve disassembly.
- Heavy duty rod wiper helps minimize dirt and foreign material from entering operating shaft and hampering operation.

### Durable Construction

- Cadmium plating helps resist corrosion during storage and use.
- All ferrous materials with a temperature range of -40° F. to +130° F. and a pressure rating of 400 psi.
- Sturdy retaining ring secures operating cam to provide for more durable, slack-free operation.
- Built-in excess flow valve.
- Specify RegO® Internal Valves on your next new tank or when your truck is rebuilt.



## Ordering Information

| Part Number          | Operating Lever Position | Inlet Connection                 | Outlet Connection      | Closing Flow GPM |     | Accessories          |                      |
|----------------------|--------------------------|----------------------------------|------------------------|------------------|-----|----------------------|----------------------|
|                      |                          |                                  |                        | LP-Gas           | NH3 | Pneumatic Actuator   |                      |
|                      |                          |                                  |                        |                  |     | Right Operation      | Left Operation       |
| <b>Single Flange</b> |                          |                                  |                        |                  |     |                      |                      |
| A3217AR160           | A3217AL160               | 3" 300# ANSI RF Modified Flange* | 3" 300# ANSI RF Flange | 160              | 145 | A3217ARPA<br>A3217RA | A3217ALPA<br>A3217LA |
| A3217AR210           | A3217AL210               |                                  |                        | 210              | 190 |                      |                      |
| A3217AR260           | A3217AL260               |                                  |                        | 260              | 236 |                      |                      |
| A3217AR410           | A3217AL410               |                                  |                        | 410              | 372 |                      |                      |
| A3217AR510           | A3217AL510               |                                  |                        | 510              | 459 |                      |                      |
| <b>Double Flange</b> |                          |                                  |                        |                  |     |                      |                      |
| A3217DAR160          | A3217DAL160              | 3" 300# ANSI RF Modified Flange* | 3" 300# ANSI RF Flange | 160              | 145 | A3217ARPA<br>A3217RA | A3217ALPA<br>A3217LA |
| A3217DAR210          | A3217DAL210              |                                  |                        | 210              | 190 |                      |                      |
| A3217DAR260          | A3217DAL260              |                                  |                        | 260              | 236 |                      |                      |
| A3217DAR410          | A3217DAL410              |                                  |                        | 410              | 372 |                      |                      |
| A3217DAR510          | A3217DAL510              |                                  |                        | 510              | 459 |                      |                      |

Furnished with mounting studs and nuts

\*\*Modified bore=4 1/2" diameter with 5 1/2" diameter raised face.

**G10**

# 3" Flanged Internal Valves for Bobtail Delivery Trucks, Transports, and Large Stationary Storage Tanks

## A3217FPA and A3217FLPA Pneumatic Actuators

These Pneumatic Actuators are designed specifically for use with the A3217 Series 3" Internal Valves. The diaphragm design provides a convenient means of opening and closing the valve from a remote location, using either air or nitrogen.

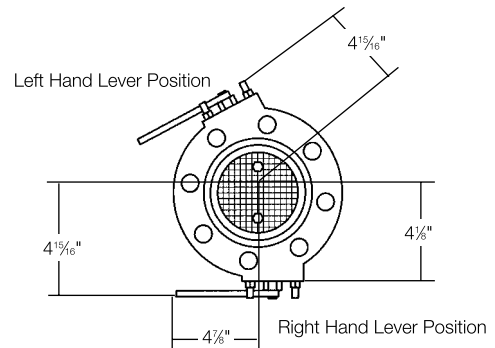
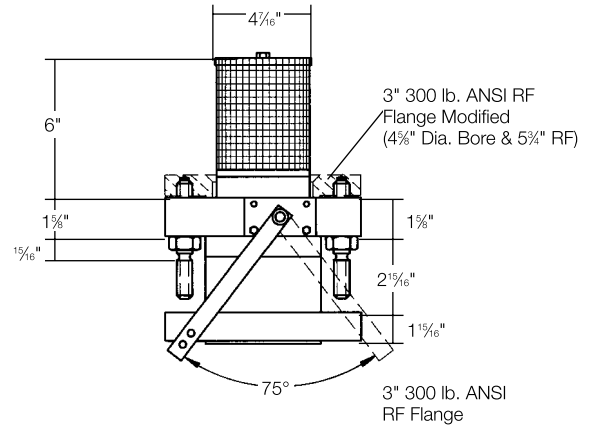


## Features

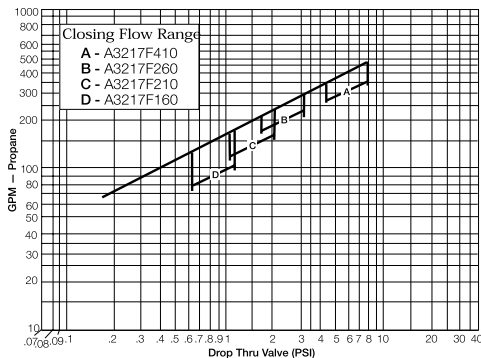
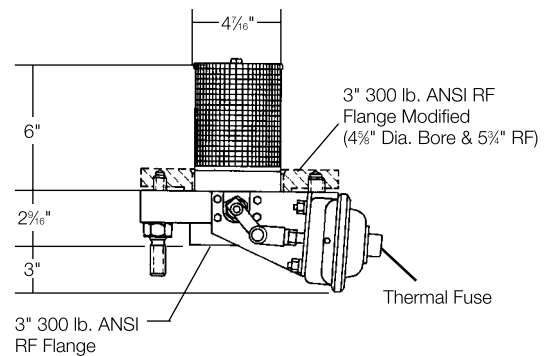
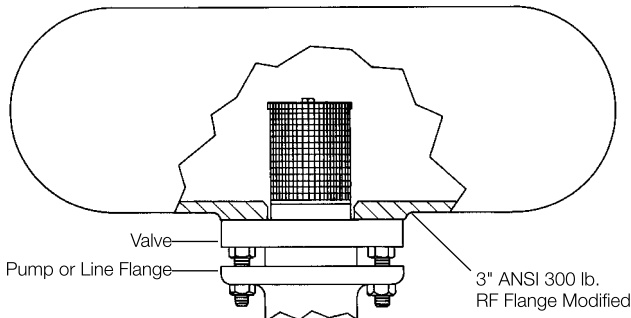
- Diaphragm type—no seals to leak.
- Easily installed on internal valve "in-line."
- Utilizes standard air brake chamber with proven performance over many years of heavy-duty truck/trailer applications.
- Compatible with existing air interlock systems.
- Operates with pressures of 50-150 psig.
- Thermal Fuse installed complies with DOT thermal protection requirements.

## Materials

|                           |                             |
|---------------------------|-----------------------------|
| Body and Valve Cage ..... | Cadmium Plated Ductile Iron |
| Seat .....                | Nickel Chrome Plated Steel  |
| Strainer .....            | Stainless Steel             |
| Shaft .....               | Stainless Steel             |
| Pilot Valve Stem .....    | Stainless Steel             |
| Springs .....             | Stainless Steel             |
| Actuator Cam .....        | Stainless Steel             |
| Lever .....               | Cadmium Plated Carbon Steel |
| Seat Disc .....           | Resilient Synthetic Rubber  |



Typical Valve Installation



NOTE: Multiply flow rate by .94 to determine liquid butane flow and by .90 to determine liquid anhydrous ammonia flow.

