



November 2020

## RegO® Field Topics

### Identifying Relief Valve Manifolds

**Field Topics** are intended to provide useful information to the network of authorized LP-Gas and Anhydrous Ammonia distributors regarding the proper use of RegO® products. **Warning Bulletins** covering many of the hazards involved are available from RegO for more detailed information. These bulletins can be found in our **L-500, L-102 and NH3-102** catalogs. Neither the Field Topic or the Warning Bulletins are intended to conflict with federal, state, or local ordinances and/or regulations, which should be observed at all times. This information also is not intended to be a substitute for or to supplement any training in the safe handling and use of propane and related equipment, as required by any applicable law. By providing this material, ECI assumes no responsibility for providing any such training. Only individuals properly trained in the safe handling and use of propane and related equipment should be permitted to do so, and by providing this information, ECI does not assume responsibility for providing such training.

For more information on LP Gas system requirements, refer to Liquefied Petroleum Gas Code (NFPA 58), National Fuel Gas Code (NFPA 54), National Propane Gas Association Safety Handbook, the RegO LP-Gas Serviceman's Manual L-545, RegO catalogs L-500/L-102/NH3-102, ANSI K61.1 Safety Requirements for Storage and Handling of Anhydrous Ammonia, as well as any applicable local codes and ordinances.

### Identifying Relief Valve Manifolds

RegO has prepared this field topic to help identify RegO MultiPort®, DeltaPort™ and DuoPort® relief valve manifolds. These pressure relief valve manifolds are available in 2" F. NPT, 3" modified flange and 4" flanged. These manifolds incorporate an additional relief valve, not included in the flow rating, allowing for servicing or replacement of any one of the relief valves without evacuating the container.





Relief Valve Manifold Coding		
Prefix	Meaning	Example
<b>Compatibility</b>		
A	LPG & NH3 Compatibility	<u>A</u> 8563G
AA	NH3 Compatibility	<u>AA</u> 8532MA250
No Prefix	LPG Compatibility	8542G (No A or AA prefix present)
<b>Relief Valve Manifold Series</b>		
8540	DuoPort® Relief Manifold	<u>8542</u> G
8530	DeltaPort™ Relief Manifold	AA <u>8532</u> MA265
8560	MultiPort® Relief Manifold 3” Modified Flange	A <u>8564</u> G
8570	MultiPort® Relief Manifold 4” Flange	A <u>8573</u> AG
<b>Number of Relief Valve’s Installed</b>		
2	2 Relief Valves	854 <u>2</u> G
3	3 Relief Valves	853 <u>3</u> G
4	4 Relief Valves	A857 <u>4</u> AG
<b>ASME or UL Rating</b>		
No Prefix	UL Rated	8542G (No prefix present)
A	ASME Rated	A8564 <u>A</u> G
UA	UL & ASME Rated	AA8542 <u>UA</u> 250
<b>Set Pressure in PSIG</b>		
G	250 PSIG	8533 <u>G</u>
250	250 PSIG	AA8533MA <u>250</u>
265	265 PSIG	AA8532MA <u>265</u>
55 to 155	55 to 155 PSIG within 5 PSIG increments	A8564A <u>150</u> , 150 PSIG setting
200 to 358	200 to 358 PSIG within 5 PSIG increments	A8563A <u>225</u> , 225 PSIG setting

**Example: A8574AG**

“A” = LPG & NH3 Compatibility

“8570” = MultiPort® Relief Manifold 4” Flange

“4” = 4 Relief Valves

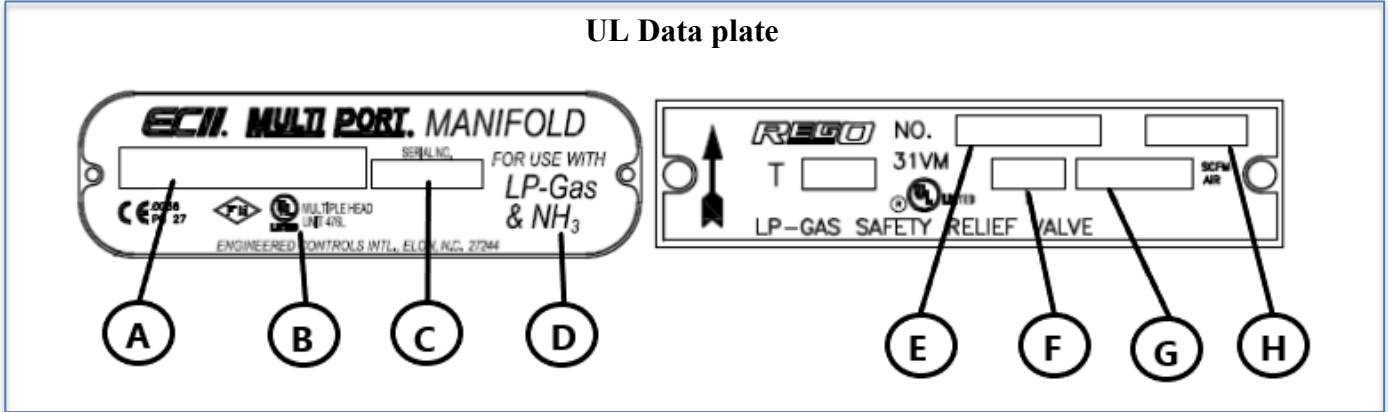
“A” = ASME Rated

“G” = 250 PSIG

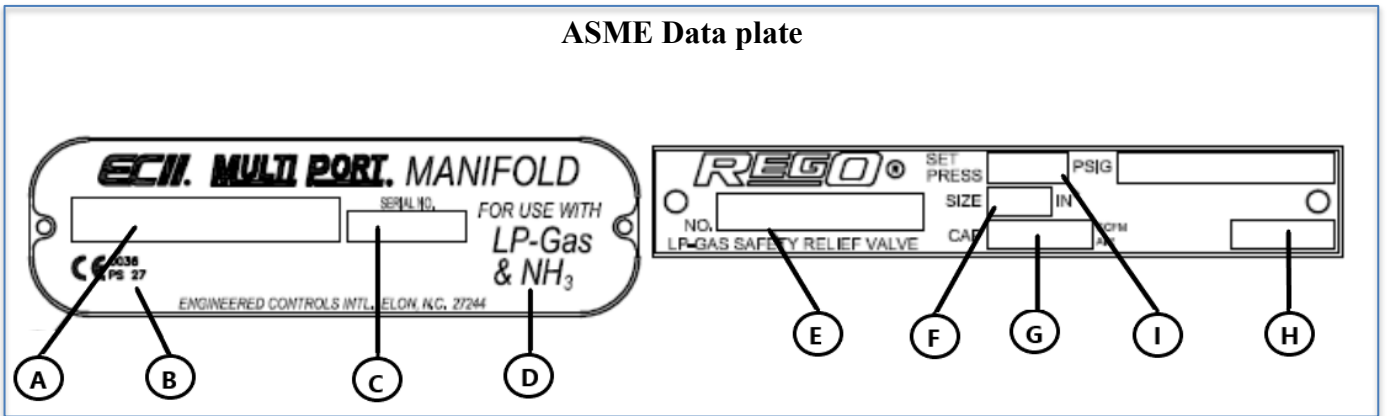


RegO MultiPort® manifolds include two (2) data plates that provide UL or ASME ratings

### UL Data plate



### ASME Data plate

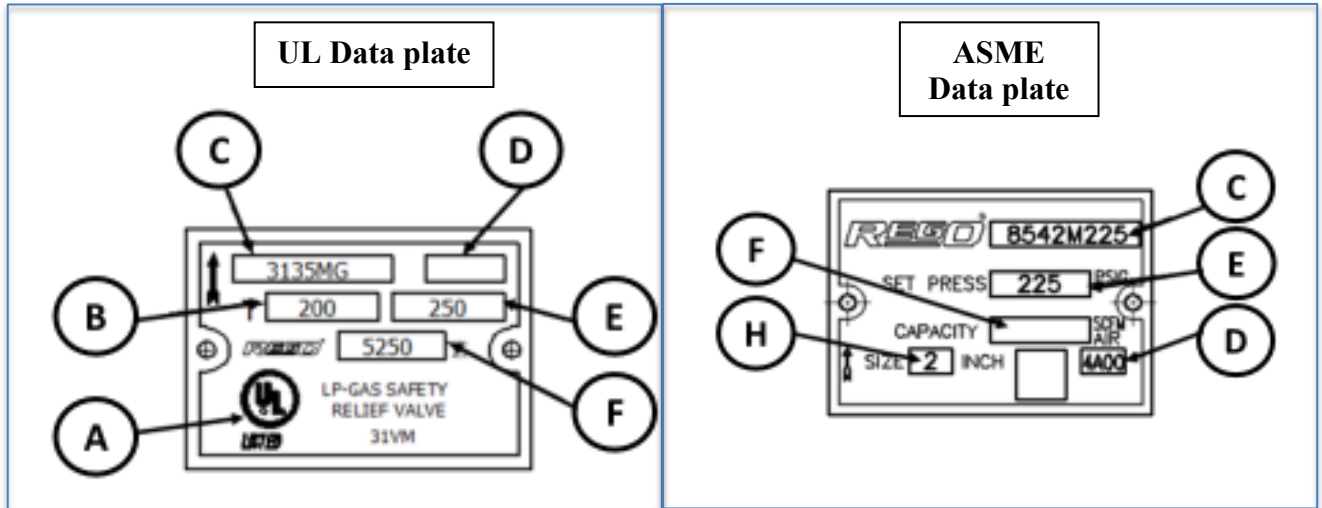


Symbol	Information Provided
A	Model Number
B	Certifications
C	Serial Number
D	Compatibility
E	Relief Valve Number and quantity
F	Relief Valve Size
G	SCFM Air Capacity
H	Date Code (Month, Week and Year)
I	Set Pressure

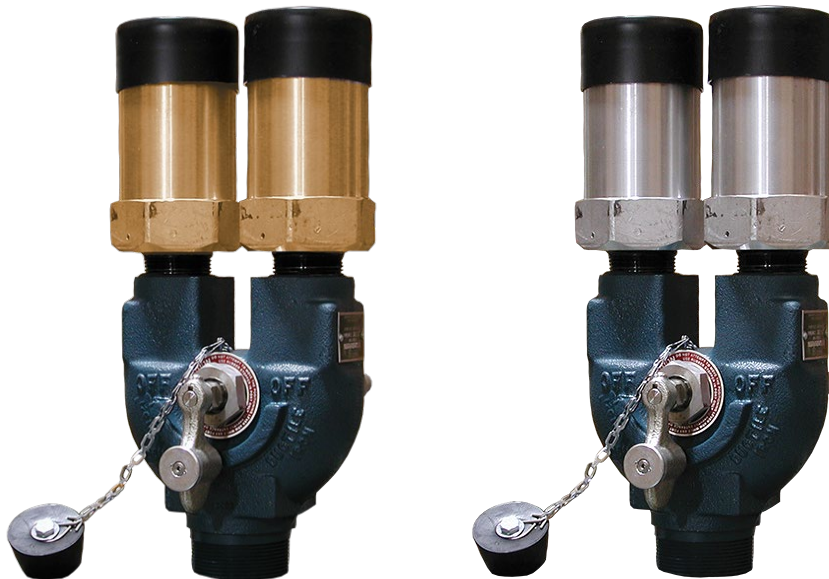




RegO DuoPort® manifolds include a data plate that provide UL or ASME ratings

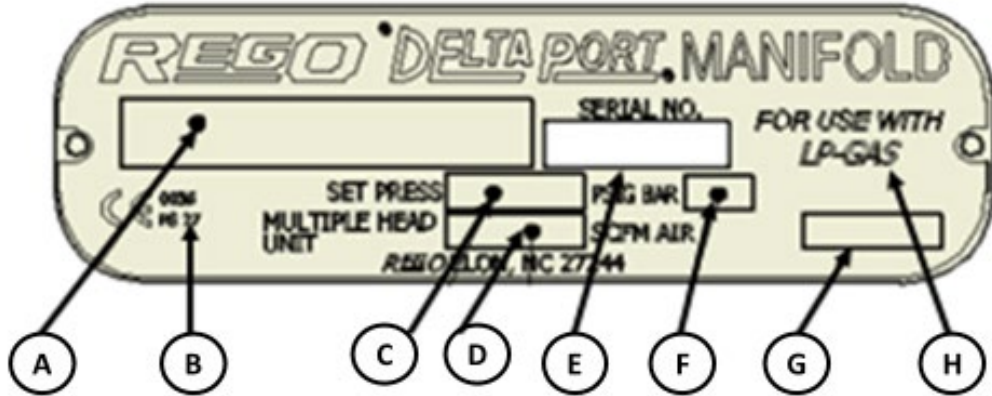


Symbol	Information Provided
A	Certifications
B	Container Type
C	Model Number
D	Date Code (Month, Week and Year)
E	Set Pressure
F	SCFM Air Capacity





RegO DeltaPort™ manifolds include a data plate that provides ASME ratings



Symbol	Information Provided
A	Model Number
B	Certifications
C	Set Pressure PSIG
D	SCFM Air Capacity
E	Serial Number
F	Set Pressure Bar
G	Date Code (Month, Week and Year)
H	Compatibility

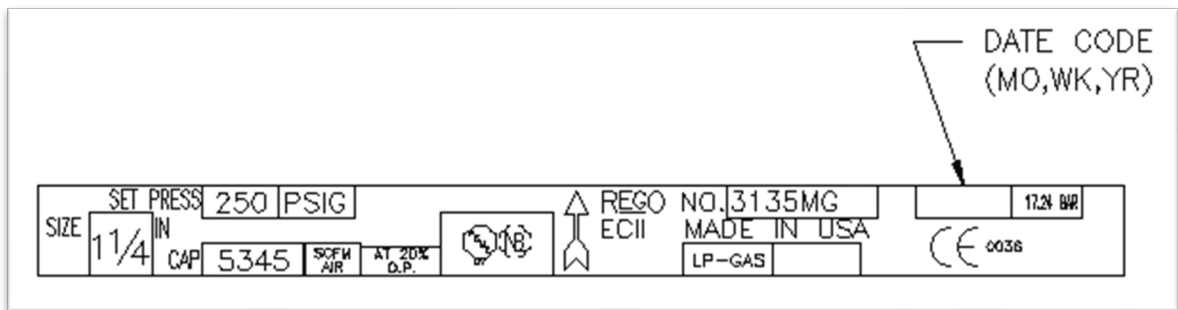






## Pressure Relief Valves

For existing manifolds, always refer to the date code stamped on the pressure relief valve itself to determine the date of manufacture. Relief valves must be replaced with matching relief valves according to the data plate provided on your relief valve manifold. This will ensure the stamped information will match according to the relief valve installed.



Should you have any questions or concern, please contact me.

**Cody Reeves**

*Technical Services Manager*



O: +1 336.446.7292

[creeves@regoproducts.com](mailto:creeves@regoproducts.com)

100 RegO Drive, Elon, NC 27244 USA