



| | | | |
|-----------|---|-----------|----------------|
| To: | TSSA | From: | Janet Townsend |
| Company: | Engineered Controls International, LLC. | Phone: | 416-747-4291 |
| Pages: | 7 | Location: | Toronto |
| Our File: | ANR-4421 | Date: | April 4, 2017 |

Your File: 2014466

Subject: Request for Design Registration

Dear Ms. Francis,

CSA has reviewed the documentation submitted by TSSA on behalf of Engineered Controls International, LLC.

These fittings have been registered by CSA for the Province of Québec. In accordance with an agreement between CSA, the Provinces of Québec and Saskatchewan; this registration is recognized by Quebec and Saskatchewan. These fittings are acceptable for use in these Provinces.

The letters CSA will be applied as a prefix to the CRN indicate which fittings have been registered in this manner. A copy of the stamped Statutory Declaration is attached.

The CRN is CSA-0H19070.56.

A copy of the Statutory Declaration with an original stamp affixed will be forwarded to you along with our invoice by regular mail.

Yours truly

A handwritten signature in blue ink that reads 'Janet Townsend'.

Janet Townsend
Account Manager
CSA Group



Technical Standards and Safety Authority
345 Carlingview Drive
Toronto, Ontario M9W 6N9
www.tssa.org

Show facsimile of manufacturer's logo or trademark, as it will appear on the fitting, in the space below

REGO®

Technical Review performed per CSA B51
Performed by: ANRIC Enterprises Inc.

Signed: Ashtwell
Date: 30 March, 2017

STATUTORY DECLARATION Registration of Fittings

I, **CHAD THOMAS, VP GLOBAL ENGINEERING**

(Name and Position, e.g. President, Plant Manager, Chief Engineer)

of **ENGINEERED CONTROLS INTERNATIONAL, LLC**

(Name of Manufacturer)

Located at **100 REGO DRIVE, ELON, NC - 27244**

(Plant Address)

336-449-7707

(Telephone No.)

(Fax No.)

☒ I do solemnly declare that the fittings listed hereunder, which are subject to the *Technical Standards and Safety Act*, Boilers and Pressure Vessels Regulation, comply with all of the requirements of **ASME B31.1**

(Title of recognized North American Standard)

which specifies the dimensions, materials of construction, pressure/temperature ratings, identification marking the fittings and service;

☐ or are not covered by the provisions of a recognized North American standard and are therefore manufactured to comply with as supported by the attached data which identifies the dimensions, material of construction, pressure/temperature ratings and the basis for such ratings, the marking of the fitting for identification and service.

I further declare that the manufacture of these fittings is controlled by a quality system meeting the requirements of **ISO90001** which has been verified by the following authority, **UNDERWRITERS LABORATORY INC**

The items covered by this declaration, for which I seek registration, are category **"H"** type fittings. In support of this application, the following information and/or test data are attached as follows:

SEE ATTACHED LIST

(drawings, calculations, test reports, etc.)

Declared before me at **Engineered Controls, Inc.** in the **County** of **Alamance**
the **16th** day of **December** AD 20 **16**

Commissioner for Oaths:

MARISA E. ELLIOTT
(Printed name)

MARISA E. ELLIOTT
(Signature)

Chad M. Thomas
(Signature of Declarer)

MARISA E. ELLIOTT
NOTARY PUBLIC
ALAMANCE COUNTY
NORTH CAROLINA

MY commission expires
8/31/2021

FOR OFFICE USE ONLY

To the best of my knowledge and belief, the application meets the requirements of the *Technical Standards and Safety Act*, Boilers and Pressure Vessels Regulation, and CSA Standard B51 and is accepted for registration in Category **H**

CRN:

CSA-OH19070.56

Registered by:

A. BANWATT

Dated:

MARCH 30, 2017

Registration expires on: **JAN 10 2027**

REGISTERED

CRN: CSA-OH19070.56

Registration Process administered by
CSA Group per CSA B51



Colleen Anne Ratcliff,
a Commissioner, etc., City of Toronto, for the
Technical Standards & Safety Authority
Expires July 24, 2019.



Note: 1. This registration is based on a CSA B51 reciprocal policy.
2. See attachment as the scope of registration.

| Category | System Number | Description | Drawing Number | Body Number | Body Material | Service Pressure |
|----------|---------------|-------------|----------------|-------------|--|------------------|
| H | BK9412-SQ2 | Globe Valve | B-9409-1C | B-9412PU-1 | Bronze Cast Alloy, UNS C92200, ASTM B61 | 600 |
| | | | B-9412-22P2 | B-9412-22P2 | Stainless Steel Pipe, ASTM A312, TP304L | 600 |
| | | | B-9412-22P1 | B-9412-22P1 | Copper Tubing, UNS C12200, ASTM B743/B88 | 600 |
| | | | B-9410-16SS | B-9410-16SS | Stainless Steel Pipe, ASTM A249, TP304L | 600 |

 CSA Group 10F2
 ATTACHMENT TO
 C.R.N. CSA-0419070.56
 Signed: [Signature]
 178 Rexdale Boulevard, Toronto, ON Canada M9W 1R3

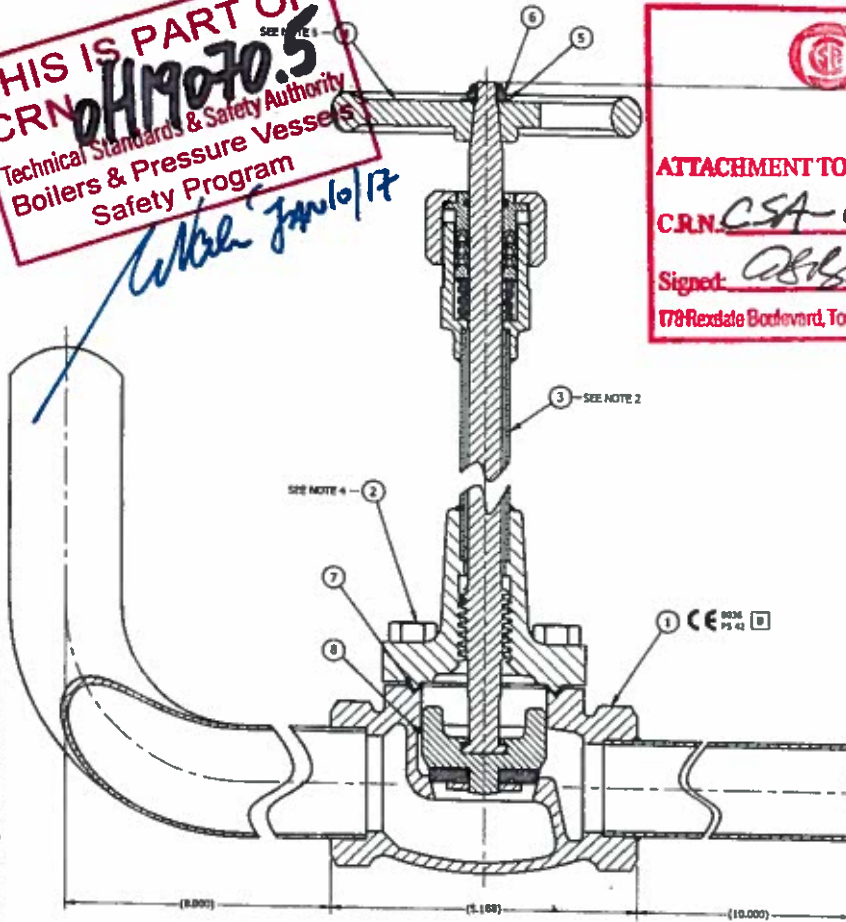
THIS IS PART OF
 CRN 0419070.5
 Technical Standards & Safety Authority
 Boilers & Pressure Vessels
 Safety Program

[Signature] Jan 10/17

THIS IS PART OF
CRN 0H19070.5
 Technical Standards & Safety Authority
 Boilers & Pressure Vessels
 Safety Program

When Jan 10/17

APPROVED/CONTROLLED



2 OF 2

ATTACHMENT TO

C.R.N. **CSA 0H19070.56**

Signed: *[Signature]*

178 Rexdale Boulevard, Toronto, ON Canada M9W 1R3



16.19 APPROX.
(CLOSED)

NOTES:

- CLEAN BODY ASSEMBLY & GASKET PER B-11550-400. CLEAN UPPER ASSEMBLY PER SPECIFICATIONS ON DRAWING B-9412-KITU.
- STAMP DATE CODE (MO, WK, YR) AND "CE", "REGO" & "PS 42" (SEE 11395-CE, FIG 17) ON BODY AS SHOWN PRIOR TO ASSEMBLY. ALSO STAMP DATE CODE (MO, WK, YR) ON THE PLAT OF THE BONNET.
- USING .187 FIGURES, STAMP "BK9412-SQ2" ON PAD OF BODY PRIOR TO ASSEMBLY.
- INSTALL UPPER ASSEMBLY ONTO THE BODY AND APPLY 400-450 IN-LBS OF TORQUE TO THE BONNET BOLTS USING AN X-PATTERN.
- PRESS OR TAP HANDWHEEL ONTO STEM TO SHOULDER. INSTALL THE WASHER AND THEN THE LOCKWASHER ONTO THE STEM. TORQUE THE NUT TIGHT AGAINST THE WASHER.
- TEST PER B-9402-100.
- PAK STAMP "425" IN THE TORQUE BOX OF THE TORQUE TAG. ATTACH THE TAG TO THE HANDWHEEL.
- PLACE EXTRA GASKET IN SEPARATE POLY BAG AND PACKAGE WITH VALVE.
- VALVE TO BE SEALED IN POLYETHYLENE BAG AFTER IT HAS DRIED FOR NO LESS THAN 24 HOURS, UNLESS REQUESTED BY PURCHASER TO SHIP PRIOR TO DRYING.
- INCLUDE INSTRUCTION SHEET IN POLY BAG WITH VALVE.
- INCLUDE OXYGEN CLEAN INFORMATION IN OR ON PACKAGING.

| ITEM | QTY | TITLE | PART NUMBER |
|------|-----|---|--------------|
| 10 | 1 | INSTRUCTION SHEET (NOT SHOWN) SEE NOTE 10 | BK3400-350 |
| 9 | 1 | TORQUE TAG (NOT SHOWN) SEE NOTE 7 | B-9403-50 |
| 8 | 1 | SEAT DISC ASSY | B-9412-6 |
| 7 | 2 | GASKET SEE NOTE 8 | B-8511-6T |
| 6 | 1 | LOCKWASHER | 7513-1355 |
| 5 | 1 | WASHER | 450027 |
| 4 | 1 | HANDWHEEL - GREEN | 7509-15TOP |
| 3 | 1 | UPPER ASSEMBLY - UNTESTED | B-9412-KITU |
| 2 | 4 | BOLT | B-9409-2155 |
| 1 | 1 | BODY ASSEMBLY | B-9412-61SP2 |

| | |
|---|---|
| T. TORQUE 9-18-06 11-05-09 10-06-09 10-09-09 | USE THE APPROVED SPECIFICATIONS 1. 1/2" DIA. 1/2" DIA. 2. 1/2" DIA. 1/2" DIA. 3. 1/2" DIA. 1/2" DIA. 4. 1/2" DIA. 1/2" DIA. 5. 1/2" DIA. 1/2" DIA. 6. 1/2" DIA. 1/2" DIA. 7. 1/2" DIA. 1/2" DIA. 8. 1/2" DIA. 1/2" DIA. 9. 1/2" DIA. 1/2" DIA. 10. 1/2" DIA. 1/2" DIA. 11. 1/2" DIA. 1/2" DIA. 12. 1/2" DIA. 1/2" DIA. 13. 1/2" DIA. 1/2" DIA. 14. 1/2" DIA. 1/2" DIA. 15. 1/2" DIA. 1/2" DIA. 16. 1/2" DIA. 1/2" DIA. 17. 1/2" DIA. 1/2" DIA. 18. 1/2" DIA. 1/2" DIA. 19. 1/2" DIA. 1/2" DIA. 20. 1/2" DIA. 1/2" DIA. 21. 1/2" DIA. 1/2" DIA. 22. 1/2" DIA. 1/2" DIA. 23. 1/2" DIA. 1/2" DIA. 24. 1/2" DIA. 1/2" DIA. 25. 1/2" DIA. 1/2" DIA. 26. 1/2" DIA. 1/2" DIA. 27. 1/2" DIA. 1/2" DIA. 28. 1/2" DIA. 1/2" DIA. 29. 1/2" DIA. 1/2" DIA. 30. 1/2" DIA. 1/2" DIA. 31. 1/2" DIA. 1/2" DIA. 32. 1/2" DIA. 1/2" DIA. 33. 1/2" DIA. 1/2" DIA. 34. 1/2" DIA. 1/2" DIA. 35. 1/2" DIA. 1/2" DIA. 36. 1/2" DIA. 1/2" DIA. 37. 1/2" DIA. 1/2" DIA. 38. 1/2" DIA. 1/2" DIA. 39. 1/2" DIA. 1/2" DIA. 40. 1/2" DIA. 1/2" DIA. 41. 1/2" DIA. 1/2" DIA. 42. 1/2" DIA. 1/2" DIA. 43. 1/2" DIA. 1/2" DIA. 44. 1/2" DIA. 1/2" DIA. 45. 1/2" DIA. 1/2" DIA. 46. 1/2" DIA. 1/2" DIA. 47. 1/2" DIA. 1/2" DIA. 48. 1/2" DIA. 1/2" DIA. 49. 1/2" DIA. 1/2" DIA. 50. 1/2" DIA. 1/2" DIA. 51. 1/2" DIA. 1/2" DIA. 52. 1/2" DIA. 1/2" DIA. 53. 1/2" DIA. 1/2" DIA. 54. 1/2" DIA. 1/2" DIA. 55. 1/2" DIA. 1/2" DIA. 56. 1/2" DIA. 1/2" DIA. 57. 1/2" DIA. 1/2" DIA. 58. 1/2" DIA. 1/2" DIA. 59. 1/2" DIA. 1/2" DIA. 60. 1/2" DIA. 1/2" DIA. 61. 1/2" DIA. 1/2" DIA. 62. 1/2" DIA. 1/2" DIA. 63. 1/2" DIA. 1/2" DIA. 64. 1/2" DIA. 1/2" DIA. 65. 1/2" DIA. 1/2" DIA. 66. 1/2" DIA. 1/2" DIA. 67. 1/2" DIA. 1/2" DIA. 68. 1/2" DIA. 1/2" DIA. 69. 1/2" DIA. 1/2" DIA. 70. 1/2" DIA. 1/2" DIA. 71. 1/2" DIA. 1/2" DIA. 72. 1/2" DIA. 1/2" DIA. 73. 1/2" DIA. 1/2" DIA. 74. 1/2" DIA. 1/2" DIA. 75. 1/2" DIA. 1/2" DIA. 76. 1/2" DIA. 1/2" DIA. 77. 1/2" DIA. 1/2" DIA. 78. 1/2" DIA. 1/2" DIA. 79. 1/2" DIA. 1/2" DIA. 80. 1/2" DIA. 1/2" DIA. 81. 1/2" DIA. 1/2" DIA. 82. 1/2" DIA. 1/2" DIA. 83. 1/2" DIA. 1/2" DIA. 84. 1/2" DIA. 1/2" DIA. 85. 1/2" DIA. 1/2" DIA. 86. 1/2" DIA. 1/2" DIA. 87. 1/2" DIA. 1/2" DIA. 88. 1/2" DIA. 1/2" DIA. 89. 1/2" DIA. 1/2" DIA. 90. 1/2" DIA. 1/2" DIA. 91. 1/2" DIA. 1/2" DIA. 92. 1/2" DIA. 1/2" DIA. 93. 1/2" DIA. 1/2" DIA. 94. 1/2" DIA. 1/2" DIA. 95. 1/2" DIA. 1/2" DIA. 96. 1/2" DIA. 1/2" DIA. 97. 1/2" DIA. 1/2" DIA. 98. 1/2" DIA. 1/2" DIA. 99. 1/2" DIA. 1/2" DIA. 100. 1/2" DIA. 1/2" DIA. 101. 1/2" DIA. 1/2" DIA. 102. 1/2" DIA. 1/2" DIA. 103. 1/2" DIA. 1/2" DIA. 104. 1/2" DIA. 1/2" DIA. 105. 1/2" DIA. 1/2" DIA. 106. 1/2" DIA. 1/2" DIA. 107. 1/2" DIA. 1/2" DIA. 108. 1/2" DIA. 1/2" DIA. 109. 1/2" DIA. 1/2" DIA. 110. 1/2" DIA. 1/2" DIA. 111. 1/2" DIA. 1/2" DIA. 112. 1/2" DIA. 1/2" DIA. 113. 1/2" DIA. 1/2" DIA. 114. 1/2" DIA. 1/2" DIA. 115. 1/2" DIA. 1/2" DIA. 116. 1/2" DIA. 1/2" DIA. 117. 1/2" DIA. 1/2" DIA. 118. 1/2" DIA. 1/2" DIA. 119. 1/2" DIA. 1/2" DIA. 120. 1/2" DIA. 1/2" DIA. 121. 1/2" DIA. 1/2" DIA. 122. 1/2" DIA. 1/2" DIA. 123. 1/2" DIA. 1/2" DIA. 124. 1/2" DIA. 1/2" DIA. 125. 1/2" DIA. 1/2" DIA. 126. 1/2" DIA. 1/2" DIA. 127. 1/2" DIA. 1/2" DIA. 128. 1/2" DIA. 1/2" DIA. 129. 1/2" DIA. 1/2" DIA. 130. 1/2" DIA. 1/2" DIA. 131. 1/2" DIA. 1/2" DIA. 132. 1/2" DIA. 1/2" DIA. 133. 1/2" DIA. 1/2" DIA. 134. 1/2" DIA. 1/2" DIA. 135. 1/2" DIA. 1/2" DIA. 136. 1/2" DIA. 1/2" DIA. 137. 1/2" DIA. 1/2" DIA. 138. 1/2" DIA. 1/2" DIA. 139. 1/2" DIA. 1/2" DIA. 140. 1/2" DIA. 1/2" DIA. 141. 1/2" DIA. 1/2" DIA. 142. 1/2" DIA. 1/2" DIA. 143. 1/2" DIA. 1/2" DIA. 144. 1/2" DIA. 1/2" DIA. 145. 1/2" DIA. 1/2" DIA. 146. 1/2" DIA. 1/2" DIA. 147. 1/2" DIA. 1/2" DIA. 148. 1/2" DIA. 1/2" DIA. 149. 1/2" DIA. 1/2" DIA. 150. 1/2" DIA. 1/2" DIA. 151. 1/2" DIA. 1/2" DIA. 152. 1/2" DIA. 1/2" DIA. 153. 1/2" DIA. 1/2" DIA. 154. 1/2" DIA. 1/2" DIA. 155. 1/2" DIA. 1/2" DIA. 156. 1/2" DIA. 1/2" DIA. 157. 1/2" DIA. 1/2" DIA. 158. 1/2" DIA. 1/2" DIA. 159. 1/2" DIA. 1/2" DIA. 160. 1/2" DIA. 1/2" DIA. 161. 1/2" DIA. 1/2" DIA. 162. 1/2" DIA. 1/2" DIA. 163. 1/2" DIA. 1/2" DIA. 164. 1/2" DIA. 1/2" DIA. 165. 1/2" DIA. 1/2" DIA. 166. 1/2" DIA. 1/2" DIA. 167. 1/2" DIA. 1/2" DIA. 168. 1/2" DIA. 1/2" DIA. 169. 1/2" DIA. 1/2" DIA. 170. 1/2" DIA. 1/2" DIA. 171. 1/2" DIA. 1/2" DIA. 172. 1/2" DIA. 1/2" DIA. 173. 1/2" DIA. 1/2" DIA. 174. 1/2" DIA. 1/2" DIA. 175. 1/2" DIA. 1/2" DIA. 176. 1/2" DIA. 1/2" DIA. 177. 1/2" DIA. 1/2" DIA. 178. 1/2" DIA. 1/2" DIA. 179. 1/2" DIA. 1/2" DIA. 180. 1/2" DIA. 1/2" DIA. 181. 1/2" DIA. 1/2" DIA. 182. 1/2" DIA. 1/2" DIA. 183. 1/2" DIA. 1/2" DIA. 184. 1/2" DIA. 1/2" DIA. 185. 1/2" DIA. 1/2" DIA. 186. 1/2" DIA. 1/2" DIA. 187. 1/2" DIA. 1/2" DIA. 188. 1/2" DIA. 1/2" DIA. 189. 1/2" DIA. 1/2" DIA. 190. 1/2" DIA. 1/2" DIA. 191. 1/2" DIA. 1/2" DIA. 192. 1/2" DIA. 1/2" DIA. 193. 1/2" DIA. 1/2" DIA. 194. 1/2" DIA. 1/2" DIA. 195. 1/2" DIA. 1/2" DIA. 196. 1/2" DIA. 1/2" DIA. 197. 1/2" DIA. 1/2" DIA. 198. 1/2" DIA. 1/2" DIA. 199. 1/2" DIA. 1/2" DIA. 200. 1/2" DIA. 1/2" DIA. 201. 1/2" DIA. 1/2" DIA. 202. 1/2" DIA. 1/2" DIA. 203. 1/2" DIA. 1/2" DIA. 204. 1/2" DIA. 1/2" DIA. 205. 1/2" DIA. 1/2" DIA. 206. 1/2" DIA. 1/2" DIA. 207. 1/2" DIA. 1/2" DIA. 208. 1/2" DIA. 1/2" DIA. 209. 1/2" DIA. 1/2" DIA. 210. 1/2" DIA. 1/2" DIA. 211. 1/2" DIA. 1/2" DIA. 212. 1/2" DIA. 1/2" DIA. 213. 1/2" DIA. 1/2" DIA. 214. 1/2" DIA. 1/2" DIA. 215. 1/2" DIA. 1/2" DIA. 216. 1/2" DIA. 1/2" DIA. 217. 1/2" DIA. 1/2" DIA. 218. 1/2" DIA. 1/2" DIA. 219. 1/2" DIA. 1/2" DIA. 220. 1/2" DIA. 1/2" DIA. 221. 1/2" DIA. 1/2" DIA. 222. 1/2" DIA. 1/2" DIA. 223. 1/2" DIA. 1/2" DIA. 224. 1/2" DIA. 1/2" DIA. 225. 1/2" DIA. 1/2" DIA. 226. 1/2" DIA. 1/2" DIA. 227. 1/2" DIA. 1/2" DIA. 228. 1/2" DIA. 1/2" DIA. 229. 1/2" DIA. 1/2" DIA. 230. 1/2" DIA. 1/2" DIA. 231. 1/2" DIA. 1/2" DIA. 232. 1/2" DIA. 1/2" DIA. 233. 1/2" DIA. 1/2" DIA. 234. 1/2" DIA. 1/2" DIA. 235. 1/2" DIA. 1/2" DIA. 236. 1/2" DIA. 1/2" DIA. 237. 1/2" DIA. 1/2" DIA. 238. 1/2" DIA. 1/2" DIA. 239. 1/2" DIA. 1/2" DIA. 240. 1/2" DIA. 1/2" DIA. 241. 1/2" DIA. 1/2" DIA. 242. 1/2" DIA. 1/2" DIA. 243. 1/2" DIA. 1/2" DIA. 244. 1/2" DIA. 1/2" DIA. 245. 1/2" DIA. 1/2" DIA. 246. 1/2" DIA. 1/2" DIA. 247. 1/2" DIA. 1/2" DIA. 248. 1/2" DIA. 1/2" DIA. 249. 1/2" DIA. 1/2" DIA. 250. 1/2" DIA. 1/2" DIA. 251. 1/2" DIA. 1/2" DIA. 252. 1/2" DIA. 1/2" DIA. 253. 1/2" DIA. 1/2" DIA. 254. 1/2" DIA. 1/2" DIA. 255. 1/2" DIA. 1/2" DIA. 256. 1/2" DIA. 1/2" DIA. 257. 1/2" DIA. 1/2" DIA. 258. 1/2" DIA. 1/2" DIA. 259. 1/2" DIA. 1/2" DIA. 260. 1/2" DIA. 1/2" DIA. 261. 1/2" DIA. 1/2" DIA. 262. 1/2" DIA. 1/2" DIA. 263. 1/2" DIA. 1/2" DIA. 264. 1/2" DIA. 1/2" DIA. 265. 1/2" DIA. 1/2" DIA. 266. 1/2" DIA. 1/2" DIA. 267. 1/2" DIA. 1/2" DIA. 268. 1/2" DIA. 1/2" DIA. 269. 1/2" DIA. 1/2" DIA. 270. 1/2" DIA. 1/2" DIA. 271. 1/2" DIA. 1/2" DIA. 272. 1/2" DIA. 1/2" DIA. 273. 1/2" DIA. 1/2" DIA. 274. 1/2" DIA. 1/2" DIA. 275. 1/2" DIA. 1/2" DIA. 276. 1/2" DIA. 1/2" DIA. 277. 1/2" DIA. 1/2" DIA. 278. 1/2" DIA. 1/2" DIA. 279. 1/2" DIA. 1/2" DIA. 280. 1/2" DIA. 1/2" DIA. 281. 1/2" DIA. 1/2" DIA. 282. 1/2" DIA. 1/2" DIA. 283. 1/2" DIA. 1/2" DIA. 284. 1/2" DIA. 1/2" DIA. 285. 1/2" DIA. 1/2" DIA. 286. 1/2" DIA. 1/2" DIA. 287. 1/2" DIA. 1/2" DIA. 288. 1/2" DIA. 1/2" DIA. 289. 1/2" DIA. 1/2" DIA. 290. 1/2" DIA. 1/2" DIA. 291. 1/2" DIA. 1/2" DIA. 292. 1/2" DIA. 1/2" DIA. 293. 1/2" DIA. 1/2" DIA. 294. 1/2" DIA. 1/2" DIA. 295. 1/2" DIA. 1/2" DIA. 296. 1/2" DIA. 1/2" DIA. 297. 1/2" DIA. 1/2" DIA. 298. 1/2" DIA. 1/2" DIA. 299. 1/2" DIA. 1/2" DIA. 300. 1/2" DIA. 1/2" DIA. 301. 1/2" DIA. 1/2" DIA. 302. 1/2" DIA. 1/2" DIA. 303. 1/2" DIA. 1/2" DIA. 304. 1/2" DIA. 1/2" DIA. 305. 1/2" DIA. 1/2" DIA. 306. 1/2" DIA. 1/2" DIA. 307. 1/2" DIA. 1/2" DIA. 308. 1/2" DIA. 1/2" DIA. 309. 1/2" DIA. 1/2" DIA. 310. 1/2" DIA. 1/2" DIA. 311. 1/2" DIA. 1/2" DIA. 312. 1/2" DIA. 1/2" DIA. 313. 1/2" DIA. 1/2" DIA. 314. 1/2" DIA. 1/2" DIA. 315. 1/2" DIA. 1/2" DIA. 316. 1/2" DIA. 1/2" DIA. 317. 1/2" DIA. 1/2" DIA. 318. 1/2" DIA. 1/2" DIA. 319. 1/2" DIA. 1/2" DIA. 320. 1/2" DIA. 1/2" DIA. 321. 1/2" DIA. 1/2" DIA. 322. 1/2" DIA. 1/2" DIA. 323. 1/2" DIA. 1/2" DIA. 324. 1/2" DIA. 1/2" DIA. 325. 1/2" DIA. 1/2" DIA. 326. 1/2" DIA. 1/2" DIA. 327. 1/2" DIA. 1/2" DIA. 328. 1/2" DIA. 1/2" DIA. 329. 1/2" DIA. 1/2" DIA. 330. 1/2" DIA. 1/2" DIA. 331. 1/2" DIA. 1/2" DIA. 332. 1/2" DIA. 1/2" DIA. 333. 1/2" DIA. 1/2" DIA. 334. 1/2" DIA. 1/2" DIA. 335. 1/2" DIA. 1/2" DIA. 336. 1/2" DIA. 1/2" DIA. 337. 1/2" DIA. 1/2" DIA. 338. 1/2" DIA. 1/2" DIA. 339. 1/2" DIA. 1/2" DIA. 340. 1/2" DIA. 1/2" DIA. 341. 1/2" DIA. 1/2" DIA. 342. 1/2" DIA. 1/2" DIA. 343. 1/2" DIA. 1/2" DIA. 344. 1/2" DIA. 1/2" DIA. 345. 1/2" DIA. 1/2" DIA. 346. 1/2" DIA. 1/2" DIA. 347. 1/2" DIA. 1/2" DIA. 348. 1/2" DIA. 1/2" DIA. 349. 1/2" DIA. 1/2" DIA. 350. 1/2" DIA. 1/2" DIA. 351. 1/2" DIA. 1/2" DIA. 352. 1/2" DIA. 1/2" DIA. 353. 1/2" DIA. 1/2" DIA. 354. 1/2" DIA. 1/2" DIA. 355. 1/2" DIA. 1/2" DIA. 356. 1/2" DIA. 1/2" DIA. 357. 1/2" DIA. 1/2" DIA. 358. 1/2" DIA. 1/2" DIA. 359. 1/2" DIA. 1/2" DIA. 360. 1/2" DIA. 1/2" DIA. 361. 1/2" DIA. 1/2" DIA. 362. 1/2" DIA. 1/2" DIA. 363. 1/2" DIA. 1/2" DIA. 364. 1/2" DIA. 1/2" DIA. 365. 1/2" DIA. 1/2" DIA. 366. 1/2" DIA. 1/2" DIA. 367. 1/2" DIA. 1/2" DIA. 368. 1/2" DIA. 1/2" DIA. 369. 1/2" DIA. 1/2" DIA. 370. 1/2" DIA. 1/2" DIA. 371. 1/2" DIA. 1/2" DIA. 372. 1/2" DIA. 1/2" DIA. 373. 1/2" DIA. 1/2" DIA. 374. 1/2" DIA. 1/2" DIA. 375. 1/2" DIA. 1/2" DIA. 376. 1/2" DIA. 1/2" DIA. 377. 1/2" DIA. 1/2" DIA. 378. 1/2" DIA. 1/2" DIA. 379. 1/2" DIA. 1/2" DIA. 380. 1/2" DIA. 1/2" DIA. 381. 1/2" DIA. 1/2" DIA. 382. 1/2" DIA. 1/2" DIA. 383. 1/2" DIA. 1/2" DIA. 384. 1/2" DIA. 1/2" DIA. 385. 1/2" DIA. 1/2" DIA. 386. 1/2" DIA. 1/2" DIA. 387. 1/2" DIA. 1/2" DIA. 388. 1/2" DIA. 1/2" DIA. 389. 1/2" DIA. 1/2" DIA. 390. 1/2" DIA. 1/2" DIA. 391. 1/2" DIA. 1/2" DIA. 392. 1/2" DIA. 1/2" DIA. 393. 1/2" DIA. 1/2" DIA. 394. 1/2" DIA. 1/2" DIA. 395. 1/2" DIA. 1/2" DIA. 396. 1/2" DIA. 1/2" DIA. 397. 1/2" DIA. 1/2" DIA. 398. 1/2" DIA. 1/2" DIA. 399. 1/2" DIA. 1/2" DIA. 400. 1/2" DIA. 1/2" DIA. 401. 1/2" DIA. 1/2" DIA. 402. 1/2" DIA. 1/2" DIA. 403. 1/2" DIA. 1/2" DIA. 404. 1/2" DIA. 1/2" DIA. 405. 1/2" DIA. 1/2" DIA. 406. 1/2" DIA. 1/2" DIA. 407. 1/2" DIA. 1/2" DIA. 408. 1/2" DIA. 1/2" DIA. 409. 1/2" DIA. 1/2" DIA. 410. 1/2" DIA. 1/2" DIA. 411. 1/2" DIA. 1/2" DIA. 412. 1/2" DIA. 1/2" DIA. 413. 1/2" DIA. 1/2" DIA. 414. 1/2" DIA. 1/2" DIA. 415. 1/2" DIA. 1/2" DIA. 416. 1/2" DIA. 1/2" DIA. 417. 1/2" DIA. 1/2" DIA. 418. 1/2" DIA. 1/2" DIA. 419. 1/2" DIA. 1/2" DIA. 420. 1/2" DIA. 1/2" DIA. 421. 1/2" DIA. 1/2" DIA. 422. 1/2" DIA. 1/2" DIA. 423. 1/2" DIA. 1/2" DIA. 424. 1/2" DIA. 1/2" DIA. 425. 1/2" DIA. 1/2" DIA. 426. 1/2" DIA. 1/2" DIA. 427. 1/2" DIA. 1/2" DIA. 428. 1/2" DIA. 1/2" DIA. 429. 1/2" DIA. 1/2" DIA. 430. 1/2" DIA. 1/2" DIA. 431. 1/2" DIA. 1/2" DIA. 432. 1/2" DIA. 1/2" DIA. 433. 1/2" DIA. 1/2" DIA. 434. 1/2" DIA. 1/2" DIA. 435. 1/2" DIA. 1/2" DIA. 436. 1/2" DIA. 1/2" DIA. 437. 1/2" DIA. 1/2" DIA. 438. 1/2" DIA. 1/2" DIA. 439. 1/2" DIA. 1/2" DIA. 440. 1/2" DIA. 1/2" DIA. 441. 1/2" DIA. 1/2" DIA. 442. 1/2" DIA. 1/2" DIA. 443. 1/2" DIA. 1/2" DIA. 444. 1/2" DIA. 1/2" DIA. 445. 1/2" DIA. 1/2" DIA. 446. 1/2" DIA. 1/2" DIA. 447. 1/2" DIA. 1/2" DIA. 448. 1/2" DIA. 1/2" DIA. 449. 1/2" DIA. 1/2" DIA. 450. 1/2" DIA. 1/2" DIA. 451. 1/2" DIA. 1/2" DIA. 452. 1/2" DIA. 1/2" DIA. 453. 1/2" DIA. 1/2" DIA. 454. 1/2" DIA. 1/2" DIA. 455. 1/2" DIA. 1/2" DIA. 456. 1/2" DIA. 1/2" DIA. 457. 1/2" DIA. 1/2" DIA. 458. 1/2" DIA. 1/2" DIA. 459. 1/2" DIA. 1/2" DIA. 460. 1/2" DIA. 1/2" DIA. 461. 1/2" DIA. 1/2" DIA. 462. 1/2" DIA. 1/2" DIA. 463. 1/2" DIA. 1/2" DIA. 464. 1/2" DIA. 1/2" DIA. 465. 1/2" DIA. 1/2" DIA. 466. 1/2" DIA. 1/2" DIA. 467. 1/2" DIA. 1/2" DIA. 4 |
|---|---|



CERTIFICATE



This is to certify that

Engineered Controls International, LLC

100 Rego Drive
Elon, NC 27244
United States of America

with the organizational units/sites as listed in the annex

has implemented and maintains a **Quality Management System**.

Scope:

The design and manufacture of valves, regulators and fittings for the L.P. Gas, Anhydrous Ammonia, LNG, and Compressed Gas Industries.

Through an audit, documented in a report, it was verified that the management system fulfills the requirements of the following standard:

ISO 9001 : 2008

| | |
|--------------------------------|---------------|
| Certificate registration no. | 10001523 QM08 |
| Date of original certification | 1994-10-04 |
| Date of certification | 2015-12-22 |
| Valid until | 2018-09-14 |



DQS Inc.

Ganesh Rao
Managing Director





Annex to Certificate
Registration No. 10001523 QM08

Engineered Controls International, LLC

100 Rego Drive
Elon, NC 27244
United States of America

Location

10003889
Engineered Controls International, LLC
3181 Lear Drive
Burlington, NC 27215
United States of America

10003890
Engineered Controls International, LLC
911 Industrial Drive S.W.
Conover, NC 28613
United States of America





Saskatchewan
Municipal
Government

Saskatchewan

Procedural Services
330 - 1851 Victoria Avenue
Regina, Saskatchewan
S4P 3V7

787-4509

April 23, 1998

Re: Fittings Registration

The Province of Saskatchewan will be participating with Quebec, Manitoba and the Canadian Standards Association (CSA) in a pilot project for the registration of fittings. We will recognize registrations done by CSA and accept such fittings for use in Saskatchewan.

The letters CSA will be applied as a prefix to the CRN to indicate which fittings have been registered in this manner. I would appreciate if you could inform your clients of this additional marking requirement.

You may also inform your clients that fittings registered by CSA are accepted for use in Saskatchewan.

Yours truly,

A handwritten signature in black ink, appearing to read 'N. Surtees'.

N. Surtees, P. Eng.
Executive Director