



To:	TSSA	From:	Janet Townsend
Company:	Engineered Controls International, LLC.	Phone:	416-747-4291
Pages:	8	Location:	Toronto
Our File:	ANR-4428	Date:	April 20, 2017

Your File: 2018350

Subject: Request for Design Registration

Dear Ms. Francis,

CSA has reviewed the documentation submitted by TSSA on behalf of Engineered Controls International, LLC.

These fittings have been registered by CSA for the Province of Québec. In accordance with an agreement between CSA, the Provinces of Québec and Saskatchewan; this registration is recognized by Quebec and Saskatchewan. These fittings are acceptable for use in these Provinces.

The letters CSA will be applied as a prefix to the CRN indicate which fittings have been registered in this manner. A copy of the stamped Statutory Declaration is attached.

The CRN is CSA-0H19081.56.

A copy of the Statutory Declaration with an original stamp affixed will be forwarded to you along with our invoice by regular mail.

Yours truly

A handwritten signature in blue ink that reads 'Janet Townsend'.

Janet Townsend
Program Manager
CSA Group

**STATUTORY DECLARATION
Registration of Fittings**

I, Chad Thomas, V.P of Engineering
(name of applicant) (position title) (must be in a position of authority)
of Engineered Controls International, LLC
(name of manufacturer)
located at 100 Rego Drive, Elon, NC 27244
(plant address)

In this space, show facsimile of manufacturer's logo or trademark as it will appear on the fitting.

REGO®

do solemnly declare that the fittings listed hereunder, which are subject to the Safety Codes Act (check one)

☒ comply with the requirements of ASME B31.1 which specifies the dimensions,
(title of recognized North American Standard)

materials of construction, pressure/temperature ratings and identification marking of the fittings, or
☐ are not covered by the provisions of a recognized North American standard and are therefore manufactured to comply with _____ as supported by the attached
(title of code of construction or other applicable document)
data which identifies the dimensions, materials of construction, pressure/temperature ratings and the basis for such ratings, and the marking of the fittings for identification.

I further declare that the manufacture of these fittings is controlled by a quality control program which has been verified by the following authority, ISO 9001 / UL INC as being suitable for the manufacture of these fittings to the stated standard. The fittings covered by this declaration, for which I seek registration, are

Category "H"
(brief description of fittings)

In support of this application, the following information, calculations and/or test data are attached

See attached list.

Note: See attachment as the scope of registration.

DECLARED before me at Elon in the County of Alamance, NC
(city) (province or state)
this 16th day of December, 2016
(Month) (Year)

(print) Marisa E. Elliott
(a Commissioner of Oaths or Notary Public)

(sign) Marisa E. Elliott
(a Commissioner of Oaths or Notary Public)

Chad M. Thomas
(signature of applicant)

**MARISA E. ELLIOTT
NOTARY PUBLIC
ALAMANCE COUNTY
NORTH CAROLINA**

my commission expires 8/31/2021

For ABSA Office Use Only:

NOTES:

To the best of my knowledge and belief, the application meets the requirements of the Safety Codes Act and CSA Standard B51, Clause 4.2, and is accepted for registration in Category H

Registration Number: CSA-OH19081.56

A. BANWATT
(Signature of the Administrator/SCO)

Date Registered: APRIL 12 2017

Expiry Date: JAN 12 2021

The information you provide is necessary only for the administration of the programs as required by the Alberta Safety Codes Act and Regulations, 2014 Pressure Equipment Discipline.

REGISTERED

CRN: CSA-OH19081.56

Registration Process administered by
CSA Group per CSA B51

REGISTERED



CRN: CSA-OH19081.56

Registration Process administered by
CSA Group per CSA B51

Technical Review performed per CSA B51
Performed by: ANRIC Enterprises Inc.

Signed: *ANRIC Enterprises Inc.*

Date: 12 April, 2017




CERTIFIED
TRUE COPY

Date: 2/Feb/17

Signature: *Cecylia Garbacz*

Cecylia Garbacz, a Commissioner, etc.,
City of Toronto, for the Technical
Standards & Safety Authority.
Expires June 17, 2017.

Category	System Number	Description	Drawing Number	Body Number	Body Material	Service Pressure
H	MVESD	Vent Assembly	B-94071F	B-9408ST-1	Bronze Cast Alloy, UNS C92200, ASTM B61	600
			MVESD-3	MVESD -3	FC Brass, UNS C36000, ASTM B16	600
			1337-2	1337-2	Stainless Steel Pipe, ASTM A249, TP304L	600
			1337-57	1337-57	Stainless Steel Pipe, ASTM A312, TP304L	600
			1337B-22 SER	1337B-22C	Stainless Steel Pipe, ASTM A312, TP304L	600

 **CSA Group** / OF-2

ATTACHMENT TO

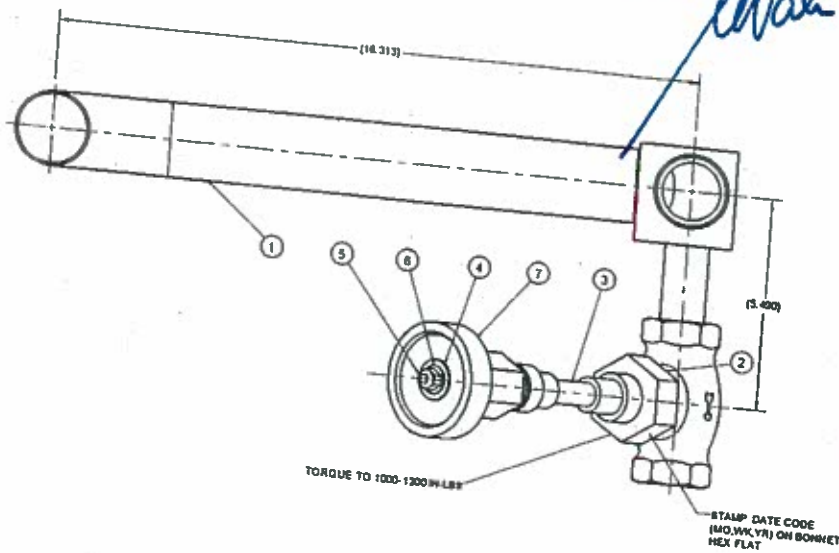
C.R.N. CSA-CH19081.56

Signed: [Signature]

178 Rexdale Boulevard, Toronto, ON Canada M9W 1R3

THIS IS PART OF
CRN CH19081.5
 Technical Standards & Safety Authority
 Boilers & Pressure Vessels
 Safety Program

[Signature] Jan 12/17



Safety Plog
 Wale JAN 12/17
 NOTES:
 1. CLEAN ALL CO
 2. TEST

1. CLEAN ALL COMPONENTS PER B-11550-400 FOR OXYGEN SERVICE JUST PRIOR TO ASSEMBLY
2. TEST PER 840-100.
3. ATTACH TORQUE TAG TO HANDWHEEL/STEM
4. ASSEMBLY MUST FIT CHART GOING-GO FIXTURE #FID0008 PRIOR TO SHIPPING.
5. ATTACH CLOSURES TO ALL END CONNECTIONS TO PROTECT AND SEAL OPENINGS
6. SEAL PRODUCT IN POLYBAG AND INCLUDE OXYGEN CLEAN INFORMATION IN OR ON BAG.
7. REFERENCE CHART DRAWING NUMBER B-14121558

9	1	TAG, TORQUE (11003 (NOT SHOWN)	SEE NOTE 3	8-8403-60C
8	1	SEAT DISC ASSY (NOT SHOWN)		8-8408-7
7	1	HANDWHEEL (ALVER)		2507-16C
6	1	WASHER		45002H
5	1	NUT, LOCK		7505A-1358
4	1	TAG, VAPOR VENT HCY-12		11873-B07
3	1	NUT, UPPER ASSEMBLY REPAIR (UNTESTED)		8-8408-K17U
2	1	GASKET		8-8408-1
1	1	BRAZED ASSY		SEE TABLE

ITEM	QTY	TITLE	PART NUMBER
T. TUCKLE	5-23-12	ENGINEERING SPECIFICATIONS 1. 1 DBC 4-8 2. 1 DBC 4-8 3. 1 DBC 4-8 4. 1 DBC 4-8 5. 1 DBC 4-8 6. 1 DBC 4-8 7. 1 DBC 4-8 8. 1 DBC 4-8 9. 1 DBC 4-8 10. 1 DBC 4-8 11. 1 DBC 4-8 12. 1 DBC 4-8 13. 1 DBC 4-8 14. 1 DBC 4-8 15. 1 DBC 4-8 16. 1 DBC 4-8 17. 1 DBC 4-8 18. 1 DBC 4-8 19. 1 DBC 4-8 20. 1 DBC 4-8 21. 1 DBC 4-8 22. 1 DBC 4-8 23. 1 DBC 4-8 24. 1 DBC 4-8 25. 1 DBC 4-8 26. 1 DBC 4-8 27. 1 DBC 4-8 28. 1 DBC 4-8 29. 1 DBC 4-8 30. 1 DBC 4-8 31. 1 DBC 4-8 32. 1 DBC 4-8 33. 1 DBC 4-8 34. 1 DBC 4-8 35. 1 DBC 4-8 36. 1 DBC 4-8 37. 1 DBC 4-8 38. 1 DBC 4-8 39. 1 DBC 4-8 40. 1 DBC 4-8 41. 1 DBC 4-8 42. 1 DBC 4-8 43. 1 DBC 4-8 44. 1 DBC 4-8 45. 1 DBC 4-8 46. 1 DBC 4-8 47. 1 DBC 4-8 48. 1 DBC 4-8 49. 1 DBC 4-8 50. 1 DBC 4-8 51. 1 DBC 4-8 52. 1 DBC 4-8 53. 1 DBC 4-8 54. 1 DBC 4-8 55. 1 DBC 4-8 56. 1 DBC 4-8 57. 1 DBC 4-8 58. 1 DBC 4-8 59. 1 DBC 4-8 60. 1 DBC 4-8 61. 1 DBC 4-8 62. 1 DBC 4-8 63. 1 DBC 4-8 64. 1 DBC 4-8 65. 1 DBC 4-8 66. 1 DBC 4-8 67. 1 DBC 4-8 68. 1 DBC 4-8 69. 1 DBC 4-8 70. 1 DBC 4-8 71. 1 DBC 4-8 72. 1 DBC 4-8 73. 1 DBC 4-8 74. 1 DBC 4-8 75. 1 DBC 4-8 76. 1 DBC 4-8 77. 1 DBC 4-8 78. 1 DBC 4-8 79. 1 DBC 4-8 80. 1 DBC 4-8 81. 1 DBC 4-8 82. 1 DBC 4-8 83. 1 DBC 4-8 84. 1 DBC 4-8 85. 1 DBC 4-8 86. 1 DBC 4-8 87. 1 DBC 4-8 88. 1 DBC 4-8 89. 1 DBC 4-8 90. 1 DBC 4-8 91. 1 DBC 4-8 92. 1 DBC 4-8 93. 1 DBC 4-8 94. 1 DBC 4-8 95. 1 DBC 4-8 96. 1 DBC 4-8 97. 1 DBC 4-8 98. 1 DBC 4-8 99. 1 DBC 4-8 100. 1 DBC 4-8 101. 1 DBC 4-8 102. 1 DBC 4-8 103. 1 DBC 4-8 104. 1 DBC 4-8 105. 1 DBC 4-8 106. 1 DBC 4-8 107. 1 DBC 4-8 108. 1 DBC 4-8 109. 1 DBC 4-8 110. 1 DBC 4-8 111. 1 DBC 4-8 112. 1 DBC 4-8 113. 1 DBC 4-8 114. 1 DBC 4-8 115. 1 DBC 4-8 116. 1 DBC 4-8 117. 1 DBC 4-8 118. 1 DBC 4-8 119. 1 DBC 4-8 120. 1 DBC 4-8 121. 1 DBC 4-8 122. 1 DBC 4-8 123. 1 DBC 4-8 124. 1 DBC 4-8 125. 1 DBC 4-8 126. 1 DBC 4-8 127. 1 DBC 4-8 128. 1 DBC 4-8 129. 1 DBC 4-8 130. 1 DBC 4-8 131. 1 DBC 4-8 132. 1 DBC 4-8 133. 1 DBC 4-8 134. 1 DBC 4-8 135. 1 DBC 4-8 136. 1 DBC 4-8 137. 1 DBC 4-8 138. 1 DBC 4-8 139. 1 DBC 4-8 140. 1 DBC 4-8 141. 1 DBC 4-8 142. 1 DBC 4-8 143. 1 DBC 4-8 144. 1 DBC 4-8 145. 1 DBC 4-8 146. 1 DBC 4-8 147. 1 DBC 4-8 148. 1 DBC 4-8 149. 1 DBC 4-8 150. 1 DBC 4-8 151. 1 DBC 4-8 152. 1 DBC 4-8 153. 1 DBC 4-8 154. 1 DBC 4-8 155. 1 DBC 4-8 156. 1 DBC 4-8 157. 1 DBC 4-8 158. 1 DBC 4-8 159. 1 DBC 4-8 160. 1 DBC 4-8 161. 1 DBC 4-8 162. 1 DBC 4-8 163. 1 DBC 4-8 164. 1 DBC 4-8 165. 1 DBC 4-8 166. 1 DBC 4-8 167. 1 DBC 4-8 168. 1 DBC 4-8 169. 1 DBC 4-8 170. 1 DBC 4-8 171. 1 DBC 4-8 172. 1 DBC 4-8 173. 1 DBC 4-8 174. 1 DBC 4-8 175. 1 DBC 4-8 176. 1 DBC 4-8 177. 1 DBC 4-8 178. 1 DBC 4-8 179. 1 DBC 4-8 180. 1 DBC 4-8 181. 1 DBC 4-8 182. 1 DBC 4-8 183. 1 DBC 4-8 184. 1 DBC 4-8 185. 1 DBC 4-8 186. 1 DBC 4-8 187. 1 DBC 4-8 188. 1 DBC 4-8 189. 1 DBC 4-8 190. 1 DBC 4-8 191. 1 DBC 4-8 192. 1 DBC 4-8 193. 1 DBC 4-8 194. 1 DBC 4-8 195. 1 DBC 4-8 196. 1 DBC 4-8 197. 1 DBC 4-8 198. 1 DBC 4-8 199. 1 DBC 4-8 200. 1 DBC 4-8 201. 1 DBC 4-8 202. 1 DBC 4-8 203. 1 DBC 4-8 204. 1 DBC 4-8 205. 1 DBC 4-8 206. 1 DBC 4-8 207. 1 DBC 4-8 208. 1 DBC 4-8 209. 1 DBC 4-8 210. 1 DBC 4-8 211. 1 DBC 4-8 212. 1 DBC 4-8 213. 1 DBC 4-8 214. 1 DBC 4-8 215. 1 DBC 4-8 216. 1 DBC 4-8 217. 1 DBC 4-8 218. 1 DBC 4-8 219. 1 DBC 4-8 220. 1 DBC 4-8 221. 1 DBC 4-8 222. 1 DBC 4-8 223. 1 DBC 4-8 224. 1 DBC 4-8 225. 1 DBC 4-8 226. 1 DBC 4-8 227. 1 DBC 4-8 228. 1 DBC 4-8 229. 1 DBC 4-8 230. 1 DBC 4-8 231. 1 DBC 4-8 232. 1 DBC 4-8 233. 1 DBC 4-8 234. 1 DBC 4-8 235. 1 DBC 4-8 236. 1 DBC 4-8 237. 1 DBC 4-8 238. 1 DBC 4-8 239. 1 DBC 4-8 240. 1 DBC 4-8 241. 1 DBC 4-8 242. 1 DBC 4-8 243. 1 DBC 4-8 244. 1 DBC 4-8 245. 1 DBC 4-8 246. 1 DBC 4-8 247. 1 DBC 4-8 248. 1 DBC 4-8 249. 1 DBC 4-8 250. 1 DBC 4-8 251. 1 DBC 4-8 252. 1 DBC 4-8 253. 1 DBC 4-8 254. 1 DBC 4-8 255. 1 DBC 4-8 256. 1 DBC 4-8 257. 1 DBC 4-8 258. 1 DBC 4-8 259. 1 DBC 4-8 260. 1 DBC 4-8 261. 1 DBC 4-8 262. 1 DBC 4-8 263. 1 DBC 4-8 264. 1 DBC 4-8 265. 1 DBC 4-8 266. 1 DBC 4-8 267. 1 DBC 4-8 268. 1 DBC 4-8 269. 1 DBC 4-8 270. 1 DBC 4-8 271. 1 DBC 4-8 272. 1 DBC 4-8 273. 1 DBC 4-8 274. 1 DBC 4-8 275. 1 DBC 4-8 276. 1 DBC 4-8 277. 1 DBC 4-8 278. 1 DBC 4-8 279. 1 DBC 4-8 280. 1 DBC 4-8 281. 1 DBC 4-8 282. 1 DBC 4-8 283. 1 DBC 4-8 284. 1 DBC 4-8 285. 1 DBC 4-8 286. 1 DBC 4-8 287. 1 DBC 4-8 288. 1 DBC 4-8 289. 1 DBC 4-8 290. 1 DBC 4-8 291. 1 DBC 4-8 292. 1 DBC 4-8 293. 1 DBC 4-8 294. 1 DBC 4-8 295. 1 DBC 4-8 296. 1 DBC 4-8 297. 1 DBC 4-8 298. 1 DBC 4-8 299. 1 DBC 4-8 300. 1 DBC 4-8 301. 1 DBC 4-8 302. 1 DBC 4-8 303. 1 DBC 4-8 304. 1 DBC 4-8 305. 1 DBC 4-8 306. 1 DBC 4-8 307. 1 DBC 4-8 308. 1 DBC 4-8 309. 1 DBC 4-8 310. 1 DBC 4-8 311. 1 DBC 4-8 312. 1 DBC 4-8 313. 1 DBC 4-8 314. 1 DBC 4-8 315. 1 DBC 4-8 316. 1 DBC 4-8 317. 1 DBC 4-8 318. 1 DBC 4-8 319. 1 DBC 4-8 320. 1 DBC 4-8 321. 1 DBC 4-8 322. 1 DBC 4-8 323. 1 DBC 4-8 324. 1 DBC 4-8 325. 1 DBC 4-8 326. 1 DBC 4-8 327. 1 DBC 4-8 328. 1 DBC 4-8 329. 1 DBC 4-8 330. 1 DBC 4-8 331. 1 DBC 4-8 332. 1 DBC 4-8 333. 1 DBC 4-8 334. 1 DBC 4-8 335. 1 DBC 4-8 336. 1 DBC 4-8 337. 1 DBC 4-8 338. 1 DBC 4-8 339. 1 DBC 4-8 340. 1 DBC 4-8 341. 1 DBC 4-8 342. 1 DBC 4-8 343. 1 DBC 4-8 344. 1 DBC 4-8 345. 1 DBC 4-8 346. 1 DBC 4-8 347. 1 DBC 4-8 348. 1 DBC 4-8 349. 1 DBC 4-8 350. 1 DBC 4-8 351. 1 DBC 4-8 352. 1 DBC 4-8 353. 1 DBC 4-8 354. 1 DBC 4-8 355. 1 DBC 4-8 356. 1 DBC 4-8 357. 1 DBC 4-8 358. 1 DBC 4-8 359. 1 DBC 4-8 360. 1 DBC 4-8 361. 1 DBC 4-8 362. 1 DBC 4-8 363. 1 DBC 4-8 364. 1 DBC 4-8 365. 1 DBC 4-8 366. 1 DBC 4-8 367. 1 DBC 4-8 368. 1 DBC 4-8 369. 1 DBC 4-8 370. 1 DBC 4-8 371. 1 DBC 4-8 372. 1 DBC 4-8 373. 1 DBC 4-8 374. 1 DBC 4-8 375. 1 DBC 4-8 376. 1 DBC 4-8 377. 1 DBC 4-8 378. 1 DBC 4-8 379. 1 DBC 4-8 380. 1 DBC 4-8 381. 1 DBC 4-8 382. 1 DBC 4-8 383. 1 DBC 4-8 384. 1 DBC 4-8 385. 1 DBC 4-8 386. 1 DBC 4-8 387. 1 DBC 4-8 388. 1 DBC 4-8 389. 1 DBC 4-8 390. 1 DBC 4-8 391. 1 DBC 4-8 392. 1 DBC 4-8 393. 1 DBC 4-8 394. 1 DBC 4-8 395. 1 DBC 4-8 396. 1 DBC 4-8 397. 1 DBC 4-8 398. 1 DBC 4-8 399. 1 DBC 4-8 400. 1 DBC 4-8 401. 1 DBC 4-8 402. 1 DBC 4-8 403. 1 DBC 4-8 404. 1 DBC 4-8 405. 1 DBC 4-8 406. 1 DBC 4-8 407. 1 DBC 4-8 408. 1 DBC 4-8 409. 1 DBC 4-8 410. 1 DBC 4-8 411. 1 DBC 4-8 412. 1 DBC 4-8 413. 1 DBC 4-8 414. 1 DBC 4-8 415. 1 DBC 4-8 416. 1 DBC 4-8 417. 1 DBC 4-8 418. 1 DBC 4-8 419. 1 DBC 4-8 420. 1 DBC 4-8 421. 1 DBC 4-8 422. 1 DBC 4-8 423. 1 DBC 4-8 424. 1 DBC 4-8 425. 1 DBC 4-8 426. 1 DBC 4-8 427. 1 DBC 4-8 428. 1 DBC 4-8 429. 1 DBC 4-8 430. 1 DBC 4-8 431. 1 DBC 4-8 432. 1 DBC 4-8 433. 1 DBC 4-8 434. 1 DBC 4-8 435. 1 DBC 4-8 436. 1 DBC 4-8 437. 1 DBC 4-8 438. 1 DBC 4-8 439. 1 DBC 4-8 440. 1 DBC 4-8 441. 1 DBC 4-8 442. 1 DBC 4-8 443. 1 DBC 4-8 444. 1 DBC 4-8 445. 1 DBC 4-8 446. 1 DBC 4-8 447. 1 DBC 4-8 448. 1 DBC 4-8 449. 1 DBC 4-8 450. 1 DBC 4-8 451. 1 DBC 4-8 452. 1 DBC 4-8 453. 1 DBC 4-8 454. 1 DBC 4-8 455. 1 DBC 4-8 456. 1 DBC 4-8 457. 1 DBC 4-8 458. 1 DBC 4-8 459. 1 DBC 4-8 460. 1 DBC 4-8 461. 1 DBC 4-8 462. 1 DBC 4-8 463. 1 DBC 4-8 464. 1 DBC 4-8 465. 1 DBC 4-8 466. 1 DBC 4-8 467. 1 DBC 4-8 468. 1 DBC 4-8 469. 1 DBC 4-8 470. 1 DBC 4-8 471. 1 DBC 4-8 472. 1 DBC 4-8 473. 1 DBC 4-8 474. 1 DBC 4-8 475. 1 DBC 4-8 476. 1 DBC 4-8 477. 1 DBC 4-8 478. 1 DBC 4-8 479. 1 DBC 4-8 480. 1 DBC 4-8 481. 1 DBC 4-8 482. 1 DBC 4-8 483. 1 DBC 4-8 484. 1 DBC 4-8 485. 1 DBC 4-8 486. 1 DBC 4-8 487. 1 DBC 4-8 488. 1 DBC 4-8 489. 1 DBC 4-8 490. 1 DBC 4-8 491. 1 DBC 4-8 492. 1 DBC 4-8 493. 1 DBC 4-8 494. 1 DBC 4-8 495. 1 DBC 4-8 496. 1 DBC 4-8 497. 1 DBC 4-8 498. 1 DBC 4-8 499. 1 DBC 4-8 500. 1 DBC 4-8 501. 1 DBC 4-8 502. 1 DBC 4-8 503. 1 DBC 4-8 504. 1 DBC 4-8 505. 1 DBC 4-8 506. 1 DBC 4-8 507. 1 DBC 4-8 508. 1 DBC 4-8 509. 1 DBC 4-8 510. 1 DBC 4-8 511. 1 DBC 4-8 512. 1 DBC 4-8 513. 1 DBC 4-8 514. 1 DBC 4-8 515. 1 DBC 4-8 516. 1 DBC 4-8 517. 1 DBC 4-8 518. 1 DBC 4-8 519. 1 DBC 4-8 520. 1 DBC 4-8 521. 1 DBC 4-8 522. 1 DBC 4-8 523. 1 DBC 4-8 524. 1 DBC 4-8 525. 1 DBC 4-8 526. 1 DBC 4-8 527. 1 DBC 4-8 528. 1 DBC 4-8 529. 1 DBC 4-8 530. 1 DBC 4-8 531. 1 DBC 4-8 532. 1 DBC 4-8 533. 1 DBC 4-8 534. 1 DBC 4-8 535. 1 DBC 4-8 536. 1 DBC 4-8 537. 1 DBC 4-8 538. 1 DBC 4-8 539. 1 DBC 4-8 540. 1 DBC 4-8 541. 1 DBC 4-8 542. 1 DBC 4-8 543. 1 DBC 4-8 544. 1 DBC 4-8 545. 1 DBC 4-8 546. 1 DBC 4-8 547. 1 DBC 4-8 548. 1 DBC 4-8 549. 1 DBC 4-8 550. 1 DBC 4-8 551. 1 DBC 4-8 552. 1 DBC 4-8 553. 1 DBC 4-8 554. 1 DBC 4-8 555. 1 DBC 4-8 556. 1 DBC 4-8 557. 1 DBC 4-8 558. 1 DBC 4-8 559. 1 DBC 4-8 560. 1 DBC 4-8 561. 1 DBC 4-8 562. 1 DBC 4-8 563. 1 DBC 4-8 564. 1 DBC 4-8 565. 1 DBC 4-8 566. 1 DBC 4-8 567. 1 DBC 4-8 568. 1 DBC 4-8 569. 1 DBC 4-8 570. 1 DBC 4-8 571. 1 DBC 4-8 572. 1 DBC 4-8 573. 1 DBC 4-8 574. 1 DBC 4-8 575. 1 DBC 4-8 576. 1 DBC 4-8 577. 1 DBC 4-8 578. 1 DBC 4-8 579. 1 DBC 4-8 580. 1 DBC 4-8 581. 1 DBC 4-8 582. 1 DBC 4-8 583. 1 DBC 4-8 584. 1 DBC 4-8 585. 1 DBC 4-8 586. 1 DBC 4-8 587. 1 DBC 4-8 588. 1 DBC 4-8 589. 1 DBC 4-8 590. 1 DBC 4-8 591. 1 DBC 4-8 592. 1 DBC 4-8 593. 1 DBC 4-8 594. 1 DBC 4-8 595. 1 DBC 4-8 596. 1 DBC 4-8 597. 1 DBC 4-8 598. 1 DBC 4-8 599. 1 DBC 4-8 600. 1 DBC 4-8 601. 1 DBC 4-8 602. 1 DBC 4-8 603. 1 DBC 4-8 604. 1 DBC 4-8 605. 1 DBC 4-8 606. 1 DBC 4-8 607. 1 DBC 4-8 608. 1 DBC 4-8 609. 1 DBC 4-8 610. 1 DBC 4-8 611. 1 DBC 4-8 612. 1 DBC 4-8 613. 1 DBC 4-8 614. 1 DBC 4-8 615. 1 DBC 4-8 616. 1 DBC 4-8 617. 1 DBC 4-8 618. 1 DBC 4-8 619. 1 DBC 4-8 620. 1 DBC 4-8 621. 1 DBC 4-8 622. 1 DBC 4-8 623. 1 DBC 4-8 624. 1 DBC 4-8 625. 1 DBC 4-8 626. 1 DBC 4-8 627. 1 DBC 4-8 628. 1 DBC 4-8 629. 1 DBC 4-8 630. 1 DBC 4-8 631. 1 DBC 4-8 632. 1 DBC 4-8 633. 1 DBC 4-8 634. 1 DBC 4-8 635. 1 DBC 4-8 636. 1 DBC 4-8 637. 1 DBC 4-8 638. 1 DBC 4-8 639. 1 DBC 4-8 640. 1 DBC 4-8 641. 1 DBC 4-8 642. 1 DBC 4-8 643. 1 DBC 4-8 644. 1 DBC 4-8 645. 1 DBC 4-8 646. 1 DBC 4-8 647. 1 DBC 4-8 648. 1 DBC 4-8 649. 1 DBC 4-8 650. 1 DBC 4-8 651. 1 DBC 4-8 652. 1 DBC 4-8 653. 1 DBC 4-8 654. 1 DBC 4-8 655. 1 DBC 4-8 656. 1 DBC 4-8 657. 1 DBC 4-8 658. 1 DBC 4-8 659. 1 DBC 4-8 660. 1 DBC 4-8 661. 1 DBC 4-8 662. 1 DBC 4-8 663. 1 DBC 4-8 664. 1 DBC 4-8 665. 1 DBC 4-8 666. 1 DBC 4-8 667. 1 DBC 4-8 668. 1 DBC 4-8 669. 1 DBC 4-8 670. 1 DBC 4-8 671. 1 DBC 4-8 672. 1 DBC 4-8 673. 1 DBC 4-8 674. 1 DBC 4-8 675. 1 DBC 4-8 676. 1 DBC 4-8 677. 1 DBC 4-8 678. 1 DBC 4-8 679. 1 DBC 4-8 680. 1 DBC 4-8 681. 1 DBC 4-8 682. 1 DBC 4-8 683. 1 DBC 4-8 684. 1 DBC 4-8 685. 1 DBC 4-8 686. 1 DBC 4-8 687. 1 DBC 4-8 688. 1 DBC 4-8 689. 1 DBC 4-8 690. 1 DBC 4-8 691. 1 DBC 4-8 692. 1 DBC 4-8 693. 1 DBC 4-8 694. 1 DBC 4-8 695. 1 DBC 4-8 696. 1 DBC 4-8 697. 1 DBC 4-8 698. 1 DBC 4-8 699. 1 DBC 4-8 700. 1 DBC 4-8 701. 1 DBC 4-8 702. 1 DBC 4-8 703. 1 DBC 4-8 704. 1 DBC 4-8 705. 1 DBC 4-8 706. 1 DBC 4-8 707. 1 DBC 4-8 708. 1 DBC 4-8 709. 1 DBC 4-8 710. 1 DBC 4-8 711. 1 DBC 4-8 712. 1 DBC 4-8 713. 1 DBC 4-8 714. 1 DBC 4-8 715. 1 DBC 4-8 716. 1 DBC 4-8 717. 1 DBC 4-8 718. 1 DBC 4-8 719. 1 DBC 4-8 720. 1 DBC 4-8 721. 1 DBC 4-8 722. 1 DBC 4-8 723. 1 DBC 4-8 724. 1 DBC 4-8 725. 1 DBC 4-8 726. 1 DBC 4-8 727. 1 DBC 4-8 728. 1 DBC 4-8 729. 1 DBC 4-8 730. 1 DBC 4-8 731. 1 DBC 4-8 732. 1 DBC 4-8 733. 1 DBC 4-8 734. 1 DBC 4-8 735. 1 DBC 4-8 736. 1 DBC 4-8 737. 1 DBC 4-8 738. 1 DBC 4-8 739. 1 DBC 4-8 740. 1 DBC 4-8 741. 1 DBC 4-8 742. 1 DBC 4-8 743. 1 DBC 4-8 744. 1 DBC 4-8 745. 1 DBC 4-8 746. 1 DBC 4-8 747. 1 DBC 4-8 748. 1 DBC 4-8 749. 1 DBC 4-8 750. 1 DBC 4-8 751. 1 DBC 4-8 752. 1 DBC 4-8 753. 1 DBC 4-8 754. 1 DBC 4-8 755. 1 DBC 4-8 756. 1 DBC 4-8 757. 1 DBC 4-8 758. 1 DBC 4-8 759. 1 DBC 4-8 760. 1 DBC 4-8 761. 1 DBC 4-8 762. 1 DBC 4-8 763. 1 DBC 4-8 764. 1 DBC 4-8 765. 1 DBC 4-8 766. 1 DBC 4-8 767. 1 DBC 4-8 768. 1 DBC 4-8 769. 1 DBC 4-8 770. 1 DBC 4-8 771. 1 DBC 4-8 772. 1 DBC 4-8 773. 1 DBC 4-8 774. 1 DBC 4-8 775. 1 DBC 4-8 776. 1 DBC 4-8 777. 1 DBC 4-8 778. 1 DBC 4-8 779. 1 DBC 4-8 780. 1 DBC 4-8 781. 1 DBC 4-8 782. 1 DBC 4-8 783. 1 DBC 4-8 784. 1 DBC 4-8 785. 1 DBC 4-8 786. 1 DBC 4-8 787. 1 DBC 4-8 788. 1 DBC 4-8 789. 1 DBC 4-8 790. 1 DBC 4-8 791. 1 DBC 4-8 792. 1 DBC 4-8 793. 1 DBC 4-8 794. 1 DBC 4-8 795. 1 DBC 4-8 796. 1 DBC 4-8 797. 1 DBC 4-8 798. 1 DBC 4-8 799. 1 DBC 4-8 800. 1 DBC 4-8 801. 1 DBC 4-8 802. 1 DBC 4-8 803. 1 DBC 4-8 804. 1 DBC 4-8 805. 1 DBC 4-8 806. 1 DBC 4-8 807. 1 DBC 4-8 808. 1 DBC 4-8 809. 1 DBC 4-8 810. 1 DBC 4-8 811. 1 DBC 4-8 812. 1 DBC 4-8 813. 1 DBC 4-8 814. 1 DBC 4-8 815. 1 DBC 4-8 816. 1 DBC 4-8 817. 1 DBC 4-8 818. 1 DBC 4-8 819. 1 DBC 4-8 820. 1 DBC 4-8 821. 1 DBC 4-8 822. 1 DBC 4-8 823. 1 DBC 4-8 824. 1 DBC 4-8 825. 1 DBC 4-8 826. 1 DBC 4-8 827. 1 DBC 4-8 828. 1 DBC 4-8 829. 1 DBC 4-8 830. 1 DBC 4-8 831. 1 DBC 4-8 832. 1 DBC 4-8 833. 1 DBC 4-8 834. 1 DBC 4-8 835. 1 DBC 4-8 836. 1 DBC 4-8 837. 1 DBC 4-8 838. 1 DBC 4-8 839. 1 DBC 4-8 840. 1 DBC 4-8 841. 1 DBC 4-8 842. 1 DBC 4-8 843. 1 DBC 4-8 844. 1 DBC 4-8 845. 1 DBC 4-8 846. 1 DBC 4-8 847. 1 DBC 4-8 848. 1 DBC 4-8 849. 1 DBC 4-8 850. 1 DBC 4-8 851. 1 DBC 4-	



CERTIFICATE



This is to certify that

Engineered Controls International, LLC

100 Rego Drive
Elon, NC 27244
United States of America

with the organizational units/sites as listed in the annex

has implemented and maintains a **Quality Management System**.

Scope:

The design and manufacture of valves, regulators and fittings for the L.P. Gas, Anhydrous Ammonia, LNG, and Compressed Gas Industries.

Through an audit, documented in a report, it was verified that the management system fulfills the requirements of the following standard:

ISO 9001 : 2008

Certificate registration no.	10001523 QM08
Date of original certification	1994-10-04
Date of certification	2015-12-22
Valid until	2018-09-14



DQS Inc.

Ganesh Rao
Managing Director



Annex to Certificate
Registration No. 10001523 QM08

Engineered Controls International, LLC

100 Rego Drive
Elon, NC 27244
United States of America

Location

10003889
Engineered Controls International, LLC
3181 Lear Drive
Burlington, NC 27215
United States of America

10003890
Engineered Controls International, LLC
911 Industrial Drive S.W.
Conover, NC 28613
United States of America



March 2017

CRN – Canadian Registration Numbers - Saskatchewan

The Province of Saskatchewan participates with Quebec and the Canadian Standards Association (CSA Group) for the registrations of “Fittings”.

Per an agreement with CSA Group in April 1998, Saskatchewan recognizes registrations done by CSA Group and accepts such fittings for use in Saskatchewan.

The letters “CSA” are applied as a prefix to the CRN to indicate which “Fittings” have been registered in this manner. You should inform your clients of this additional marking requirement and that “Fittings” registered by CSA Group are accepted for use in Saskatchewan Canada.