

REGO®



2021 Featured Product Information

Second Stage Regulators for 2 PSI Systems

3/4" & 1" Swing-Check ESV for Small Line Applications

Flanged ESVs for Bulk Plants

Presto Tap® Universal Service Tech Kit

Reducer Coupling

ACME Hose Couplings for Liquid or Vapor Service

Low Emission Unloading Adapter

Pressure Relief Valve with Check Device



History

From the company that pioneered propane regulators, you expect nothing less than products that lead the industry. For over 100 years, we have been manufacturing gas regulating equipment to the highest standards of precision and durability—standards that we set.



Quality Design & Manufacturing

Our regulators have stood the test of time. The basic design is ingenious. The materials are top quality. The robot-assisted manufacturing is precise. RegO values the relationships we have with our customers, and we stand behind our products.



Industries Best Partners to Help Support You

Our distributors are the best in the industry. Distributors are indispensable contributors to our success and we treat them as the valuable partners they are. We support our distributors and OEMs with training, inventory and technical support around the world.



10 Year Warranty on All Products

Quality materials, innovations and long lasting design are built into every product we manufacture. That's how we can offer the RegO 10 Year Warranty, double that offered by most manufacturers.



Made in the USA

All of our regulators are designed, assembled and tested in North Carolina. Products Made in the USA allow us to maintain our strict quality control standards that are unmatched by any other company. Every single unit is rigorously tested before it goes out the door.

Long Lasting Product

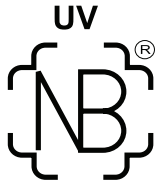
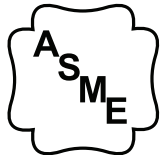
With the largest installed base in the industry, RegO has over 110 years of field proven track record of long lasting service.

Supply Chain Management

RegO utilizes the Production Part Approval Process (PPAP) in our supply chain. Critical measurements are taken of all components parts to ensure quality and reliability.

World-class quality—but don't just take our word for it.

RegO builds products that last. Our durable materials, proven designs, and rigorous testing, all add up to products designed for years of operations under harsh conditions. With internal standards like these, it's no wonder that RegO quality is recognized the world over.



25 Year Silver Service Life

RegO Regulators stand the test of time. With an Industry leading 25 year recommended service life our regulators provide a lower cost of ownership and reliable service.

100% Testing

All our products are 100% tested at multiple steps in the process from incoming component quality to final assembly testing for leakage, lock up and set pressure.

Manufacturing Excellence

RegO uses top quality materials and precise robot-assisted manufacturing in our US factories. That means every product has consistent quality.

We Stand Behind Our Products

RegO values the relationships we have with our customers, and we stand behind our products. In addition to an industry leading 10 year warranty on our products, we support our channel partners with ongoing training and technical assistance.

8D Quality Metric Tracking

- D0 Plan
- D1 Create A Team
- D2 Define & Describe the Problem
- D3 Contain the Problem
- D4 Identify, Describe & Verify Root Causes
- D5 Choose Corrective Actions
- D6 Implement & Validate Corrective Actions
- D7 Take Preventative Measures
- D8 Congratulate Your Team



Download the new version of the RegO App

Now with Relief Valve Sizing! What else is New?

- New pipe sizing calculator
- Maximum BTU load added in calculator
- RegO Regulator selector sheet
- Regulator performance curves.
- Relief valve calculator for LPG & NH3
- Link to RegO's field topics

Convenient and easy to use...

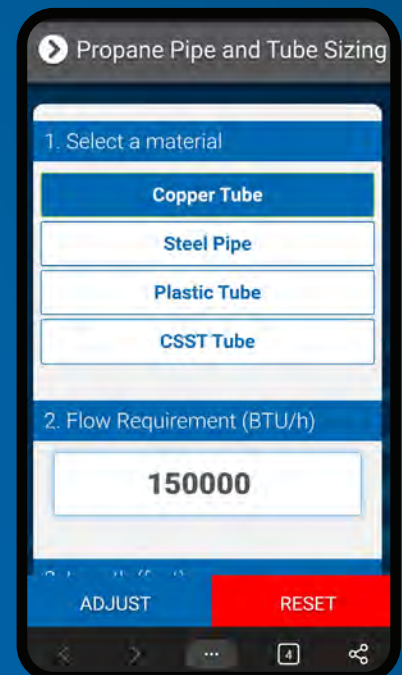
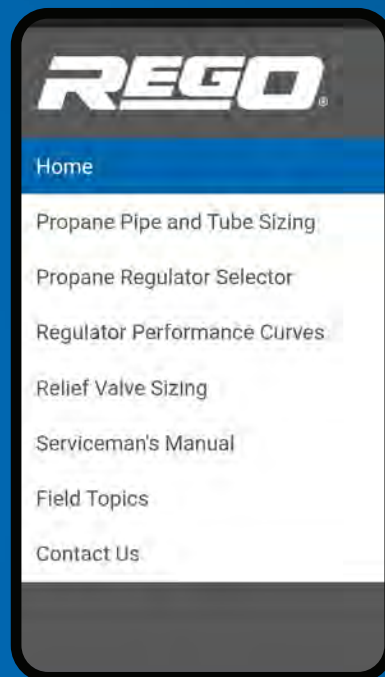
Download it for FREE!



Download on the
App Store



GET IT ON
Google Play



Second Stage Backmount Regulators for 2 PSI Systems LV4403Y66 and LV4403Y66R Series

Application

Designed to reduce first stage pressure of 10 PSIG down to 2 PSIG. A line pressure regulator is required downstream to reduce the 2 PSIG to a nominal 11" w.c.

Features

- Large vent helps prevent blockage and has 3/4" F.NPT for vent piping.
- With 15 PSIG inlet pressure, regulator is designed to not pass more than 5 PSIG with the seat disc removed.
- Incorporates an integral relief valve.
- Replaceable valve orifice and valve seat disc.
- Straight line valve closure reduces wear on seat disc.
- Unique bonnet vent profile minimizes vent freeze over when properly installed.
- Large molded diaphragm is extra sensitive to pressure changes.
- Built in pressure tap has plugged 1/8" F.NPT outlet. Plug can be removed with a standard 7/16" wrench.
- Select blue finish.

*Backmount Design

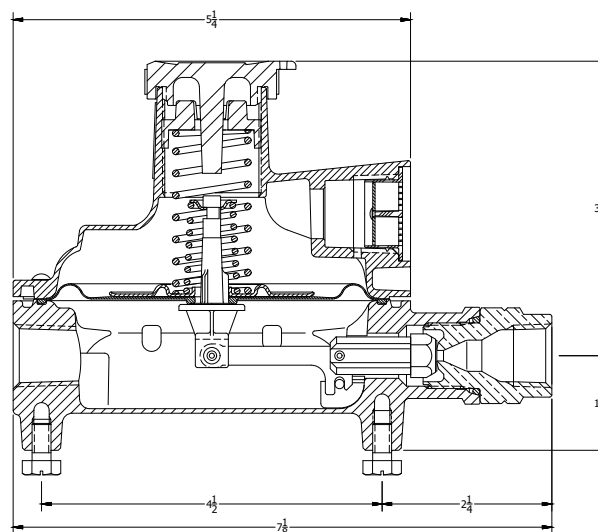
Mounts directly to house line piping. Eliminates need for union joints, elbows, and mounting brackets. Quick and easy to install.

Materials

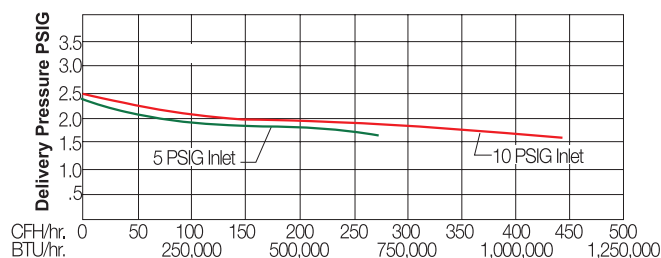
Body	Die Cast Zinc
Bonnet	Die Cast Zinc
Nozzle Orifice	Brass
Spring	Steel
Valve Seat Disc	Resilient Rubber
Diaphragm	Integrated Fabric and Synthetic Rubber



LV4403Y66



LV4403Y66 LV4403Y66R



Ordering Information

Part Number	Inlet Connection	Outlet Connection	Orifice Size	Factory Delivery Pressure		Adjustment Range	Bonnet Vent Position	Vapor Capacity BTU/hr. Propane**
				psig	bar			
LV4403Y66	3/4" F. NPT	3/4" F. NPT	1/4"	2 psig at 2 psig inlet	0.138 bar at 0.69 bar inlet	1 to 2.5 psig (0.07 to 0.17 Bar)	Over Inlet	1,000,000
LV4403Y66R*								

*Backmount Design

**Maximum flow is based on 10 PSIG inlet pressure and 1.5 PSIG delivery pressure.

3/4" & 1" Swing-Check ESV For Small Pipe Installations. A6006 & A6008 Series

Application

The A6006 & A6008 series are designed for installation in liquid transfer lines at LP-Gas fueling stations or other small pipe installations. The new valves provide for quick shut-off of flow in the event of an accidental line break, or hose rupture. These ESVs also utilize a thermal fuse assembly that will shut-off flow in case of fire.

Features

Meets NFPA 58 and UL requirements

- Fusible Element is located in the thermal fuse assembly, which acts at the latch open and close trigger. When exposed to fire, the element melts at 212° F, allowing the shaft to return to the closed position.
- Valve can be opened by use of operating lever. If a pneumatic open/close or rotary actuator is used, it will open the actuator.
- Valve can be closed by remote cable or pneumatic actuator.
- Valve can be closed by simply pushing the operating lever down; it is not necessary to trip the close trigger.

Sturdy Rugged Construction

- Will withstand hydraulic shock of sudden closings, piping strains, and temperature variations.
- Valve has only two moving parts, stem and close/thermal trigger.
- A6006 and A6008 are UL listed for use in LP-Gas and NH3 as an emergency and operating shut-off valve.
- Stem seals are spring loaded for leak free performance at low temperatures/pressures.
- Seat Disc is retained by a metal seat to minimize leakage in case of direct fire impingement.
- Quick closing regardless if the pump is running or not.

Materials

Body Ductile Iron Clad Plated
Stem Stainless Steel
Seat Stainless Steel
Seat Disc Synthetic Rubber (AA6006 & AA6008 only)
Springs Stainless Steel
Packing..... Teflon



Ordering Information

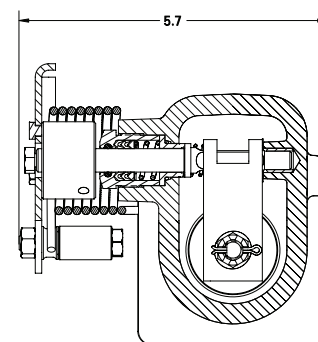
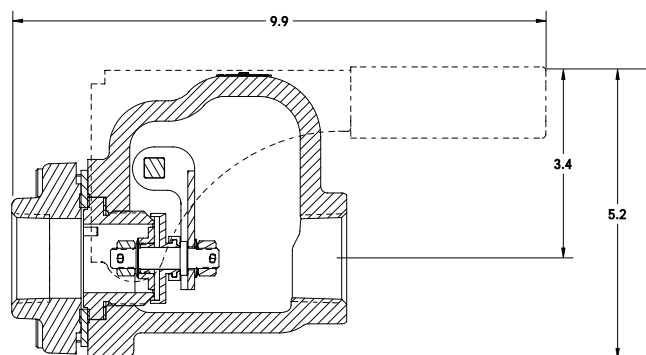
Part Number	Seat	Inlet and Outlet Connections	Accessories			Liquid Flow Capacity @ 10 PSIG Pressure Drop (GPM)
			Remote Pneumatic Close	Remote Pneumatic Open/Close	Rotary Actuator	
A6006	Buna-N	3/4" F. NPT	6016-60D	6016-60C	6016RA	54 (LP-Gas) 49 (NH3)
A6008		1" F. NPT				120 (LP-Gas) 108 (NH3)



A6006



A6008



Flanged ESVs for Bulk Plants FA6010, FA6016 and FA6024

Application

Designed for installation in liquid transfer lines at LP-Gas or Anhydrous Ammonia bulk plants to provide for quick shut-off of liquid or vapor flow in the event of an accidental pull-away, line break, or hose rupture.

Features

- Fusible Element is located in the thermal fuse assembly which acts at the latch open and close trigger. When exposed to fire, the element melts at 212° F allowing the shaft to return to the closed position.
- Valve can be opened by use of operating lever, if a pneumatic actuator is used it will open with the actuator.
- Valve can be closed by remote cable or pneumatic actuator.
- Valve can be closed by simply pushing the operating lever down. It is not necessary to trip the close trigger.
- Seat Disc is retained by a metal seat to minimize leakage in case of direct fire impingement.
- Quick closing regardless if the pump is running or not.

Sturdy Rugged Construction

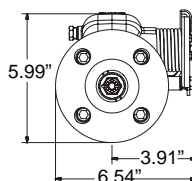
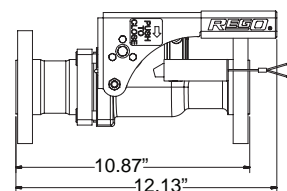
- Will withstand hydraulic shock of sudden closings, piping strains, and temperature variations.
- Valve has only two moving parts, stem and close/thermal trigger.
- UL listed for use in LP-Gas as an emergency and operating shut-off valve.
- Stem seals are spring loaded for leak free performance at low temperatures/pressures.

Materials

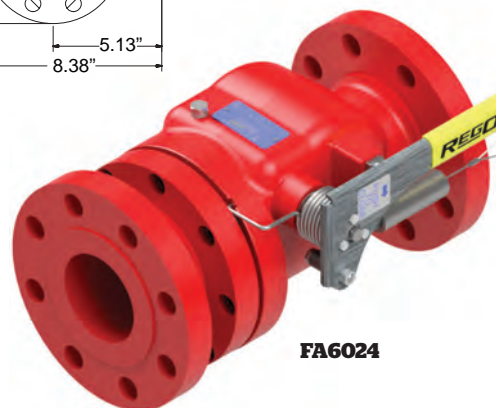
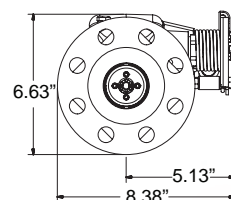
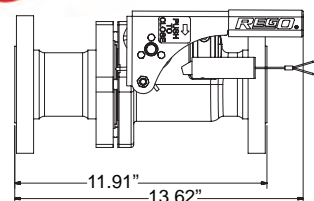
Body Ductile Iron Cad Plated
Stem Stainless Steel
Seat Stainless Steel
Seat Disc (FVA6010/16/24) High Temperature Viton
Seat Disc (FA6010/16/24) Nitrile
Springs Stainless Steel
Stem Seals Teflon



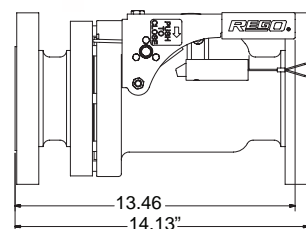
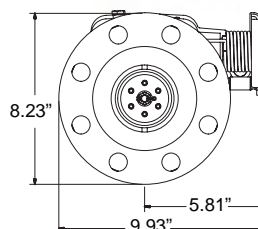
FA6010



FA6016



FA6024



Ordering Information

Part Number	Seat	Inlet and Outlet Connections	Liquid Flow Capacity at 10 PSIG Drop (GPM)	Accessories			
				Remote Close Pneumatic	Remote Open/Close Pneumatic	Remote Open/Close Rotary	Electric Actuator
FVA6010	Viton	1¼" - 300# ANSI RF Flange	233 (NH3)	FA6016-60D	*	6016RA	6016EA
FA6010	Buna-N	1¼" - 300# ANSI RF Flange	259 (LP-Gas)				
FVA6016	Viton	2" - 300# ANSI RF Flange	640 (NH3)				
FA6016	Buna-N	2" - 300# ANSI RF Flange	711 (LP-Gas)				
FVA6024	Viton	3" - 300# ANSI RF Flange	1173 (NH3)				
FA6024	Buna-N	3" - 300# ANSI RF Flange	1325 (LP-Gas)		6016-60C		

* Not Available

Universal Service Tech Diagnostic & Leak Test Kit for All Stages of the Gas System

PTU-KIT

Application

Kit with gauges for obtaining pressure readings and leak testing at tank pressure, first stage, two pound and low pressure (0-20 OZ) locations.

Features

- PT6800 KGA w/adapter – 300 pound ambient temperature gauge used for leak testing at tank pressure with Presto-Tap pigtails, TPF fittings and RegO “READY to GO” series valves.
- PT30- KGA w/adapter – 30 pound gauge for determining lock up and flow of first stage regulators along with leak testing.
- PT5-KGA - w/adapter 5 pound gauge for determining lock up and flow in 2 pound systems.
- PTOZ-KGA w/adapter – 0035-inch water column (0-20OZ) gauge for measuring second stage regulator lock up and flow along with low pressure leak testing.
- MHA-KIT – Adapter to facilitate use of water manometers and Helix gauges.
- 316AHW Allen/ Hex key – for plug removal in regulators.
- RCW716 Ratcheting wrench for plug removal and installing Presto-tap LDS2000/RV fittings.
- PTFLEX-KIT - 36" Flexible hose with gauge bleeder and adapters utilized to universally connect all gauging equipment included and Presto-Tap LDS2000/RV fittings.
- LDS2000/RV – (6) UL Listed fittings with #54 orifice legal installed at any point in the system.
- KIT BAG- 12" Denier Nylon tool bag with 8 outer pockets and 15 inner pockets.



PTU-KIT

Materials

PT6800 KGA w/adapter.....	Stainless Steel- Brass
PT30- KGA w/adapter	Stainless Steel- Brass
PT5-KGA - w/adapter	Steel- Brass
PTOZ-KGA w/adapter	Steel- Brass
MHA-KIT	Brass
3/16 Allen/ Hex key.....	Steel
7/16 Ratcheting wrench.....	Steel
PTFLEX-KIT	Brass/Composite
LDS2000/RV.....	Brass
KIT BAG	Denier Nylon

Ordering Information

Part Number	Description
PTU-KIT	Universal Service Tech Diagnostic & Leak Test Kit for All Stages of the Gas System

Reducer Coupling A5777

Application

Reduce a 3/4" ACME connection to a 1/4" ACME connection. Specifically designed to allow for operation of interlock switches which control the safety systems of transport vehicles to allow for the pump to be used for unloading and evacuation purposes. The stainless steel flange is flush mounted to the Acme reducer.

Features

- Resilient nitrile gasket to firmly seal connection against leaks and pressure loss

Materials

Gasket Nitrile
Flange Plate 300 Series Stainless Steel
Body Cadmium-Plated Steel & Brass



**A5777
Reducer Coupling**

Ordering Information

Part Number	Material	F. ACME Connection	M. ACME Connection
A5777	Brass	3/4"	1/4"

Equipped with Stainless Steel Flange

ACME Hose Couplings for Liquid or Vapor Service with Integral Screen 3195S and A3195S

Application

The 3195S/A3195S Hose Couplings are designed to prevent debris from entering and impeding the action of valves and components in LPG piping systems at bulk and industrial plants.

Features

- Meets NFPA 58 requirements for liquid transfer.
- Stainless steel screen installed in the tail piece of the hose coupling.

Materials

A3195

Body Ductile iron Nut & Cadmium-Plated Nipple

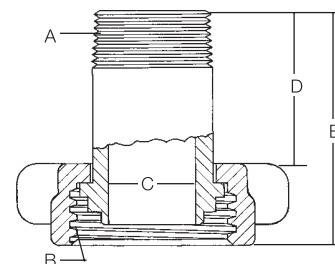
A3195S

Body Ductile iron Nut & Cadmium-Plated Nipple
Strainer 300 Series Stainless Steel



3195S

**Style B
For Liquid Filling**



Ordering Information

Part Number	Material	Style	A. Hose Connection (M. NPT)	B. Coupling Connection (F. ACME)	C. Tailpiece Bore	D. Hose End To Nut	E. Overall Length
3195S	Brass Nut & Steel Nipple	B	2"	3/4"	1 1/8"	2 1/4"	3 3/8"
A3195S	Steel						

Low Emission Unloading Adapter A7568LE

Application

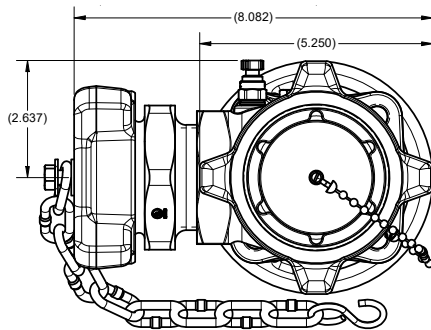
Designed for use in conjunction with our 6588LE and 6589LE low emission filler valves installed on bobtails and transports. Valve is designed to unload through the 6588LE and 6589LE filler valves. stem position is controlled by the hand-wheel with a durable ACME thread for maximum travel with minimal rotation. Stem will open upper check of filler valve and allow flow out of the tank.

Features

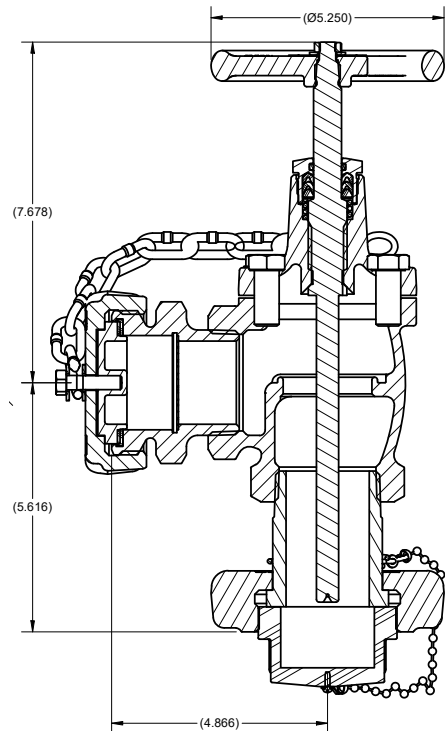
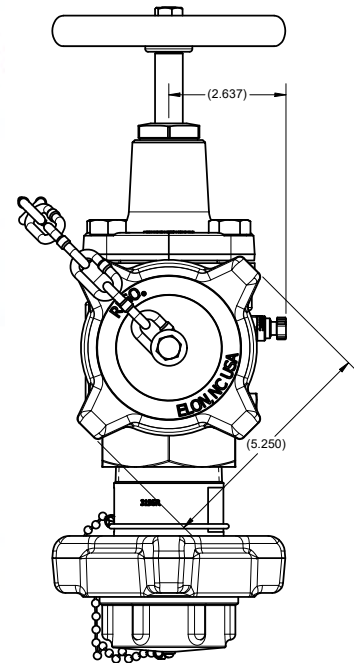
- V-ring spring loaded pressure stem seal provides for leak-proof operation. No packing to retighten or replace.
- Circular bridge in globe design and a dropped seat in the angle design achieve greater flow with less pressure drop.
- Heavy duty rolled ACME stem threads provide quick action and long service life.
- Cap and plug provided for safe storage when not in use
- Durable RegO adapters on inlet and outlet.

Materials

Body Ductile Iron
Stem Stainless Steel
3¼" M.ACME X 2" M.NPT Adapter.....Stainless Steel
Body Brass
Screen Stainless Steel
Gasket Resilient Rubber



A7568LE



Ordering Information

Part Number	Inlet	Outlet	Cap and Plug for Both Ends
A7568LE	3¼" F. ACME	3¼" M. ACME	Yes

Pressure Relief Valve with Check Device

RTG2831 Series *For Use Outside the United States

Application

These external valves are designed for use as a primary relief valve on above ground domestic LPG DOT containers. The Check Device (isolation valve) permits the exchange of the relief valve without the necessity of evacuating the container.

Features

- Relief valves provide “pop action” performance
- Weep hole is incorporated on the connection thread, which indicates the check is closed and the valve may be removed.
- A metal to metal make up on the check device allows for a “signal flow” of gas to act as a reminder that the container is unprotected when the valve is removed.
- Complies with Standard CGA S-1.1

Materials

PRV

Body Brass
 Spring Steel
 Stem Stainless Steel
 Seat Disc Resilient Rubber

Check Device

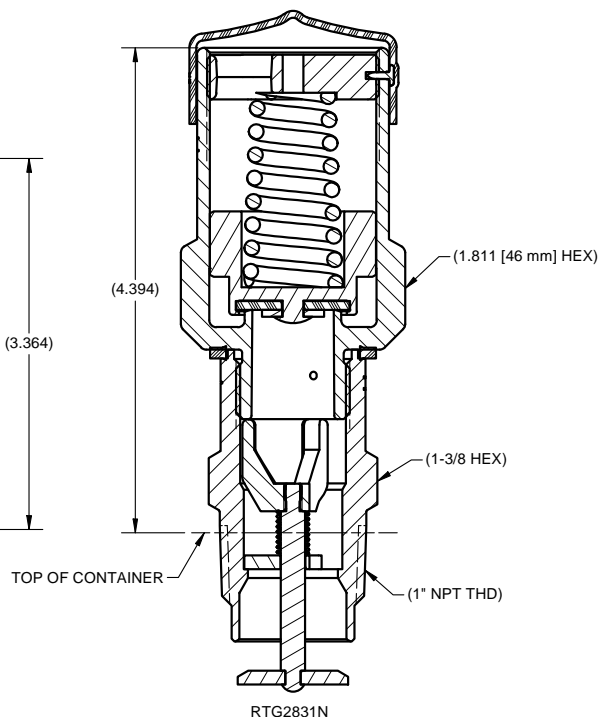
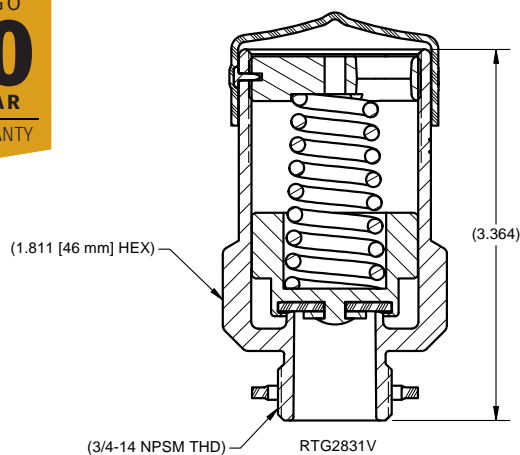
Body Brass
 Stem Brass



RTG2831N375



RTG2831V375



Ordering Information

Part Number	Includes Check Device	Includes Seat	Check Device Inlet Connection	Check Device Outlet Connection	Relief Valve Inlet Connection	Relief Valve Pressure Setting	Relief Valve Flow Rating (SCFM)	Relief Valve Flow Rating (M ³ /min)
RTG2831N375	Yes	Yes	1"-11.5 NPTF THD	3/4-14 NPSM-2B THD	3/4-14 NPSM-2A THD	375 PSI	2267.91	64.22
RTG2831V375	No							



GLOBE VALVES



TANK VALVES



INTERNAL VALVES



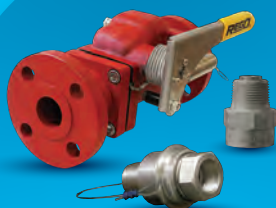
HOSE END VALVES



REGULATORS



RELIEF VALVES



SAFETY VALVES



RegO® Reliability.

Long-life, worry-free LPG products.

When you specify RegO, you get 100% tested products backed by our industry-leading 10-year warranty and our global support network. From regulators to valves, our products are designed for fast and easy maintenance, to save you time and money—and give you peace of mind.



DOWNLOAD Your free RegO LP-Gas Application Guide at regoproducts.com/lpg-guide
Contact RegO at 336.226.3244 | Find a distributor at: regoproducts.com/dist

REGO®

