

Low Pressure Leak Testing

Steps to Leak Testing

Achieved by installing Presto-Tap LDS2000/RV in second stage regulator ports accessing low pressure about 11" w.c .or (domestic appliance pressure)

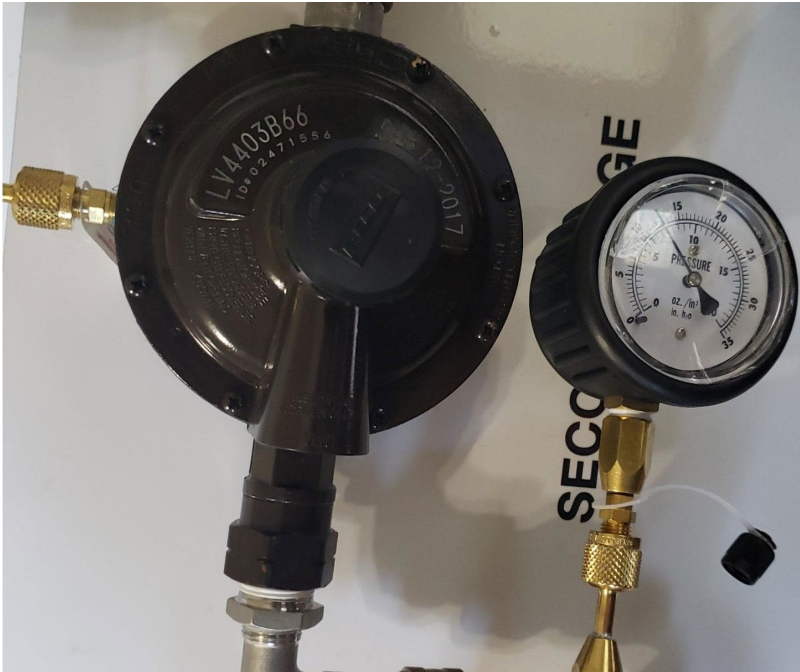
Presto-tap gauge, Water manometer, mechanical manometer and electronic manometer can be used with addition of hose barb to Presto-Tap Quick Adapter

Close the service valve and release enough pressure to drop the system pressure at 9" w.c. + or - 0.5" w.c.

Observe gauge for any increase or decrease in pressure for SOP and applicable code

Rise in pressure indicates faulty seat in service valve

Decrease in pressure indicates a leak in system



The information contained in this presentation is for informational purposes only, and is not intended as a substitute for legally required training

