

External Hydrostatic Relief Valves

3125, 3127, 3129, SS8001, SS8002, SS8021 and SS8022 Series

Application

Designed especially for the protection of piping and shut-off valves where there is a possibility of trapping liquid LP-Gas or anhydrous ammonia. They may be installed in pipelines and hoses located between shut-off valves or in the side boss of RegO shut-off valves.

Features

- Relief valve designed to automatically reseal firmly after discharge.
- Resilient seat disc provides a "bubble-tight" seal.
- Available in both brass and stainless steel.
- Available in configurations that permit direct attachment of vent piping when required.



Materials

Body (3125, 3127, 3129)..... Brass
 Body (SS8001, SS8002, SS8021, SS8022)..... Stainless Steel
 Spring..... Stainless Steel
 Seat Disc..... Resilient Rubber

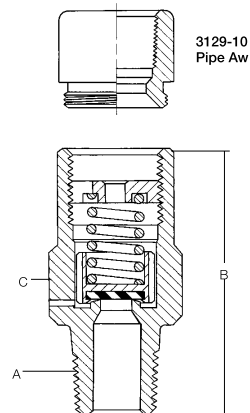
Ordering Information

Part Number	Start To Discharge Setting PSIG	Valve Body Material	Container Connection M. NPT	Height (Approx.)	Wrench Hex Section	Accessories		
						Protective Cap	Pipeaway	
							Adapter or Threads	
SS8001G**	250	Stainless Steel	1/4"	7/8"	11/16"	8001-55	-	
SS8002G**			1/2"		7/8"	8022-54		
SS8021G**			1/4"	1 1/8"	11/16"	8001-55		1/4" NPSM Thrds
SS8022G**		1/2"	7/8"		8022-54	3/8" NPT Thrds		
3127G		Brass	1/4"	1 31/32"	1 1/8"	9103-54		-
3129G			1/2"	2 19/32"		3129-40P		3129-10*
SS8001N**	265	Stainless Steel	1/4"	7/8"	11/16"	8001-55	-	
SS8002N**			1/2"		7/8"	8022-54		
SS8021N**			1/4"	1 3/8"	11/16"	8001-55		1/4" NPSM Thrds
3127H		Brass	1/4"	1 31/32"	1 1/8"	9103-54		-
3129H			1/2"	2 19/32"		3129-40P		3129-10*
SS8001H**		275	Stainless Steel	1/4"	7/8"	11/16"		8001-55
SS8002H**	1/2"			7/8"		8022-54		
SS8021H**	1/4"			1 3/8"	11/16"	8001-55	1/4" NPSM Thrds	
SS8022H**	1/2"		1 3/8"	7/8"	8022-54	3/8" NPT Thrds		
3127P	Brass		1/4"	1 31/32"	1 1/8"	9103-54	-	
3129P			1/2"	2 19/32"		3129-40P	3129-10*	
SS8001P**	300	Stainless Steel	1/4"	7/8"	11/16"	8001-55	-	
SS8002P**			1/2"		7/8"	8022-54		
SS8021P**			1/4"	1 3/8"	11/16"	8001-55		1/4" NPSM Thrds
SS8022P**		1/2"	1 3/8"	7/8"	8022-54	3/8" NPT Thrds		
3127J		Brass	1/4"	1 31/32"	1 1/8"	9103-54		-
3129J			1/2"	2 19/32"		3129-40P		3129-10*
SS8001J**	350	Stainless Steel	1/4"	7/8"	11/16"	8001-55	-	
SS8002J**			1/2"		7/8"	8022-54		
SS8021J**			1/4"	1 3/8"	11/16"	8001-55		1/4" NPSM Thrds
SS8022J**		1/2"	1 3/8"	7/8"	8022-54	3/8" NPT Thrds		
3127K		Brass	1/4"	1 31/32"	1 1/8"	9103-54		-
3129K			1/2"	2 19/32"		3129-40P		3129-10*
SS8001K**	375	Stainless Steel	1/4"	7/8"	11/16"	8001-55	-	
SS8002K**			1/2"		7/8"	8022-54		
SS8021K**			1/4"	1 3/8"	11/16"	8001-55		1/4" NPSM Thrds
SS8022K**		1/2"	1 3/8"	7/8"	8022-54	3/8" NPT Thrds		
3125L		Brass	1/4"	1 9/16"	9/8"	3125-40P		-
3127L			1/2"	1 31/32"		7/8"		9103-54
3129L	1/2"		2 19/32"	1 1/8"	3129-40P	3129-10*		
SS8001L**	400	Stainless Steel	1/4"	7/8"	11/16"	8001-55	-	
SS8002L**			1/2"		7/8"	8022-54		
SS8021L**			1/4"	1 3/8"	11/16"	8001-55		1/4" NPSM Thrds
SS8022L**		1/2"	1 3/8"	7/8"	8022-54	3/8" NPT Thrds		
3127U		Brass	1/4"	1 31/32"	1 1/8"	9103-54		-
3129U			1/2"	2 19/32"		3129-40P		3129-10*
SS8001U**	450	Stainless Steel	1/4"	7/8"	11/16"	8001-55	-	
SS8002U**			1/2"		7/8"	8022-54		
SS8021U**			1/4"	1"	11/16"	8001-55		1/4" NPSM Thrds
SS8022U**		1/2"	1"	7/8"	8022-54	3/8" NPT Thrds		

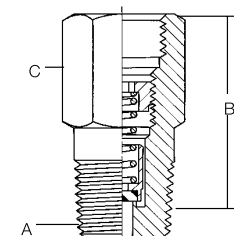
* 1/2" F. NPT outlet connection.

** Weep holes are not provided integral to these relief valves

*** Orifice diameter

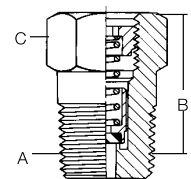


3125 Series (.161" Orifice)***
3127 Series (.274" Orifice)****
3129 Series (.386" Orifice)***



SS8022G

SS8021, SS8022 Series (.156" Orifice)***



SS8001, SS8002 Series (.156" Orifice)***