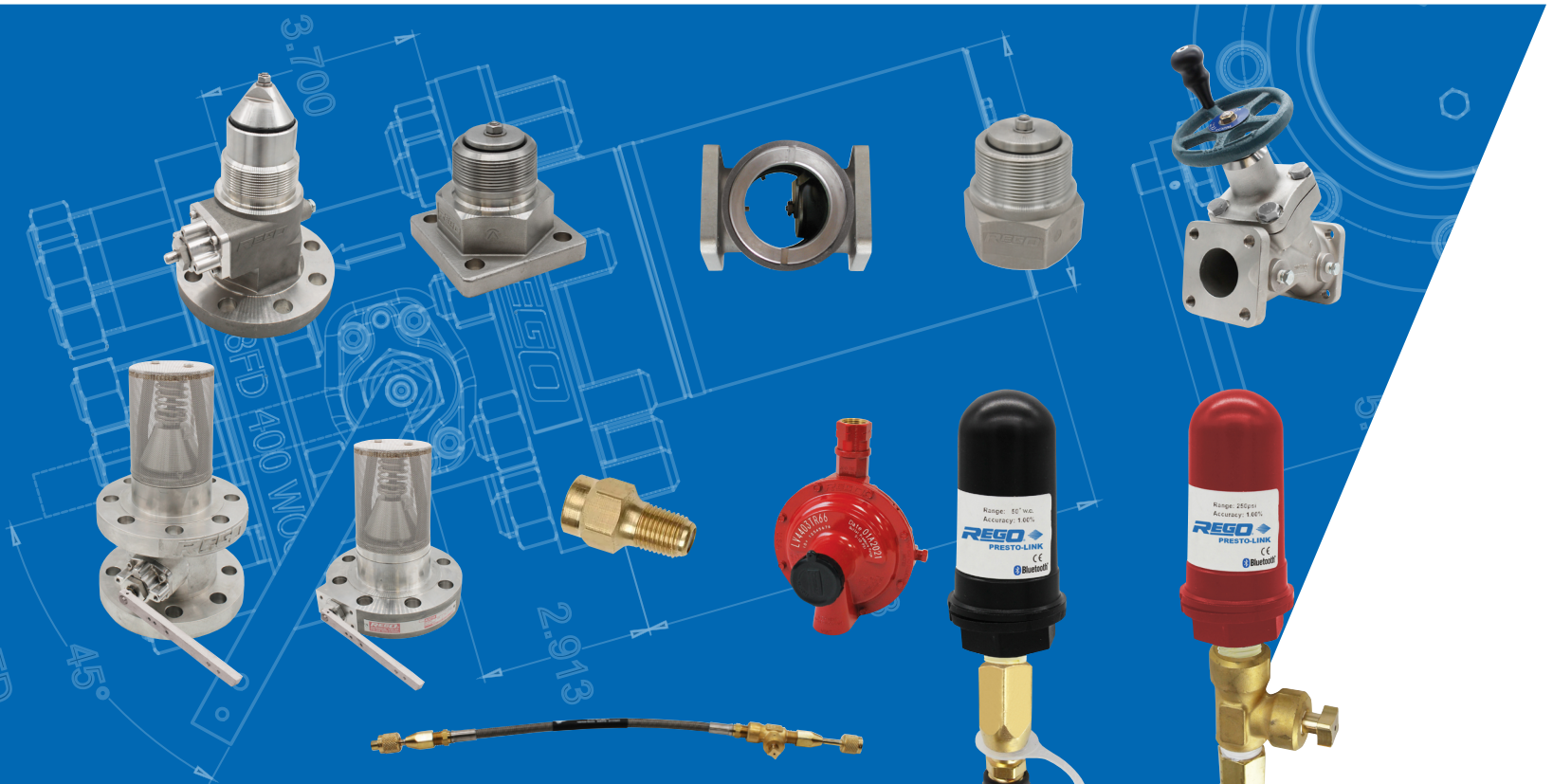




PART OF OPW | a DOVER company



REGO
18
MONTH
WARRANTY

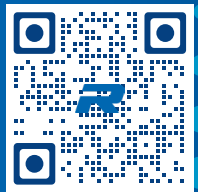
REGO
10
YEAR
WARRANTY

REGO
100%
TESTED
★

2024

Featured Product Information

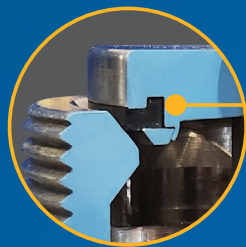
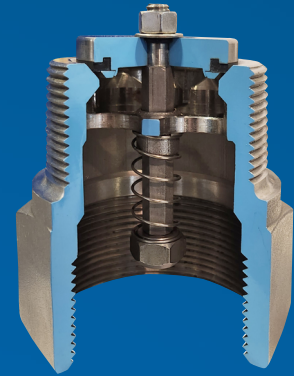
- Stainless Steel 3" Double Flange Internal Valve
- Stainless Steel 3" Single Flange Internal Valve
- Stainless Steel 1 1/4" Threaded by Flange Internal Valve
- Stainless Steel NPT Soft Seat Back Check
- Stainless Steel Flanged Soft Seat Back Check
- Stainless Steel Flanged Excess Flow Valve
- Stainless Steel Flange Adapters
- Stainless Steel Flanged Y-Globe Valves
- Stainless Steel Flanged Angle Valves
- Stainless Steel Flanged Sight Flow Indicator
- Flange Seal Liquid Transfer Angle Valves for Bulk Storage Containers
- Hose End Valve Holster
- Presto-Tap® Kits
- Presto-link® Bluetooth Gauge Kits



RegO® Soft Seat Back Checks SSA3186, SSA3196 & SSA3197 Series

Features & Benefits:

- **Soft Seat** synthetic rubber seat disc for positive seals
- **Molded Seat & Retainer** captures the seat disc in place to ensure positive placement
- Design based on the well-proven A3276BC Back Pressure Check Valve
- **Heavy-duty Stainless-Steel** construction for long service life and durability in heavy duty applications
- **Generous Flow Channels** for low pressure drop
- Rated to **400 psig Maximum Allowable Working Pressure**



Generous Flow Channels
Generous flow channels for low pressure drop

Molded Seat & Retainer
Molded Seat & Retainer captures the seat disc in place to ensure positive placement

RegO Back Checks are designed to provide protection of a container opening when desired flow is always into the vessel. May be used in line applications where flow must be limited to one direction.

Designed and suitable for use in various Bobtail and Bulk plant application



RegO® Double Flange Internal Valve SSA3218FD Series

SSA3218FD Series Features & Benefits:

- **Roller type opening** provides decades of dependable, low maintenance service
- **Cannot trap liquid** between the outlet of the valve and a shutoff valve downstream (no hydrostatic relief valve required; swing check will open and allow backflow at minimal differential pressure).
- **Bolted Bonnet Feature** allows for packing assy to be removed repaired on a bench allowing for ease of maintenance.
- **Stainless steel body** increase service life even in the harshest of conditions; does not require painting but can be if desired
- **High flow design** prevents pump cavitation and efficiency loss, saving time and money
- Rated to **400 psig Maximum Allowable Working Pressure**



Generous Flow Channels
Generous flow channels for low pressure drop

Bolted Bonnet Feature
Enables packing assembly to be removed and repaired on a bench allowing for ease of maintenance. The bonnet has separate mounting holes that do not require the bonnet assembly to be removed when replacing an actuator

Rego Stainless steel internal valve designed primarily for use with LP-Gas an anhydrous ammonia for liquid withdrawal; vapor transfer or vapor equalization.

Designed and suitable for use in various Bobtail, Transport and Bulk plant application.



Specify RegO Internal Valves on your next new tank or truck rebuild.

Stainless Steel 3" Double Flange Internal Valve SSA3218FD

Application

Stainless steel internal valve series for use with LP-Gas or NH3 on Bobtails, Transports, Storage Plants, or Nurse tanks. Can be actuated manually, by remote cable, or by various actuator types (sold separately).

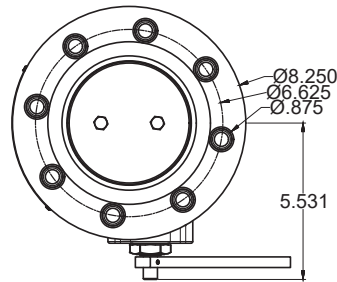
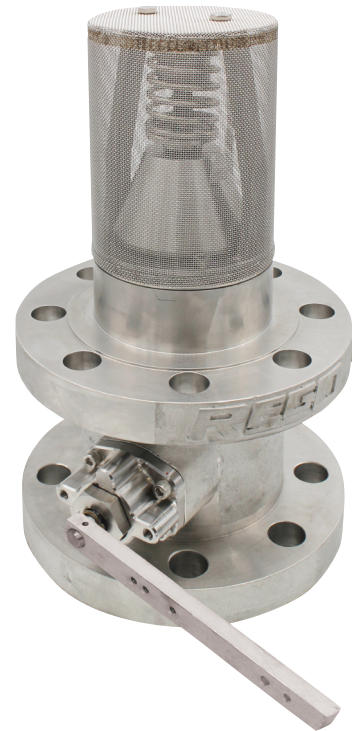


Features & Benefits

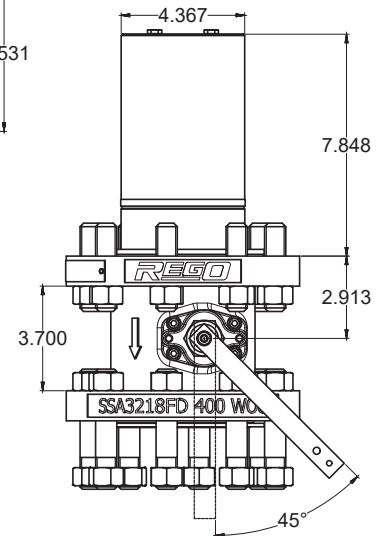
- Roller type opening provides decades of dependable, low maintenance service
- Stainless steel bodies increase service life even in the harshest of conditions; does not require painting but can be if desired
- Replacement bonnets available (sold separately)
- High flow design prevents pump cavitation and efficiency loss, saving time and money
- Built-in excess flow valve and shear studs meet or exceed industry standards to ensure safety
- Temperature range of -40°F to +165°F (-40°C to +73°C)
MAWP: 400 PSIG(27 Bar)

Materials

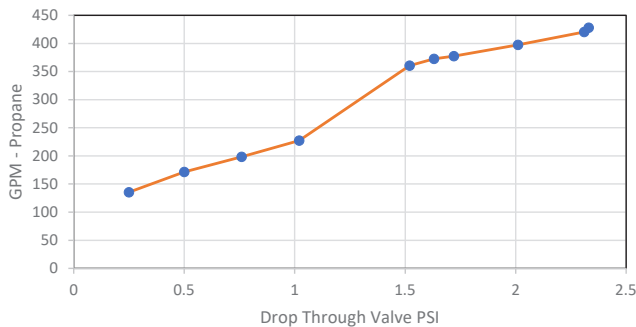
Body	Stainless Steel
Stem	Stainless Steel
Seat	Stainless Steel
Seat Disc	Nitrile
Springs	Stainless Steel
Stem Seals	PTFE



SSA3218FD



SSA3218FD Series



Ordering Information

Part Number	Inlet Connection	Outlet Connection	Closing Flow GPM		Accessories	
			LP-Gas	NH3	Pnuematic Actuator	Rotary Actaotor
SSA3218FD160	3" 300# ANSI RF Modified Flange*	3" 300# ANSI RF Flange	160	145	A3218PA	A3218OA A3218RA
SSA3218FD210			210	190		
SSA3218FD260			260	236		
SSA3218FD410			410	372		
SSA3218FD510			510	459		

* Valve supplied with 16 nuts and 8 studs for mounting.
**Modified bore=4% diameter with 5/4" diameter raised face.

Stainless Steel 3" Single Flange Internal Valve SSA3218F

Application

Stainless steel internal valve series for use with LP-Gas or NH3 on Bobtails, Transports, Storage Plants, or Nurse tanks. Can be actuated manually, by remote cable, or by various actuator types (sold separately).



Features & Benefits

- Roller type opening provides decades of dependable, low maintenance service
- Stainless steel bodies increase service life even in the harshest of conditions; does not require painting but can be if desired
- Packing can be easily serviced as piping does not have to be disconnected to remove and repack stem
- High flow design prevents pump cavitation and efficiency loss, saving time and money
- Built-in excess flow valve and shear studs meet or exceed industry standards to ensure safety
- Temperature range of -40°F to +165°F (-40°C to +73°C)
MAWP: 400 PSIG(27 Bar)

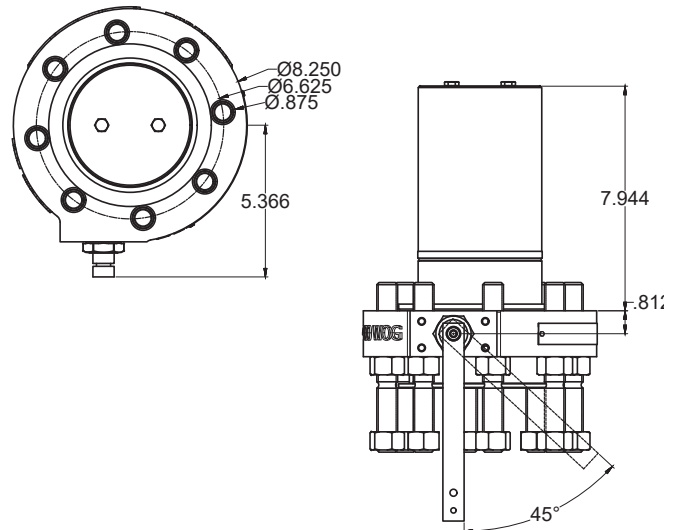
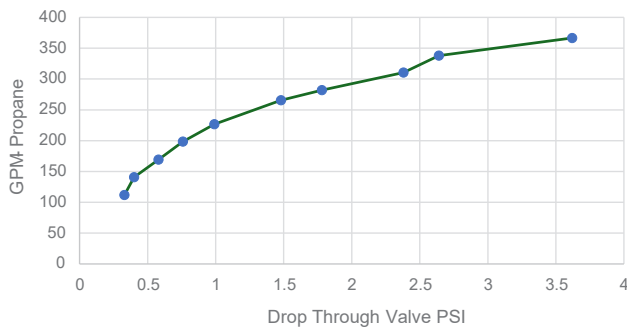
Materials

Body	Stainless Steel
Stem	Stainless Steel
Seat	Stainless Steel
Seat Disc	Nitrile
Springs	Stainless Steel
Stem Seals	PTFE



SSA3218F

SSA3218F Series



Ordering Information

Part Number	Inlet Connection	Outlet Connection	Closing Flow GPM		Accessories	
			LP-Gas	NH3	Pnuematic Actuator	Rotary Actuator
SSA3218F160	3" 300# ANSI RF Modified Flange*	3" 300# ANSI RF Flange	160	145	A3218FPA	A3218LOA A3218FRA
SSA3218F210			210	190		
SSA3218F260			260	236		
SSA3218F410			410	372		
SSA3218F510			510	459		

* Valve supplied with 16 nuts and 8 studs for mounting

Threaded Internal Valves For Bobtail Delivery Trucks, Transports and Stationary Storage Tanks SSA3213F Series

Application

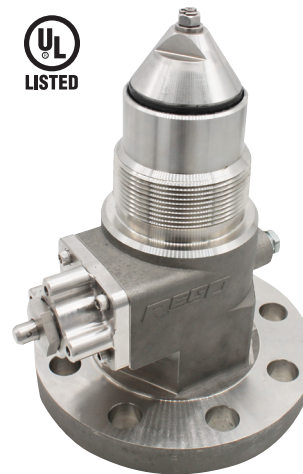
Designed primarily for use with LP-Gas and anhydrous ammonia for liquid withdrawal; vapor transfer or vapor equalization of bobtail delivery trucks, transports, stationary storage tanks, and in-line installations. The valve may be operated manually by cable or pneumatically.

Features

- May be installed in full and half couplings.
- Nylon bearing supported operating shaft provides smooth, easy operation.
- Simple operating lever facilitates easy adaptation of all cable controls.
- Midway stem position allows for quicker pressure equalization.
- Cannot trap liquid between the outlet of the valve and a shutoff valve downstream (no hydrostatic relief valve required; swing check will open and allow backflow at minimal differential pressure).
- All critical operating components are located in the valve body inside the container coupling for maximum protection against physical damage.
- Built-in excess flow valve.
- Return spring returns the valve to the closed position when the handle is released.
- Specify RegO Internal Valves on your next new tank body or when your tank is rebuilt.
- A3213FPA pneumatic actuator provides a convenient means of opening and closing the valve from a remote location, using either air or nitrogen for A3213F service valves.
- Temperature range of -40°F to +165°F (-40°C to +73°C)
- MAWP: 400 PSIG(27 Bar)



COMING SOON



SSA3213F Series

Materials

Body Stainless Steel
 Operating Lever..... Cadmium Plated Steel
 Stem Stainless Steel
 Springs Stainless Steel
 Seat Disc Resilient Synthetic Rubber
 Shaft Bearing..... Nylon



Ordering Information

Part Number	Inlet Connection	Outlet Connection	Closing Flow Half Coupling (GPM)		Closing Flow Full Coupling (GPM)		Vapor Closing Flow (SCFH)		Accessories		
			LPG	NH ₃	LPG	NH ₃	25 PSIG Inlet	100 PSIG Inlet	Pneumatic Actuator	Rotary Actuator	Thermal Latch
SSA3213F150	3" M. NPT	3" 300# ANSI R.F. Flange	150	135	125	113	26,900	45,900	A3213FPA	A3213FOA	A3213FTL
SSA3213F200			200	180	160	144	32,300	55,100			
SSA3213F300			300	270	250	225	50,500	86,500			
SSA3213F400			400	360	325	293	71,400	121,300			
SSA3213F475			475	427	385	347	NA	NA			

1/4" Threaded Internal Valve for Small Capacity Pumping Systems and Bobtail Vapor Equalization SSA3209F Series

Application

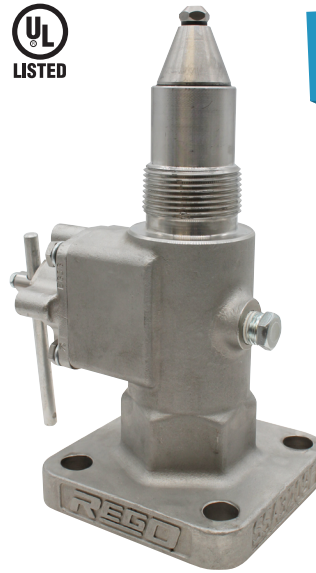
Designed primarily for use with LP-Gas and anhydrous ammonia as a main valve on small capacity pumping systems, NH3 nurse tanks and in-line installations. It may also be installed in the vapor equalizing opening on bobtail delivery trucks. Installation is quick and easy, and it fits in both full and half couplings, as well as, in-line applications. The valve may be actuated manually by hand or cable.

Features

- Valve is compact, with one piece body construction.
- Spring loaded V-packing with heavy duty wiper ring on operating shaft for dependable leak-free construction.
- Nylon bearing supported operating shaft provides smooth, easy operation.
- Simple operating lever allows for easy connection of cable controls.
- Built in excess flow valve
- Return spring forces the valve to the closed position when the lever is released.
- All critical operating components are located in the valve body and inside the container coupling for maximum protection against damage.
- Midway stem position allows for quick pressure equalization.
- Cannot trap liquid between the outlet of the valve and a shutoff valve downstream (no hydrostatic relief valve required; swing check will open and allow backflow at minimal differential pressure).
- Equipped with 212° F, UL listed fuse link for thermal protection.
- Temperature range of -40°F to +165°F (-40°C to +73°C)
- MAWP: 400 PSIG(27 Bar)

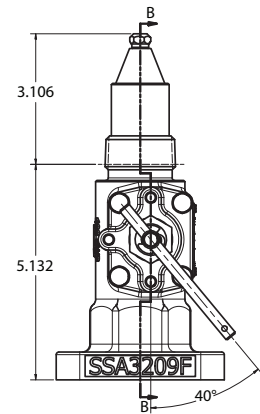
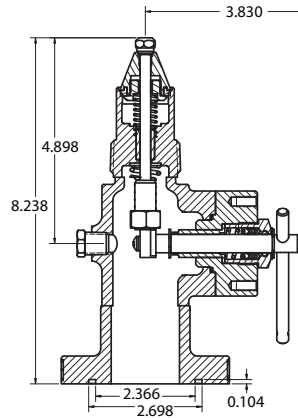
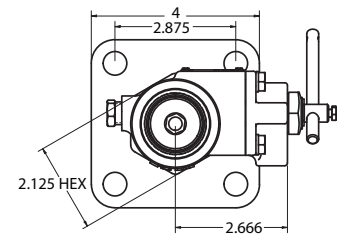
Materials

Body	Stainless Steel
Operating Lever	Cadmium Plated Carbon Steel
Stem	Stainless Steel
Springs	Stainless Steel
Seat Disc	Resilient Synthetic Rubber
Shaft Bearing	Nylon



COMING SOON

SSA3209F



Flange Adapters (Packaged with O-ring & Bolts)

Part Number	Inlet Connection	Outlet Connection
SSA3209FAS	1 1/4" 4 Bolt Type B Flat	1 1/4" Socket Weld
SSA3209FA	Face w/ Bolts & O-Ring	1 1/4" F. NPT

Ordering Information

Part Number	Inlet Connection	Outlet Connection	Closing Flow GPM		LP-Gas Vapor Capacity** (SCFH/Propane)		Accessories		
			LP-Gas	NH3	25 PSIG	100 PSIG	Thermal Latch	Pneumatic Actuators	Rotary Actuator
SSA3209F050	1 1/4" M. NPT	1 1/4" 4 Bolt Type A Groove	50	45	13,300	22,900	A3209FTL	A3209FPA A3209FPAF	A3209OA
SSA3209F080			80	72	15,700	26,700			

Stainless Steel NPT Soft Seat Back Check SSA3186, SSA3196 and SSA3197

Application

Designed to provide protection of a container opening when desired flow is always into the vessel. May be used in line applications where flow must be limited to one direction.

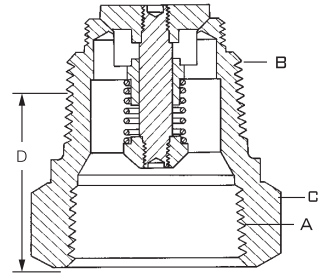
When used with the appropriate single check filler valve, the combination forms a double check filler valve suitable for use in filling of bulk storage tanks.

Features

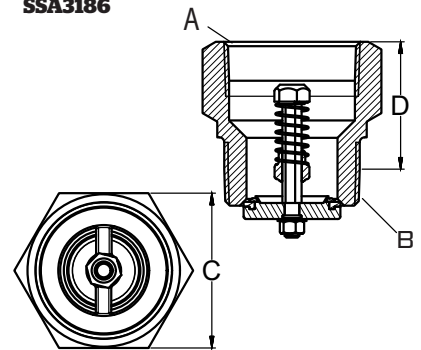
- Molded Seat & Retainer captures the seat disc in place to ensure positive placement
- Generous flow channels for low pressure drop.
- Heavy-duty Stainless Steel construction for long service life.
- Soft seat valves have synthetic rubber seat disc for positive seals.
- Temperature range of -40°F to +165°F (-40°C to +73°C)
- MAWP: 400 PSIG(27 Bar)

Materials

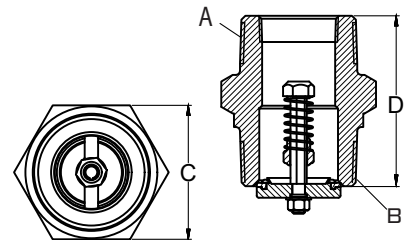
Body Stainless Steel
 Disc Stainless Steel
 Stem Stainless Steel
 Spring Stainless Steel
 Seat Disc Nitrile



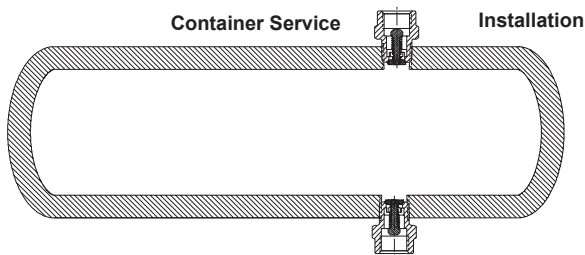
SSA3186



SSA3196



SSA3197



Ordering Information

Part Number	Inlet Connection	Outlet Connection	Wrench Hex Flats	Effective Length (approx.)	Propane Liquid Capacity at various differential pressures (GPM)			
					5 PSIG	10 PSIG	25 PSIG	50 PSIG
SSA3186	2" M. NPT	2" F. NPT	3"	2 ³ / ₈ "	124	175	276	391
SSA3196	3" M. NPT	3" F. NPT	4"	3 ⁷ / ₃₂ "	297	420	664	939
SSA3197		2" F. NPT/3" M. NPT		5 ⁹ / ₁₀ "				

NOTE: Multiply flow rate by .94 to determine liquid butane capacity and by .90 to determine liquid anhydrous ammonia capacity.

Stainless Steel Flanged Soft Seat Back Check SSA3186F and SSA3196F

Application

Designed to provide protection of a container opening when desired flow is always into the vessel. May be used in line applications where flow must be limited to one direction.

When used with the appropriate single check filler valve, the combination forms a double check filler valve suitable for use in filling of bulk storage tanks.

Features

- Molded Seat & Retainer captures the seat disc in place to ensure positive placement
- Generous flow channels for low pressure drop.
- Heavy-duty Stainless Steel construction for long service life.
- Soft seat valves have synthetic rubber seat disc for positive seals.
- Temperature range of -40°F to +165°F (-40°C to +73°C)
- MAWP: 400 PSIG(27 Bar)

Materials

Body	Stainless Steel
Disc	Stainless Steel
Stem	Stainless Steel
Spring	Stainless Steel
Seat Disc	Nitrile



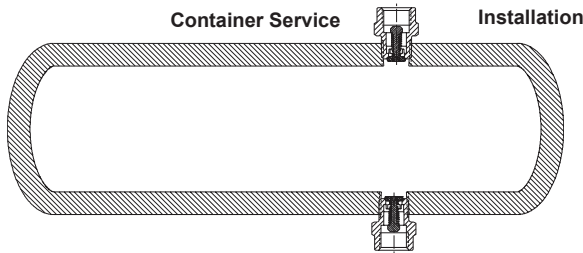
COMING SOON



SSA3186F



SSA3196F



2" Flange Adapters (Packaged with O-ring & Bolts)

Part Number	Inlet Connection	Outlet Connection
SSA7513FAS	2" 4 Bolt Type B Flat Face w/ Bolts & O-Ring	2" Socket Weld
SSA7513FA		2" F. NPT

Ordering Information

Part Number	Inlet Connection	Outlet Connection	Wrench Hex Flats	Propane Liquid Capacity at various differential pressures (GPM)			
				5 PSIG	10 PSIG	25 PSIG	50 PSIG
SSA3186F	2" M. NPT	2" 4 Bolt Type A Groove	3"	124	175	276	391
SSA3196F	3" M. NPT		NA	297	420	664	939

NOTE: Multiply flow rate by .94 to determine liquid butane capacity and by .90 to determine liquid anhydrous ammonia capacity.

Stainless Steel Flanged Excess Flow Valve SSA3292 Series

Application

Designed to provide protection of a container opening when desired flow is always into the vessel. May be used in line applications where flow must be limited to one direction.

When used with the appropriate single check filler valve, the combination forms a double check filler valve suitable for use in filling of bulk storage tanks.

Features

- Generous flow channels for low pressure drop.
- Heavy-duty Stainless Steel construction for long service life.
- Soft seat valves have synthetic rubber seat disc for positive seals.
- Temperature range of -40°F to +165°F (-40°C to +73°C)
- MAWP: 400 PSIG(27 Bar)

Materials

Body	Stainless Steel
Disc	Stainless Steel
Stem	Stainless Steel
Spring	Stainless Steel
Seat Disc	Nitrile

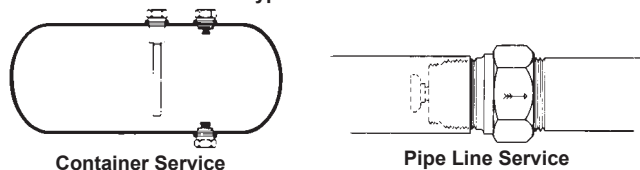


COMING SOON



SSA3292F

Typical Installation



2" Flange Adapters (Packaged with O-ring & Bolts)

Part Number	Inlet Connection	Outlet Connection
SSA7513FAS	2" 4 Bolt Type B Flat Face with Bolts & O-Ring	2" Socket Weld
SSA7513FA		2" F. NPT

Ordering Information

Part Number	Inlet Connection	Outlet Connection	Wrench Hex Flats	Effective Length (Approx.)	Approximate Closing Flow*		
					Liquid (GPM Propane)	Vapor SCFH (Propane)	
						25 PSIG Inlet	100 PSIG Inlet
SSA3292AF	2" M. NPT	2" 4 Bolt Type A Groove	3"	3 ^{13/16"}	75	14,200	24,800
SSA3292BF					100	18,100	32,700
SSA3292CF					122	22,100	37,600
SSA3292DF					160	NA	NA

NOTE: Multiply flow rate by .94 to determine liquid butane capacity and by .90 to determine liquid anhydrous ammonia capacity.

* Based on horizontal installation of excess flow valve. Flows are slightly more when valves are installed with outlet up; slightly less when installed with outlet down.

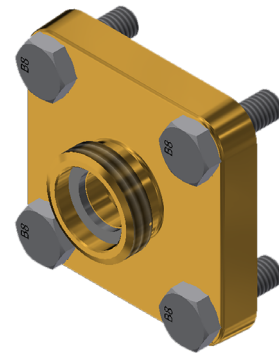
Stainless Steel & Brass Flange Adapters

Application

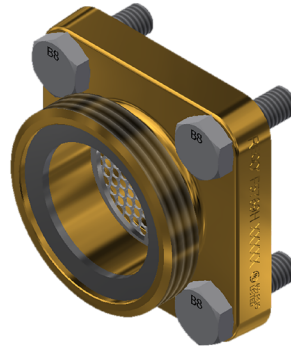
Flange Unions provide a convenient method for connecting pipe and installing valves with mating connection.

Features

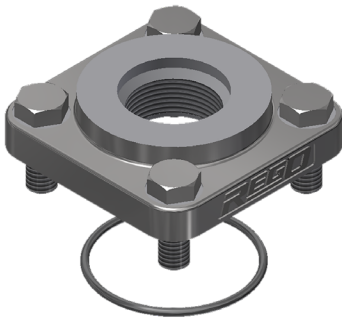
- Heavy-duty Stainless Steel construction for long service life
- Connection types available: NPT, Socket Weld
- Temperature range of -40°F to +165°F. (-40°C to +73°C)
- MAWP: 400 PSIG(27 Bar)



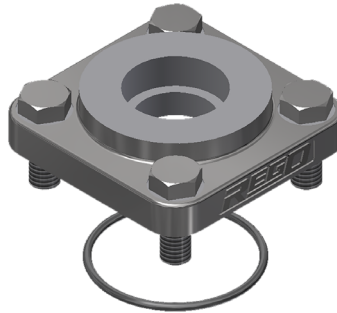
F5765F



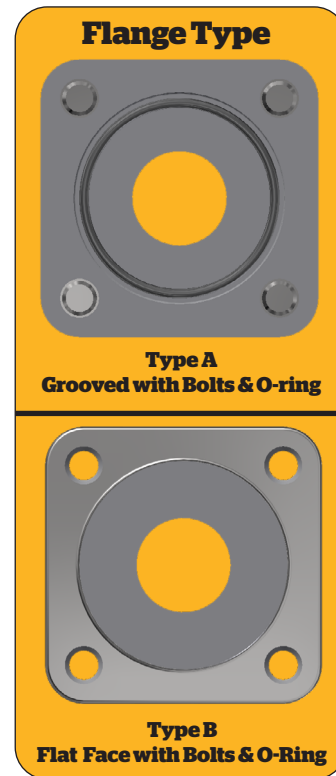
F5769H



SSA3209FASG



SSA3209FAG



1 1/4" Flange Adapters Ordering Information

Part Number	Material	Inlet Connection	Outlet Connection
SSA3209FASG	Stainless Steel	1 1/4" 4 Bolt Type A Groove w/ Bolts & O-Ring	1 1/4" Socket Weld
SSA3209FAG			1 1/4" F. NPT
F5765F	Brass		1 1/4" M. Acme
SSA3209FAS	Stainless Steel	1 1/4" 4 Bolt Type B Flat Face w/ Bolts & O-Ring	1 1/4" Socket Weld
SSA3209FA			1 1/4" F. NPT

2" Flange Adapters Ordering Information

Part Number	Material	Inlet Connection	Outlet Connection
SSA7513FASG	Stainless Steel	2" 4 Bolt Type A Groove w/ Bolts & O-Ring	2" Socket Weld
SSA7513FAG			2" F. NPT
F5769H	Brass		3 1/4" M. Acme
SSA7513FAS	Stainless Steel	2" 4 Bolt Type B Flat Face w/ Bolts & O-Ring	2" Socket Weld
SSA7513FA			2" F. NPT

“V”-Ring Seal Y Globe Valves for Bulk Storage Containers, Transports, Bobtails and Plant Piping SSA7500 Series

Application

Specifically designed to ensure positive shut-off and long, maintenance free service life in liquid or vapor service on bulk storage containers, transports, bobtails, cylinder filling plants and plant piping.

The high quality construction and wide variety of sizes make them highly suited for use with LP-Gas, anhydrous ammonia and in the chemical and petrochemical industries.

Features

- “V”-ring spring-loaded pressure stem seal provides for leak-proof operation. No packing to retighten or replace.
- The Y-type globe stem & seat arrangement are at an approximate 45 degrees, which allows for a straighter flow-path at full opening thus achieving greater flow with less pressure drop.
- Swivel seat disc assembly minimizes the seat disc from grinding on the body seat. The seat disc stops rotating as soon as it touches the body seat. This feature provides for good seat alignment and ensures long seat life.
- ½” F. NPT plugged boss on the downstream side of the valve body allows attachment of a hydrostatic relief valve or vent valve.
- Knob fitted on handle wheel for ease of opening and closure
- ¼” F. NPT plugged boss on the downstream side of the valve body allows attachment of a hydrostatic relief valve or vent valve.
- “V”-ring stem seal virtually eliminates hard to turn handles frequently encountered with packed type seals.
- Heavy duty rolled ACME stem threads provide quick action and long service life.
- Temperature range of -40°F to +165°F. (-40°C to +73°C)
- MAWP: 400 PSIG(27 Bar)

Materials

Body	Stainless Steel
Bonnet	Stainless Steel
Valve Stem	Stainless Steel
Wiper Ring.....	Synthetic Rubber
Seat Disc.....	Nitrile
“V”-Rings	Teflon
Handwheel.....	Ductile Iron
Spring	Stainless Steel



COMING SOON



SSA7509FY



SSA7513FY



1¼” Flange Adapter (Packaged with O-ring & Bolts)

Part Number	Inlet Connection	Outlet Connection
SSA3209FASG	1¼” 4 Bolt Type A Groove w/ Bolts & O-Ring	1¼” Socket Weld
SSA3209FAG		1¼” F. NPT
F5765F - Brass		1¼” M. Acme

2” Flange Adapters (Packaged with O-ring & Bolts)

Part Number	Inlet Connection	Outlet Connection
SSA7513FASG	2” 4 Bolt Type A Groove w/ Bolts & O-Ring	2” Socket Weld
SSA7513FAG		2” F. NPT
F5769H - Brass		3¼” M. Acme

Ordering Information

Part Number	Inlet Connection	Outlet Connection	Port Diameter	Accessories	
				Hydrostatic Relief Valve	Vent Valve
SSA7509FY	1¼” 4 Bolt Type B Flat Face	1¼” 4 Bolt Type B Flat Face	1¼”	SS8001U	TSS3169
SSA7513FY	2” 4 Bolt Type B Flat Face	2” 4 Bolt Type B Flat Face	2”		

“V”-Ring Seal Angle Valves for Bulk Storage Containers, Transports, Bobtails and Plant Piping SSA7500 Series

Application

Specifically designed to ensure positive shut-off and long, maintenance free service life in liquid or vapor service on bulk storage containers, transports, bobtails, cylinder filling plants and plant piping.

The high quality construction and wide variety of sizes make them highly suited for use with LP-Gas, anhydrous ammonia and in the chemical and petrochemical industries.

Features

- “V”-ring spring-loaded pressure stem seal provides for leak-proof operation. No packing to retighten or replace.
- Dropped seat in the angle design achieve greater flow with less pressure drop.
- Swivel seat disc assembly minimizes the seat disc from grinding on the body seat. The seat disc stops rotating as soon as it touches the body seat. This feature provides for good seat alignment and ensures long seat life.
- 1/4" F. NPT plugged boss on the downstream side of the valve body allows attachment of a hydrostatic relief valve or vent valve.
- “V”-ring stem seal virtually eliminates hard to turn handles frequently encountered with packed type seals.
- Heavy duty rolled ACME stem threads provide quick action and long service life.
- Knob fitted on handle wheel for ease of opening and closure
- Temperature range of -40°F to +165°F. (-40°C to +73°C)
- MAWP: 400 PSIG(27 Bar)

Materials

Body	Stainless Steel
Bonnet	Stainless Steel
Valve Stem	Stainless Steel
Wiper Ring	Synthetic Rubber
Seat Disc	Nitrile
“V”-Rings	Teflon
Handwheel	Ductile Iron
Spring	Stainless Steel



COMING SOON



SSA7510FP



SSA7514FP



1 1/4" Flange Adapter (Packaged with O-ring & Bolts)

Part Number	Inlet Connection	Outlet Connection
SSA3209FASG	1 1/4" 4 Bolt Type A Groove w/ Bolts	1 1/4" Socket Weld
SSA3209FAG		1 1/4" F. NPT
F5765F - Brass		1 1/4" M. Acme

2" Flange Adapters (Packaged with O-ring & Bolts)

Part Number	Inlet Connection	Outlet Connection
SSA7513FASG	2" 4 Bolt Type A Groove w/ Bolts	2" Socket Weld
SSA7513FAG		2" F. NPT
F5769H - Brass		3/4" M. Acme

Ordering Information

Part Number	Inlet and Outlet Connection	Port Diameter	Accessories	
			Hydrostatic Relief Valve	Vent Valve
SSA7510FP	1 1/4" 4 Bolt Type B Flat Face	1 1/4"	SS8001U	TSS3169
SSA7514FP	2" 4 Bolt Type B Flat Face	2"		

Sight Flow Indicators for Bobtails SSA7794F

Application

Designed to promote maximum pump efficiency, these indicators enable bobtail operators to visually inspect liquid flow conditions. With glass on both sides of the indicator, flow can be observed from either side, even under some poor light conditions. The integral swing check also serves as a back-check valve to prevent reverse flow and product loss if the hose fails in a loading operation. By installing an indicator on the upstream side of the pump, suction conditions can be observed, and the pump speed adjusted to obtain the maximum possible flow rate without cavitation.

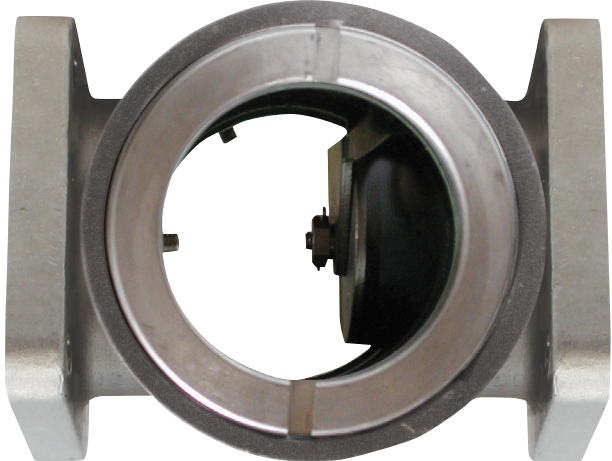
Features

- Heavy-duty Stainless-Steel construction ensures long, trouble-free operation with design working pressure of 400 PSIG.
- 4 bolt universal flange inlet/outlet connection
- Glass is polished, ground and tempered after fabrication for maximum strength up to 2,500 PSIG.
- Set screws minimize loosening of glass retainer rings.
- O-ring glass seals provide for leak-tight operation.
- 2" M. NPT x 4 Bolt Type A Flange
- All models can be used with LP Gas or NH3
- Rated 400 WOG for LPG & NH3 applications

Materials

BodyStainless Steel
 Swing Check..... Stainless Steel
 Check Seat Disc..... Resilient Synthetic Rubber
 Glass Polished, Ground, Tempered and tested to 2,500 PSIG

COMING SOON



SSA7794F



2" Flange Adapters (Packaged with O-ring & Bolts)

Part Number	Inlet Connection	Outlet Connection
SSA7513FASG	2" 4 Bolt Type A Groove w/ Bolts	2" Socket Weld
SSA7513FAG		2" F. NPT
F5769H - Brass		3/4" M. Acme

Ordering Information

Part Number	A Inlet/Outlet Connections	B Length
SSA7794	2" 4 Bolt Type B Flat Face	5 3/4"

Flange Seal Liquid Transfer Angle Valves for Bulk Storage Containers SSA7550PX

Application

These liquid transfer valves are equipped with an integral excess flow valve for liquid transfer directly from the tank fitting, or without an integral excess flow for LP-Gas transfer through a Check-Lok®. When equipped with an integral excess flow valve (7550PX), the valve should be mounted in a forged steel 3000 lb. half coupling. When mounted in a 1 1/4" x 3/4" NPT reducing coupling, the 3/4" female thread in this coupling must be full length — equivalent to a forged steel 3000 lb. half coupling.

The excess flow valve will not function properly if these specifications are not met. Refer to the Warning Bulletin in the Excess Flow Valve Section of this catalog.

Features

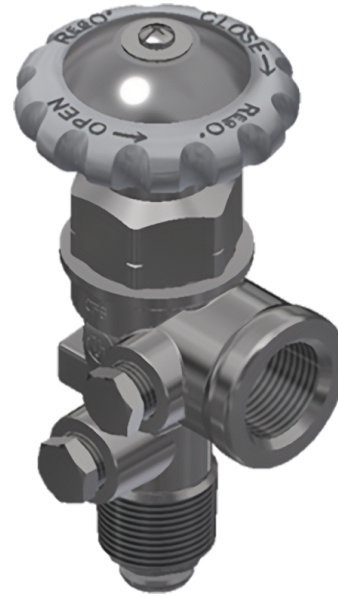
- Heavy-duty Stainless Steel construction for long service life.
- Flange seal stem design provides for leak-proof operation. No packing to retighten or replace.
- Large, unrestricted interior ports reduce pressure drop through the valve, increasing capacity and preventing cavitation.
- Resilient swivel seat disc ensures longer seat life and easy, positive shut-off.
- Integrated excess flow
- Plugged 1/4" NPT outlet boss accommodates hydrostatic relief valve or vent valve.
- Rated 400 WOG for LPG & NH3 applications

Materials

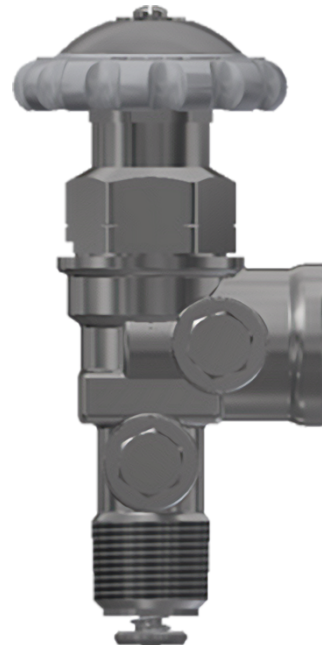
Body	Stainless Steel
Bonnet	Stainless Steel
Stem	Stainless Steel
Flange Ring	Synthetic Rubber
Seat Disc	Synthetic Rubber



COMING SOON



SSA7550PX



Ordering Information

Part Number	Inlet Connection (M. NPT)	Outlet Connection (F. NPT)	Integral Excess Flow	Flow at 1 PSIG (Cv) Pressure Drop* (GPM/Propane)	Excess Flow Approximate Closing Flow** (GPM/Propane)	Accessories	
						Hydrostatic Relief Valve	Vent Valve
SSA7550PX	3/4"	3/4"	Yes	-	16.0	SS8001J	TSS3169

* To obtain approximate flow at other than 1 PSIG pressure drop, multiply flow in table by square root of pressure drop. Example: 7550P @ 9 PSIG = 13.3 x √9 = 39.9 GPM/propane. For NH₃ flow, multiple propane flow by .90.

** For NH₃ flow, multiply propane flow by .90.

Hose End Valve Holster A7790HEH

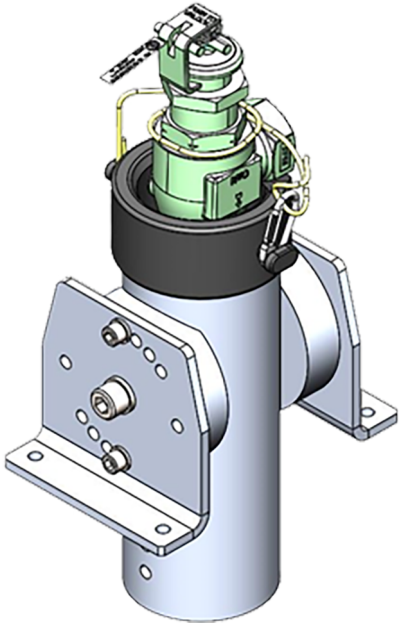
Application

Designed to provide a sturdy and robust holder to store quick-acting hose end valves for dispensary, bobtail, and transport applications. This holster allows for mounting fully above deck or partially recessed in the deck of a bobtail. Additionally, the angularity can be adjusted to allow for desired orientation. The holster can also be adjusted to allow for side mounting when needing to mount inside of a cabinet.

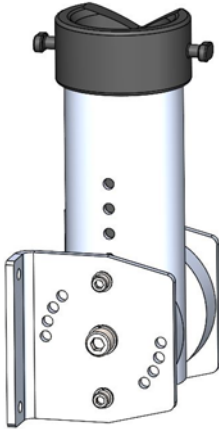
Features

- Standard orientation allows for no modification of the bobtail deck to placement
- Adjustable base designed to allow for recessing in the deck of a bobtail.
- Angularity adjustment allows for users to adjust the angle of the holster for ease of placement
- Coated coated with lanyard allows for security of the hose end valve placement
- Base and holster can be modified for wall mounted in a meter cabinet
- Vibration Resistant holster to withstand road service
- Mounting hardware supplied

COMING SOON



A7790HEH



A7790HEH Side Mounted Position

Ordering Information

Part Number	Fits Hose End Valve
A7790HEH	A7796A & A7797A

2" Flanged by Butt Weld Tee

Application

Flanged Swept tee available in both 2" butt weld pipe configuration. The swept design minimizing pressure drop thru the outlet of the piping resulting in higher flow rates and greater pump efficiency.



SSA7513TFGB

COMING SOON

REGO
10
YEAR
WARRANTY

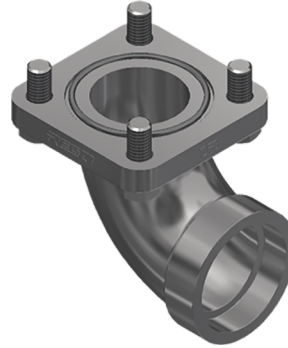
Ordering Information

Part Number	Flange Inlet "A"	Outlet "B"	Outlet "C"
SSA7513TFGB	2" 4 Bolt Type A Groove w/ Bolts	2" Butt Weld	2" Butt Weld

2" Flanged by 2" Socket Weld Elbow SSA7513FAE

Application

Swept elbow designed for bobtail pump discharge. The swept design minimizing pressure drop thru the outlet of the pump resulting in higher flow rates and greater pump efficiency.



SSA7513FAE

COMING SOON

REGO
10
YEAR
WARRANTY

Ordering Information

Part Number	Inlet Connection	Outlet Connection
SSA7513FAE	2" 4 Bolt Type A Groove w/ Bolts	2" Socket Weld

2" Flanged by Socket Weld Close Elbow

Application

2" Socket weld 4 bolt 90-degree close elbow designed for connection between piping system where a close elbow is desired. These elbows are designed to be used in conjunction with RegO flanged adapters, excess flow and back check valves.

COMING SOON



SSA7513SFGE

REGO
10
YEAR
WARRANTY

Ordering Information

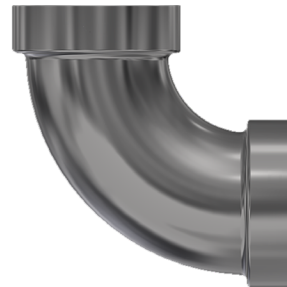
Part Number	Inlet Connection	Outlet Connection
SSA7513SFGE	2" 4 Bolt Type A Groove w/ Bolts	2" Socket Weld

2" Socket Weld Elbow Sweep

Application

Designed to provide connection between piping, Sweep elbows help to reduce fluid friction and pressure loss, allowing for a more efficient flow.

COMING SOON



SSA7513SE

REGO
10
YEAR
WARRANTY

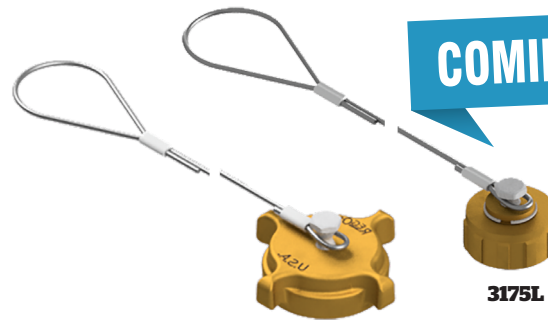
Ordering Information

Part Number	Inlet Connection	Outlet Connection
SSA7513SE	2" Socket Weld	2" Socket Weld

ACME Caps with Adjustable Cable 3175L and 3184-91

Application

Female ACME Cap with adjustable cable.



3184-91

3175L

COMING SOON

REGO
10
YEAR
WARRANTY

Ordering Information

Cap With Chain & Ring				
Part Number	Ring Fits Pipe Size Up To:	Cap Only Part Number	Material	Thread Connection
3175L	Adjustable Cable	-	Brass	1 1/4" F. ACME
3184-91				2 1/4" F. ACME

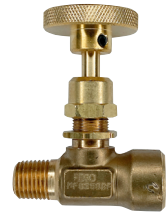
Needle Valve MF250 Series

Application

The MF250 series may be used as a small, inexpensive shut-off valve between a pressure gauge and bulk storage container to allow for convenient gauge replacement.



MFA250B



MFG250BF

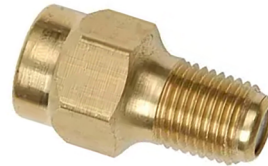
Ordering Information

Part Number	Body Orientation	Body Material	A. Inlet Connection	B. Outlet Connection	C. Height	D. Length
MFG250BF	Straight	Brass	¼" M. NPT	¼" F. NPT	2 ¹⁹ / ₃₂ "	2"
MFA250B	Angle					1 ¹¹ / ₃₂ "

Pressure Gauges Snubber 948GS

Application

Pressure snubbers protect your pressure gauge from pressure spikes, surges and damaging pulsation. Snubbers extend the life of your pressure gauges because they protect the internal components from seeing harsh spikes and surges that could cause.



948GS

Ordering Information

Part Number	Service	Body Material	Inlet Connection M.NPT	Outlet Connection F. NPT
948GS	LP-Gas Only	Brass	¼"	¼"

Teflon Seat Angle Valves for Bulk Storage Containers, Transports, Bobtails and Plant Piping TA7500 Series

Application

Specifically designed to ensure positive shut-off and long, maintenance free service life in liquid or vapor service on bulk storage containers, transports, bobtails, cylinder filling plants and plant piping. The high quality construction and wide variety of sizes make them highly suited for use with LP-Gas, anhydrous ammonia and in the chemical and petrochemical industries.



TA7514AP



TA7518FP

Ordering Information

Part Number	Angle	Inlet & Outlet Connection	Port Diameter
TA7508AP	X	1" F. NPT	1"
TA7514AP		2" F. NPT	2"
TA7518AP		3" F. NPT	3 ¹ / ₈ "
TA7518FP		3" 300# ANSI R.F. Flange	

Threaded Internal Valves For Bobtail Delivery Trucks, Transports and Stationary Storage Tanks A3213D475

Application

Designed primarily for use with LP-Gas and anhydrous ammonia for liquid withdrawal; vapor transfer or vapor equalization of bobtail delivery trucks, transports, stationary storage tanks, and in-line installations. The valve may be operated manually by cable or pneumatically.



COMING SOON



A3213D475

Ordering Information

Part Number	Inlet Connection	Outlet Connection	LPG Closing Flow		Accessories			
			Half	Full	Pneumatic Actuator	Rotary Actuator	Electric Actuator	Thermal Latch
A3213D475	3" M. NPT	3" F. NPT	475	385	A3213PA	A3213RA A3213OA	A3213EA	A3213TL

First Stage Regulator LV4403TR66

Application

Provides accurate first stage regulation in two-stage bulk tank systems. Reduce tank pressure to an intermediate pressure of 5 to 10 PSIG (0.34 to 0.69 BARG). Also used to supply high pressure burners for applications like industrial furnaces or boilers. Also incorporated in multiple cylinder installations.



LV4403TR66

Ordering Information

Part Number	Inlet Connection	Outlet Connection	Orifice Size	Factory Delivery Pressure	Adjustment Range	Bonnet Vent Position	Vapor Capacity BTU/hr Propane*
LV4403TR66	3/4" F. NPT	3/4" F. NPT	1/4" (6.25mm)	10 PSIG @ 50 PSIG Inlet (0.69 Bar @ 3.44 Bar inlet)	5-10 PSIG (0.34 - 0.69 Bar)	Over Outlet	2,500,000 BTU/hr (53 KG/hr)

LPV-Series Ball Valve with Presto-Tap® fitting

Application

Gas ball valve fitted with LDS2000RV Presto-Tap® fitting in the outlet tap. Eliminates need for test tee and labor for installation. Provides quick access to obtain pressure readings and perform leak tests without breaking into the system by utilizing the proper Presto-Tap® gauge for the selected testing location.



LPV-6

LPV-4

Ordering Information

Part Number	Inlet	Outlet	Reduces Emissions
LPV-4	1/2" F. NPT	1/2" M. NPT	Up to 90%
LPV-6	3/4" F. NPT	3/4" M. NPT	

Presto-Tap® PTSU-KIT

Application

Presto-tap kit with new 12" stainless hose & gauges for obtaining pressure readings and leak testing at tank pressure, first stage, two pound and low pressure (0-20 OZ) locations.

Features

- New 12" Stainless Steel Flex Hose w/ Gauge Bleeder & Straight Quick Adapters
- 300 lb psi/Ambient Temperature gauge w/ Straight Quick Adapter & Cap
- 30 lb psi gauge w/ Straight Quick Adapter & Cap
- 5 lb gauge w/ Straight Quick Adapter & Cap
- 0-20 OZ (0-35" wc) Gauge w/ Straight Quick Adapter & Cap
- All gauges equipped with magnet and protective cover
- 12" Tool Bag W/ Outer Pockets & Inner Pockets



PTSU-KIT

Ordering Information

Part Number	Description
PTSU-KIT	Universal Service Tech Diagnostic & Leak Test Kit for All Stages of the Gas System

PTSFLEX-KITP

Application

Presto-tap 12" Flexible Stainless Steel Hose Assembly w/ Bleeder & 1/4" Quick Connect Adapter for Presto-Tap Gauges.



PTSFLEX-KITP



Ordering Information

Part Number	Description
PTSFLEX-KITP	12" Flexible Stainless Steel Hose Assembly w/ Bleeder & 1/4" Quick Connect Adapter

Presto-Tap 90° Quick Connect Fitting RVQA-90F

Application

This 90° quick connect fitting is designed to be fitted on the end of your Presto-Tap hose assembly with straight connectors. This fitting eliminates the need for 2 separate hose assemblies when connecting to the presto-tap on RegO Multivalve® assemblies.



RVQA-90F

Ordering Information

Part Number	Inlet Connection	Outlet Connection
RVQA-90F	1/4" M. Flare	1/4" F. Flare



PART OF OPW | a **DOVER** company

RegO® Presto-Link – Fast, accurate testing

The Presto-Link Bluetooth device communicates with the RegO app to allow for pressure readings to be obtained on your mobile device. The result is a safe, secure, efficient and cost-effective way for on-site service personnel to obtain pressure readings to assist with fine tuning and troubleshooting a propane vapor system.

Presto-Link Features & Benefits:

- Bluetooth connection thru an Android or Apple Device
- Lightweight & compact design
- Battery percentage indicator
- 1.5 times overpressure protection
- Bluetooth connection up to 100-foot range allows for troubleshooting and adjustment to systems while recording the pressure
- Visual indicator for pressure settings; Red casing indicates a high-pressure device and black casing indicates a low-pressure device



PTLINKH-KIT



PTLINKL-KGA



Scan here to download the latest Regulator Presto-Tap Catalog



Scan here to learn more about the RegO App

Convenient and easy to use...
Download it for FREE!



Presto-link® Bluetooth Gauge Kit w/ Bleeder Valve, 36" Flexible Hose & Quick Adapter PT36KIT Series Patent Pending

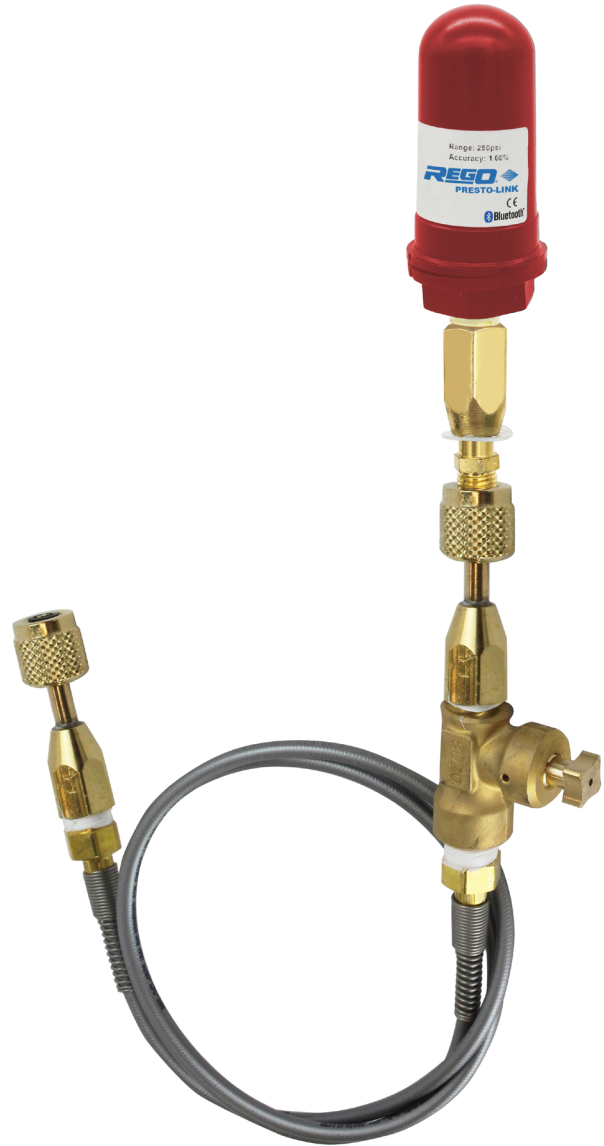


Application

Presto-link® bluetooth gauge solution provides a convenient means to obtain pressure readings thru the RegO App on your mobile device. This kit includes a Presto-link® Bluetooth Gauge and quick adapter assembly, 36" Flexible hose assembly fitted with bleeder and quick adapter assembly for connection to the Presto-Tap Fittings.

Features

- Presto-link® Bluetooth Gauge With Quick Connect Adapter
- 36" Universal Flex Hose w/Gauge Bleeder & Quick Connect Adapters Assembly
- Brilliant Red case coloring indicates 0-250 PSI high pressure device
- Black case coloring indicates 0-50" w.c. low pressure device
- Packaged in a padded case



PT36KIT Series



Ordering Information

Part Number	Bluetooth Presto-Link Gauge Included		Bleeder	Hose Length
	PTLINKH 0-250 PSIG Reading	PTLINKL 0-50" wc		
PTLINKH-36KIT	X	-	Yes	36"
PTLINKL-36KIT	-	X		
PTLINKC-36KIT	X	X		

Presto-link® Bluetooth Gauge Kit w/ Bleeder & Quick Adapter

PTKIT Series Patent Pending

Application

Presto-link® bluetooth gauge solution provides a convenient means to obtain pressure readings thru the RegO App on your mobile device. This kit includes a Presto-link® Bluetooth Gauge, bleeder and quick adapter assembly for connection to the Presto-Tap Fittings.

Features

- Presto-link® Bluetooth Gauge With Gauge Bleeder & Quick Connect Adapter Assembly
- Brilliant Red case coloring indicates 0-250 PSI high pressure device
- Black case coloring indicates 0-50" w.c. low pressure device
- Packaged in a Padded Case



PTKIT Series



Ordering Information

Part Number	Bluetooth Presto-Link Gauge Included		Quick Adapter	Bleeder
	PTLINKH 0-250 PSIG Reading	PTLINKL 0-50" wc		
PTLINKH-KIT	X	-	90°	Yes
PTLINKL-KIT	-	X		
PTLINKC-KIT	X	X		

Presto-link® Bluetooth Gauge Kit w/ Quick Adapter

PTKGA Series Patent Pending

Application

Presto-link® bluetooth gauge solution provides a convenient means to obtain pressure readings thru the RegO App on your mobile device. This kit includes a Presto-link® Bluetooth Gauge and quick adapter assembly for connection to the Presto-Tap Fittings.

Features

- Presto-link® Bluetooth Gauge With Quick Connect Adapter
- Brilliant Red case coloring indicates 0-250 PSI high pressure device
- Black case coloring indicates 0-50" w.c. low pressure device
- Packaged in a padded case



PTKGA Series



Ordering Information

Part Number	Bluetooth Presto-Link Gauge Included		Quick Adapter
	PTLINKH 0-250 PSIG Reading	PTLINKL 0-50" wc	
PTLINKH-KGA	X	-	Straight
PTLINKL-KGA	-	X	
PTLINKC-KGA	X	X	

Presto-Tap® LDS2000/RV Fitting

Application

The patented, UL Listed Presto-Tap® LDS2000/RV is designed to obtain pressure readings and perform leak test without breaking into the system by utilizing the proper Presto-Tap® gauge for the selected testing location. Legal installed at any point in the system.

Features

- Brass 1/8" MNPT X 1/4" Flare Housing with #54 Orifice and Everseal
- Valve Core with Viton Seat
- UV Resistant Cap with Nitrile "O" Ring
- UL Label

Materials

Valve Body..... Brass
 Core..... Stainless Steel w/Nylon Seal & Viton seat
 Cap..... UV Resistant Plastic w/Nitril "O" Ring
 Label..... UV resistant Plastic w/Marking



LDS2000RV

Ordering Information - Tank Pressure Application (UL Listed)

Part Number	Thread	Core	Body Wrench Flat	Cap Material	#54 Orifice	Application
LDS2000RV	1/8" M. NPT	Viton	7/16"	UV Resistant Plastic	YES	Tank Pressure

Presto-Tap® RVL & PT-AF14 Fitting

Application

The RVL & PT-AF14 is designed to obtain pressure readings and perform leak test without breaking into the system by utilizing the proper Presto-Tap® gauge installed at the regulator gauge port location.



Ordering Information - Low Pressure Application (Non UL Listed)

Part Number	Thread	Core	Body Wrench Flat	Cap Material	#54 Orifice	Application
RVL	1/8" M. NPT	Viton	7/16"	Brass	NO	Regulator Installation
PT-AF14	1/4" M. NPT					



RVL

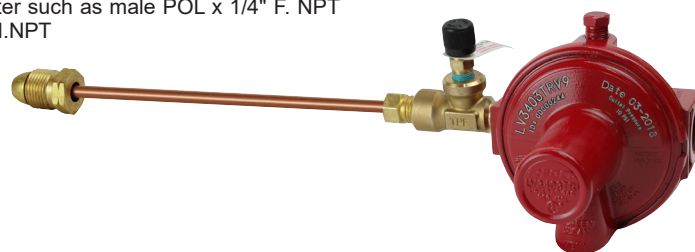
Patented Tank Pressure Fitting TPF Series

Application

Low cost, permanently installed fitting between tank service valve and first stage regulator providing leak test capability without the use of tools. Eliminates the need to discard pigtail to access tank pressure.

Features

- Easily installed with an adapter such as male POL x 1/4" F. NPT and 1/4" female POL x 1/4" M.NPT



TPF

Ordering Information

Tank Pressure Fitting			
Part Number	Inlet	Outlet	Reduces Emissions
TPF	1/4" F. NPT	1/4" M. NPT	Up to 90%

High Capacity Liquid withdrawal Valves for NH3 A8012E

Application

The A8012E is designed especially for use as a high capacity liquid withdrawal valve on anhydrous ammonia nurse tanks or risers.

This valve incorporates an integral excess flow valve; when the valve is in operation the handwheel must be completely open and back-seated to allow the excess flow valve to function properly as explained in the excess flow section of our L-500 and L-102 catalogs.



A8012E

Ordering Information

Part Number	Inlet Connection	Outlet Connection	Approximate Closing Flow GPM	Accessories for NH3 Use	
				Hydrostatic Relief Valve	Vent Valve
A8012E	1½" M.NPT	1¼" F. NPT	60 GPM NH3*	SS8001J	TSS3169

* When installed in a horizontally flowing system.

Extended Double-Check Filler Valves E7579

Application

The E7579 is a RegO manual double-back check filler valve that incorporates two resilient upper checks. It also provides an additional height when connecting your hose end valve without the need for a filler extension. The additional height of this filler valve reduces the chance of exposure to dirt, debris, etc. that typically occur in underground tank applications.



E7579C



EG167

Ordering Information

Part Number	For use on:	F. ACME Connection	Wrench Hex Flats
E7579-KIT	L7579	1¾"	1⅞"
	L6579		

Filler Valve Extension Retrofit Kit for L7579 - E7579-KIT

Application

The E7579-KIT Extension Retrofit Kit is designed to extend the filler valve section upward on the L7579, when it is necessary to allow for an extended filler connection.



E7579-KIT

Ordering Information

Part Number	For use on:	F. ACME Connection	Wrench Hex Flats
E7579-KIT	L7579	1¾"	1⅞"
	L6579		

External Hydrostatic Relief Valves

3125, 3127, 3129, SS8001, SS8002, SS8021 and SS8022 Series

Application

Designed especially for the protection of piping and shut-off valves where there is a possibility of trapping liquid LP-Gas or anhydrous ammonia. They may be installed in pipelines and hoses located between shut-off valves or in the side boss of RegO shut-off valves.



SS8022

Ordering Information

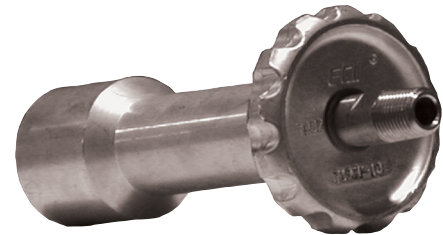
Part Number	Start To Discharge Setting PSIG	Valve Body Material	Container Connection M. NPT	Height (Approx.)	Wrench Hex Section	Accessories	
						Protective Cap	Pipeway Adapter or Threads
SS8001K**	375	Stainless Steel	1/4"	7/8"	11/16"	8001-55	-
SS8002K**			1/2"		7/8"	8022-54	-
SS8021K**			1/4"	1 1/8"	11/16"	8001-55	1/4" NPSM Thrds
SS8022K**			1/2"		7/8"	8022-54	3/8" NPT Thrds

Hose End Adapters for DOT Cylinder Filling 7193D-10 and 7193U-10

Application

Designed to provide quick and easy filling of DOT cylinders with POL or Type I connections. This adapter may be used with hydraulic and electric automatic systems or with manual systems in conjunction with a RegO 7901TB Quick Acting Shut-Off Valve.

These filling connectors have an extended connection on the handwheel, which makes it possible to connect the loading hose to valves on cylinders with fixed collars. The handwheel is well outside the collar for easy operation.



7193U-10S

Ordering Information

Part Number	Applications	Inlet Connection	Outlet Connection	Materials	
				"A" Nipple	"B" Handwheel Adapter
7193U-10S	Filling of DOT Cylinders with Type I Connections		Type 1 Connection (1 5/16" F. ACME)	Stainless Steel	Brass

High Pressure First Stage Regulators LV4403TR9V9 & LV4403TR96V9

Application

Provides accurate first stage regulation in two-stage bulk tank systems. Reduce tank pressure to an intermediate pressure of 5 to 10 PSIG (0.34 to 0.69 BARG). Also used to supply high pressure burners for applications like industrial furnaces or boilers. Also incorporated in multiple cylinder installations.



LV4403TR9V9

Ordering Information

Part Number	Inlet Connection	Outlet Connection	Orifice Size	Factory Delivery Pressure	Adjustment Range	Bonnet Vent Position	Vapor Capacity BTU/hr Propane*
LV4403TR9V9	F. POL	1/2" F. NPT	1/4" (6.25mm)	10 PSIG @ 50 PSIG Inlet (0.69 Bar @ 3.44 Bar inlet)	5-10 PSIG (0.34 - 0.69 Bar)	9 o'clock	2,500,000 BTU/hr (53 KG/hr)
LV4403TR96V9							

*Maximum flow based on inlet pressure 20 PSIG(1.4 bar) higher than the regulator setting and delivery pressure 20% lower than the regulator setting and delivery pressure 20% lower than the setting.



PART OF OPW | a **DOVER** company

Reliable Dependable Regulators

Made in the USA

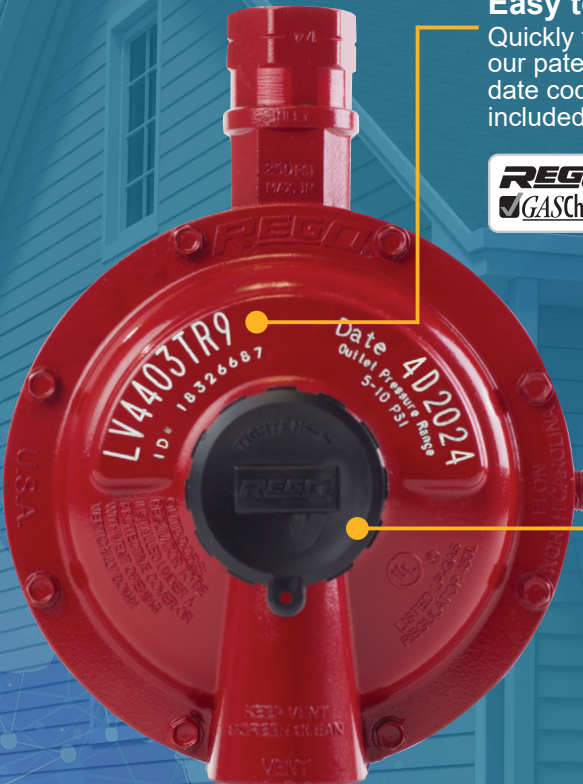
Easy to Find

Quickly find the information you need with our patented laser-engraved part number, date code and serial number that matches included GASCheck™ Labels.

	Model: LV4403TR9	Internal Relief: Yes	UL Listed: Yes
	System Stage (type): 1st		ID #: 18326687
	Spring Range 5-10 PSI		Mfg Date: 11-2022 Made in: USA



Scan here to download the latest Regulator Presto-Tap Catalog

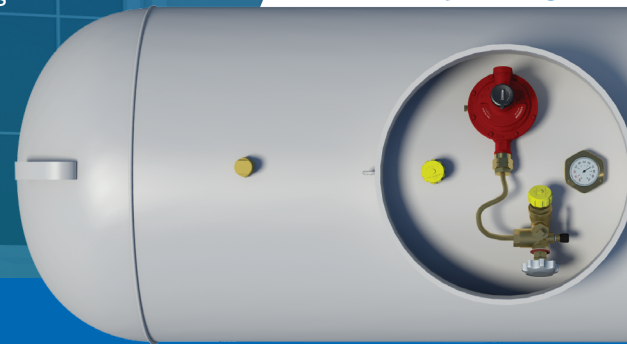


No Special Tools Required

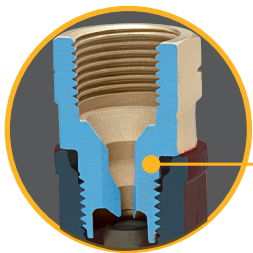
Our pressure plug ports conform to a standard 7/16" wrench.

Easier to Secure

Our bonnet cap features a loop for a lanyard to help keep it secured, making it more tamper resistant.

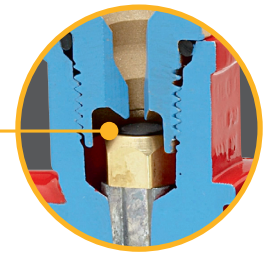


When you specify RegO, you get 100% tested products backed by our industry-leading 10-year warranty and our global support network. Our products are designed for fast and easy maintenance, to save you time and money—and give you peace of mind.



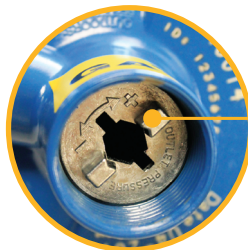
Easy to Service

The nozzle orifice is easily replaceable and precision machined to prevent scoring of the seat disc.



Reliable Service

Resilient seat disc construction gives sure closing at lock up pressure. Straight line seat disc to nozzle operation provides even seat disc wear and positive lock up.



Easy to Adjust

We redesigned our adjusting screw to be easily turned by hand.

