

2" Flanged by Socket Weld Close Elbow

Application

2" Socket weld 4 bolt 90-degree close elbow designed for connection between piping system where a close elbow is desired. These elbows are designed to be used in conjunction with RegO flanged adapters, excess flow and back check valves.

COMING SOON



SSA7513SFGE

REGO
10
YEAR
WARRANTY

Ordering Information

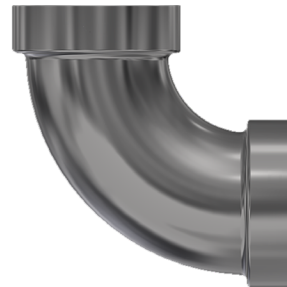
Part Number	Inlet Connection	Outlet Connection
SSA7513SFGE	2" 4 Bolt Type A Groove w/ Bolts	2" Socket Weld

2" Socket Weld Elbow Sweep

Application

Designed to provide connection between piping, Sweep elbows help to reduce fluid friction and pressure loss, allowing for a more efficient flow.

COMING SOON



SSA7513SE

REGO
10
YEAR
WARRANTY

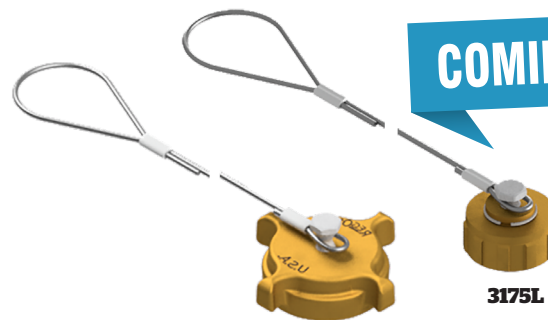
Ordering Information

Part Number	Inlet Connection	Outlet Connection
SSA7513SE	2" Socket Weld	2" Socket Weld

ACME Caps with Adjustable Cable 3175L and 3184-91

Application

Female ACME Cap with adjustable cable.



COMING SOON

3184-91

3175L

REGO
10
YEAR
WARRANTY

Ordering Information

Cap With Chain & Ring				
Part Number	Ring Fits Pipe Size Up To:	Cap Only Part Number	Material	Thread Connection
3175L	Adjustable Cable	-	Brass	1 1/4" F. ACME
3184-91				2 1/4" F. ACME