

Stainless Steel 3" Double Flange Internal Valve SSA3218FD

Application

Stainless steel internal valve series for use with LP-Gas or NH₃ on Bobtails, Transports, Storage Plants, or Nurse tanks. Can be actuated manually, by remote cable, or by various actuator types (sold separately).

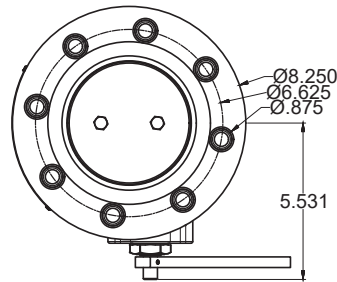
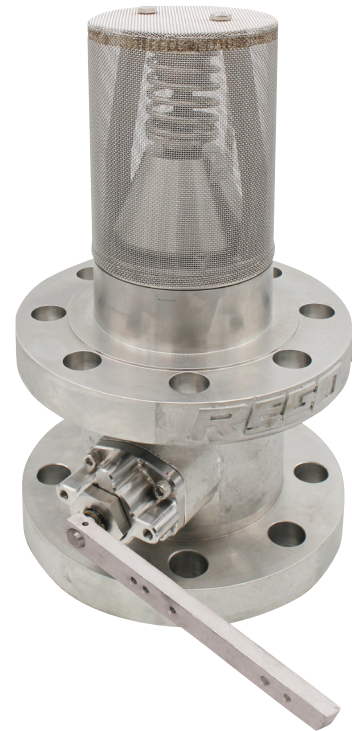


Features & Benefits

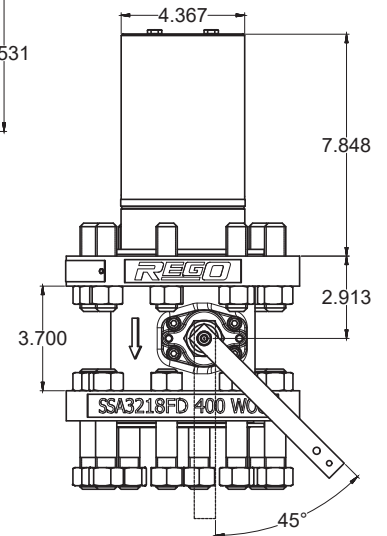
- Roller type opening provides decades of dependable, low maintenance service
- Stainless steel bodies increase service life even in the harshest of conditions; does not require painting but can be if desired
- Replacement bonnets available (sold separately)
- High flow design prevents pump cavitation and efficiency loss, saving time and money
- Built-in excess flow valve and shear studs meet or exceed industry standards to ensure safety
- Temperature range of -40°F to +165°F (-40°C to +73°C)
MAWP: 400 PSIG(27 Bar)

Materials

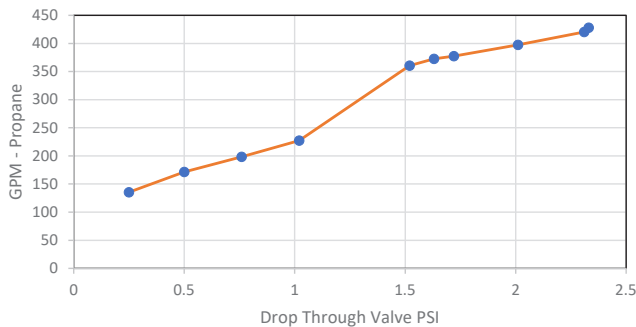
Body	Stainless Steel
Stem	Stainless Steel
Seat	Stainless Steel
Seat Disc	Nitrile
Springs	Stainless Steel
Stem Seals	PTFE



SSA3218FD



SSA3218FD Series



Ordering Information

Part Number	Inlet Connection	Outlet Connection	Closing Flow GPM		Accessories	
			LP-Gas	NH ₃	Pneumatic Actuator	Rotary Actuator
SSA3218FD160	3" 300# ANSI RF Modified Flange*	3" 300# ANSI RF Flange	160	145	A3218PA	A3218OA A3218RA
SSA3218FD210			210	190		
SSA3218FD260			260	236		
SSA3218FD410			410	372		
SSA3218FD510			510	459		

* Valve supplied with 16 nuts and 8 studs for mounting.

**Modified bore=4% diameter with 5/4" diameter raised face.

Stainless Steel 3" Single Flange Internal Valve SSA3218F

Application

Stainless steel internal valve series for use with LP-Gas or NH3 on Bobtails, Transports, Storage Plants, or Nurse tanks. Can be actuated manually, by remote cable, or by various actuator types (sold separately).



Features & Benefits

- Roller type opening provides decades of dependable, low maintenance service
- Stainless steel bodies increase service life even in the harshest of conditions; does not require painting but can be if desired
- Packing can be easily serviced as piping does not have to be disconnected to remove and repack stem
- High flow design prevents pump cavitation and efficiency loss, saving time and money
- Built-in excess flow valve and shear studs meet or exceed industry standards to ensure safety
- Temperature range of -40°F to +165°F (-40°C to +73°C)
MAWP: 400 PSIG(27 Bar)

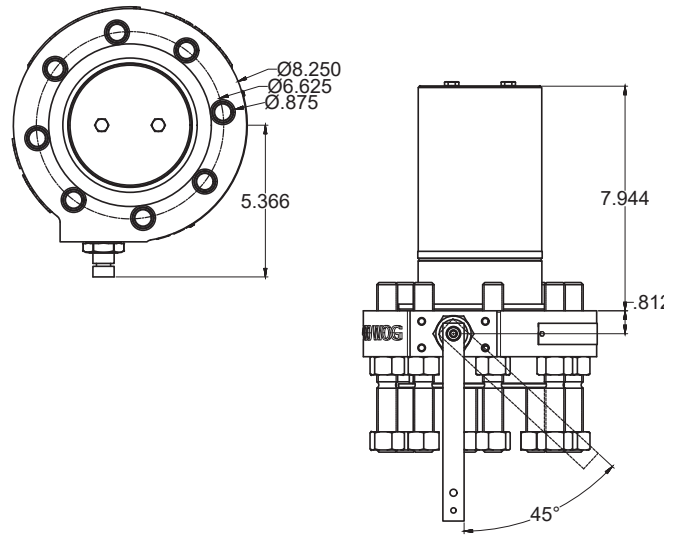
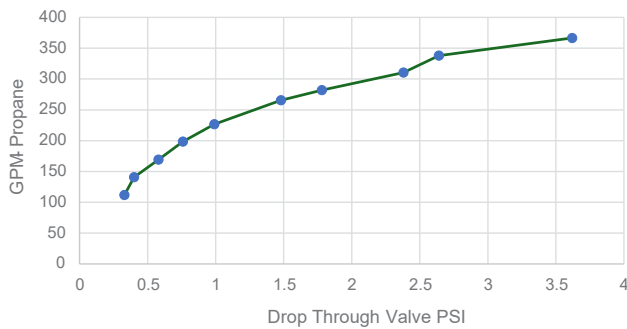
Materials

Body	Stainless Steel
Stem	Stainless Steel
Seat	Stainless Steel
Seat Disc	Nitrile
Springs	Stainless Steel
Stem Seals	PTFE



SSA3218F

SSA3218F Series



Ordering Information

Part Number	Inlet Connection	Outlet Connection	Closing Flow GPM		Accessories	
			LP-Gas	NH3	Pnuematic Actuator	Rotary Actuator
SSA3218F160	3" 300# ANSI RF Modified Flange*	3" 300# ANSI RF Flange	160	145	A3218FPA	A3218LOA A3218FRA
SSA3218F210			210	190		
SSA3218F260			260	236		
SSA3218F410			410	372		
SSA3218F510			510	459		

* Valve supplied with 16 nuts and 8 studs for mounting

Threaded Internal Valves For Bobtail Delivery Trucks, Transports and Stationary Storage Tanks SSA3213F Series

Application

Designed primarily for use with LP-Gas and anhydrous ammonia for liquid withdrawal; vapor transfer or vapor equalization of bobtail delivery trucks, transports, stationary storage tanks, and in-line installations. The valve may be operated manually by cable or pneumatically.

Features

- May be installed in full and half couplings.
- Nylon bearing supported operating shaft provides smooth, easy operation.
- Simple operating lever facilitates easy adaptation of all cable controls.
- Midway stem position allows for quicker pressure equalization.
- Cannot trap liquid between the outlet of the valve and a shutoff valve downstream (no hydrostatic relief valve required; swing check will open and allow backflow at minimal differential pressure).
- All critical operating components are located in the valve body inside the container coupling for maximum protection against physical damage.
- Built-in excess flow valve.
- Return spring returns the valve to the closed position when the handle is released.
- Specify RegO Internal Valves on your next new tank body or when your tank is rebuilt.
- A3213FPA pneumatic actuator provides a convenient means of opening and closing the valve from a remote location, using either air or nitrogen for A3213F service valves.
- Temperature range of -40°F to +165°F (-40°C to +73°C)
- MAWP: 400 PSIG(27 Bar)



SSA3213F Series

COMING SOON

Materials

Body Stainless Steel
 Operating Lever..... Cadmium Plated Steel
 Stem Stainless Steel
 Springs Stainless Steel
 Seat Disc Resilient Synthetic Rubber
 Shaft Bearing..... Nylon



Ordering Information

Part Number	Inlet Connection	Outlet Connection	Closing Flow Half Coupling (GPM)		Closing Flow Full Coupling (GPM)		Vapor Closing Flow (SCFH)		Accessories		
			LPG	NH ₃	LPG	NH ₃	25 PSIG Inlet	100 PSIG Inlet	Pneumatic Actuator	Rotary Actuator	Thermal Latch
SSA3213F150	3" M. NPT	3" 300# ANSI R.F. Flange	150	135	125	113	26,900	45,900	A3213FPA	A3213FOA	A3213FTL
SSA3213F200			200	180	160	144	32,300	55,100			
SSA3213F300			300	270	250	225	50,500	86,500			
SSA3213F400			400	360	325	293	71,400	121,300			
SSA3213F475			475	427	385	347	NA	NA			

1¼" Threaded Internal Valve for Small Capacity Pumping Systems and Bobtail Vapor Equalization SSA3209F Series

Application

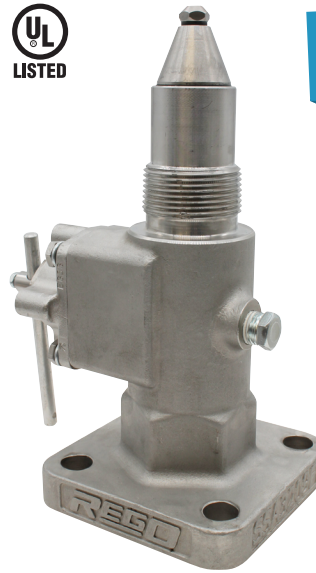
Designed primarily for use with LP-Gas and anhydrous ammonia as a main valve on small capacity pumping systems, NH3 nurse tanks and in-line installations. It may also be installed in the vapor equalizing opening on bobtail delivery trucks. Installation is quick and easy, and it fits in both full and half couplings, as well as, in-line applications. The valve may be actuated manually by hand or cable.

Features

- Valve is compact, with one piece body construction.
- Spring loaded V-packing with heavy duty wiper ring on operating shaft for dependable leak-free construction.
- Nylon bearing supported operating shaft provides smooth, easy operation.
- Simple operating lever allows for easy connection of cable controls.
- Built in excess flow valve
- Return spring forces the valve to the closed position when the lever is released.
- All critical operating components are located in the valve body and inside the container coupling for maximum protection against damage.
- Midway stem position allows for quick pressure equalization.
- Cannot trap liquid between the outlet of the valve and a shutoff valve downstream (no hydrostatic relief valve required; swing check will open and allow backflow at minimal differential pressure).
- Equipped with 212° F, UL listed fuse link for thermal protection.
- Temperature range of -40°F to +165°F (-40°C to +73°C)
- MAWP: 400 PSIG(27 Bar)

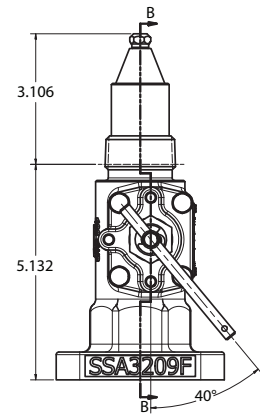
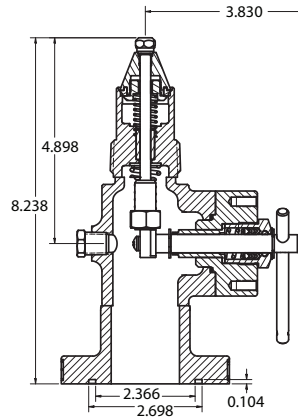
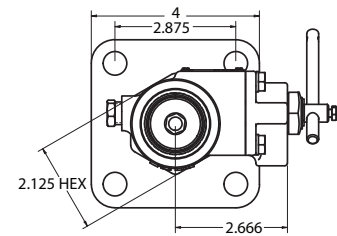
Materials

Body	Stainless Steel
Operating Lever	Cadmium Plated Carbon Steel
Stem	Stainless Steel
Springs	Stainless Steel
Seat Disc	Resilient Synthetic Rubber
Shaft Bearing	Nylon



COMING SOON

SSA3209F



Flange Adapters (Packaged with O-ring & Bolts)

Part Number	Inlet Connection	Outlet Connection
SSA3209FAS	1¼" 4 Bolt Type B Flat	1¼" Socket Weld
SSA3209FA	Face w/ Bolts & O-Ring	1¼" F. NPT

Ordering Information

Part Number	Inlet Connection	Outlet Connection	Closing Flow GPM		LP-Gas Vapor Capacity** (SCFH/Propane)		Accessories		
			LP-Gas	NH3	25 PSIG	100 PSIG	Thermal Latch	Pneumatic Actuators	Rotary Actuator
SSA3209F050	1¼" M. NPT	1 ¼" 4 Bolt Type A Groove	50	45	13,300	22,900	A3209FTL	A3209FPA A3209FPAF	A3209OA
SSA3209F080			80	72	15,700	26,700			