

## 2" Flanged by Butt Weld Tee

### Application

Flanged Swept tee available in both 2" butt weld pipe configuration. The swept design minimizing pressure drop thru the outlet of the piping resulting in higher flow rates and greater pump efficiency.



SSA7513TFGB

COMING SOON

REGO  
**10**  
YEAR  
WARRANTY

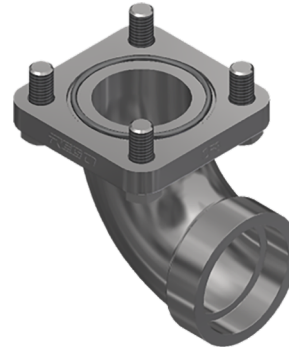
### Ordering Information

Part Number	Flange Inlet "A"	Outlet "B"	Outlet "C"
SSA7513TFGB	2" 4 Bolt Type A Groove w/ Bolts	2" Butt Weld	2" Butt Weld

## 2" Flanged by 2" Socket Weld Elbow SSA7513FAE

### Application

Swept elbow designed for bobtail pump discharge. The swept design minimizing pressure drop thru the outlet of the pump resulting in higher flow rates and greater pump efficiency.



SSA7513FAE

COMING SOON

REGO  
**10**  
YEAR  
WARRANTY

### Ordering Information

Part Number	Inlet Connection	Outlet Connection
SSA7513FAE	2" 4 Bolt Type A Groove w/ Bolts	2" Socket Weld

## 2" Flanged by Socket Weld Close Elbow

### Application

2" Socket weld 4 bolt 90-degree close elbow designed for connection between piping system where a close elbow is desired. These elbows are designed to be used in conjunction with RegO flanged adapters, excess flow and back check valves.

COMING SOON



SSA7513SFGE

REGO  
**10**  
YEAR  
WARRANTY

### Ordering Information

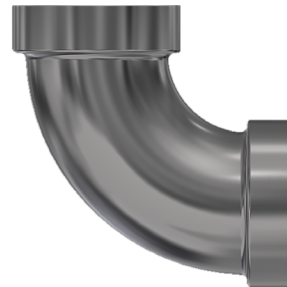
Part Number	Inlet Connection	Outlet Connection
SSA7513SFGE	2" 4 Bolt Type A Groove w/ Bolts	2" Socket Weld

## 2" Socket Weld Elbow Sweep

### Application

Designed to provide connection between piping, Sweep elbows help to reduce fluid friction and pressure loss, allowing for a more efficient flow.

COMING SOON



SSA7513SE

REGO  
**10**  
YEAR  
WARRANTY

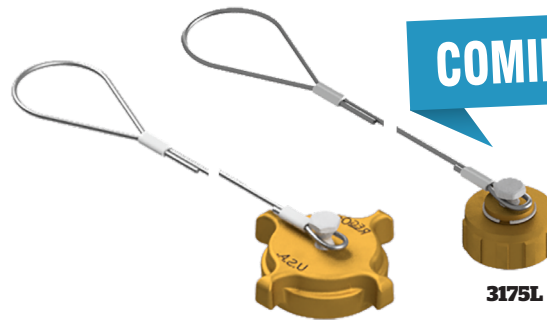
### Ordering Information

Part Number	Inlet Connection	Outlet Connection
SSA7513SE	2" Socket Weld	2" Socket Weld

## ACME Caps with Adjustable Cable 3175L and 3184-91

### Application

Female ACME Cap with adjustable cable.



3184-91

3175L

COMING SOON

REGO  
**10**  
YEAR  
WARRANTY

### Ordering Information

Cap With Chain & Ring				
Part Number	Ring Fits Pipe Size Up To:	Cap Only Part Number	Material	Thread Connection
3175L	Adjustable Cable	-	Brass	1 1/4" F. ACME
3184-91				2 1/4" F. ACME