

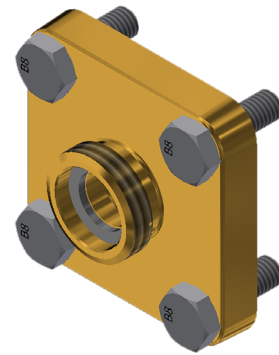
# Stainless Steel & Brass Flange Adapters

## Application

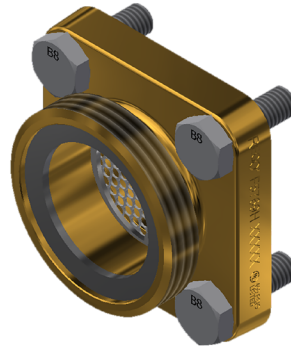
Flange Unions provide a convenient method for connecting pipe and installing valves with mating connection.

## Features

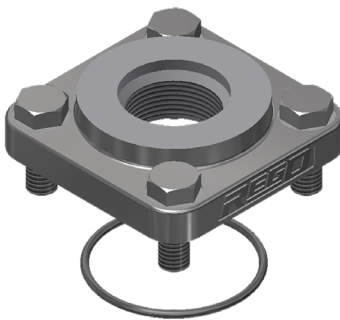
- Heavy-duty Stainless Steel construction for long service life
- Connection types available: NPT, Socket Weld
- Temperature range of -40°F to +165°F. (-40°C to +73°C)
- MAWP: 400 PSIG(27 Bar)



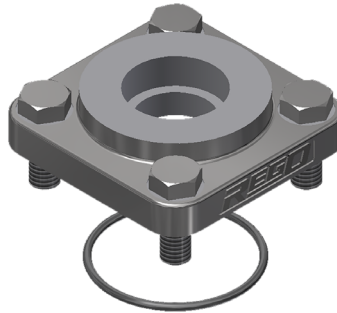
**F5765F**



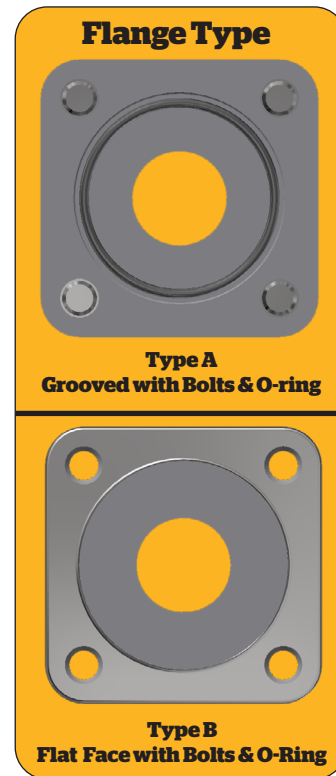
**F5769H**



**SSA3209FASG**



**SSA3209FAG**



## 1 1/4" Flange Adapters Ordering Information

Part Number	Material	Inlet Connection	Outlet Connection
<b>SSA3209FASG</b>	Stainless Steel	1 1/4" 4 Bolt Type A Groove w/ Bolts & O-Ring	1 1/4" Socket Weld
<b>SSA3209FAG</b>			1 1/4" F. NPT
<b>F5765F</b>	Brass		1 1/4" M. Acme
<b>SSA3209FAS</b>	Stainless Steel	1 1/4" 4 Bolt Type B Flat Face w/ Bolts & O-Ring	1 1/4" Socket Weld
<b>SSA3209FA</b>			1 1/4" F. NPT

## 2" Flange Adapters Ordering Information

Part Number	Material	Inlet Connection	Outlet Connection
<b>SSA7513FASG</b>	Stainless Steel	2" 4 Bolt Type A Groove w/ Bolts & O-Ring	2" Socket Weld
<b>SSA7513FAG</b>			2" F. NPT
<b>F5769H</b>	Brass		3 1/4" M. Acme
<b>SSA7513FAS</b>	Stainless Steel	2" 4 Bolt Type B Flat Face w/ Bolts & O-Ring	2" Socket Weld
<b>SSA7513FA</b>			2" F. NPT