

Sight Flow Indicators for Bobtails SSA7794F

Application

Designed to promote maximum pump efficiency, these indicators enable bobtail operators to visually inspect liquid flow conditions. With glass on both sides of the indicator, flow can be observed from either side, even under some poor light conditions. The integral swing check also serves as a back-check valve to prevent reverse flow and product loss if the hose fails in a loading operation. By installing an indicator on the upstream side of the pump, suction conditions can be observed, and the pump speed adjusted to obtain the maximum possible flow rate without cavitation.

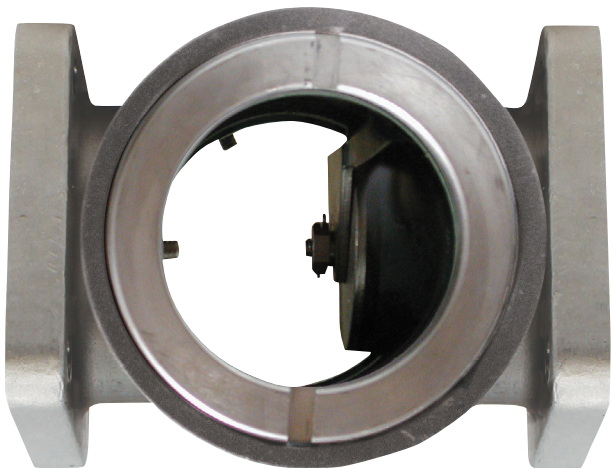
Features

- Heavy-duty Stainless-Steel construction ensures long, trouble-free operation with design working pressure of 400 PSIG.
- 4 bolt universal flange inlet/outlet connection
- Glass is polished, ground and tempered after fabrication for maximum strength up to 2,500 PSIG.
- Set screws minimize loosening of glass retainer rings.
- O-ring glass seals provide for leak-tight operation.
- 2" M. NPT x 4 Bolt Type A Flange
- All models can be used with LP Gas or NH3
- Rated 400 WOG for LPG & NH3 applications

Materials

BodyStainless Steel
 Swing Check..... Stainless Steel
 Check Seat Disc..... Resilient Synthetic Rubber
 Glass Polished, Ground, Tempered and tested to 2,500 PSIG

COMING SOON



SSA7794F



2" Flange Adapters (Packaged with O-ring & Bolts)

Part Number	Inlet Connection	Outlet Connection
SSA7513FASG	2" 4 Bolt Type A Groove w/ Bolts	2" Socket Weld
SSA7513FAG		2" F. NPT
F5769H - Brass		3/4" M. Acme

Ordering Information

Part Number	A Inlet/Outlet Connections	B Length
SSA7794	2" 4 Bolt Type B Flat Face	5 3/4"